

Installation and Operating Instruction for B.E.G. - Slave device Indoor 180-S

1. Product information

- Slave device
- For extending the detection area of a Master device
- Compatible with all Master devices except: PD4-M-2C-DS-FC, 11-48V devices, PD9-M-SDB, PD4-M-DAA4G

2. Operation

The slave device sends a trigger pulse to the master device when motion is detected.

3. Safety information

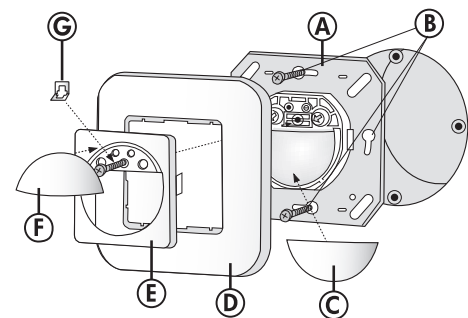
Work on the mains supply may only be carried out by qualified professionals or by instructed persons under the direction and supervision of qualified skilled electrical personnel in accordance with electrotechnical regulations!

Disconnect supply before installing!

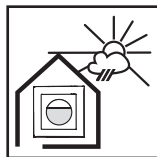
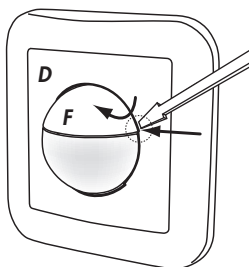
The device is not suited for safe disconnection of the mains supply!

Device is not suitable for switching loads!

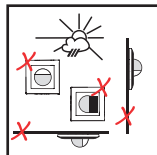
4. Installation



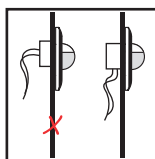
- (A) Sensor insert
- (B) Mounting screws
- (C) Blinds for the exclusion of interference sources
- (D) Frame
- (E) Center plate
- (F) Cover cap (the cover cap can be removed as illustrated below unless lock (G) is mounted)
- (G) Lock for cover cap (F) against unwanted removal



Install the device in a protected position, for wall mounting at a height of 1.10 to 2.20 m.



Inappropriate installation or use will interfere with trouble-free operation or lead to damage of the device.



Suitable for installation in a 60 mm patch box. The cable inlet should be vertical.

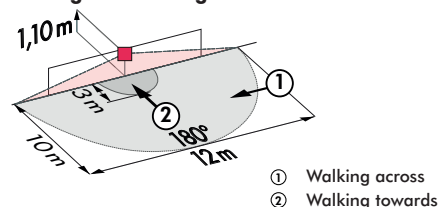
5. Putting into operation

The product enters an initial 60-second self-test cycle, when the supply is first connected. During this time the device does not respond to movement.

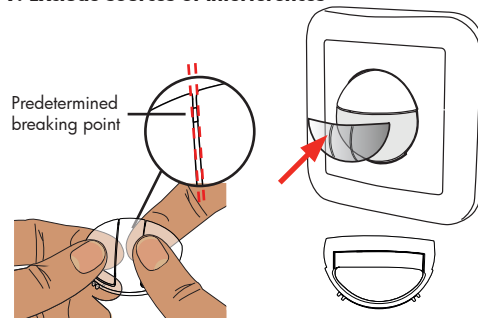
Pulse spacing Indoor 180-S

2 or 9 seconds can be set for the pause between 2 pulses sent to the master. The setting can be made with activated (●) 2 or 9 seconds can be set for the pause between 2 pulses sent to the master. The setting can be made with activated (○) LED indicator. For devices with a separate slave input, 2 sec. can be set.

6. Range of Coverage



7. Exclude sources of interferences



In case the detection area of the Indoor 180-S is too large or areas are being covered that should not be monitored, the range can be reduced or limited through use of the enclosed blinds. (see pt.4).

8. Article / Part nr. / Accessory

Article	Part nr.
Indoor 180-S, covering included	92135
Indoor 180-S, covering not included	92660

Accessory:

Covering IP20	pure white, mat	92630
	RAL9010	
Covering IP20	traffic white, mat	92631
	RAL9016	
Covering IP20	oyster white, mat	92632
	RAL1013	
Covering IP20	steel optik, mat	92633
	RAL9006	
Covering IP20	anthracite, mat	92634
	RAL7021	
Covering IP54	pure white, mat	92139
	RAL9010	
SM-Socket for Indoor	pure white, brilliant	92141
	RAL9010	
Center plate	pure white, brilliant	39222
55x55mm	RAL9010	
Center plate	traffic white, brilliant	39223
55x55mm	RAL9016	
Center plate	pure white, brilliant	35126
56x56mm (angled corners)	RAL9010	
Center plate	pure white, brilliant	35127
56x56mm (rounded corners)	RAL9010	
Center plate	traffic white, mat	38947
45x45mm	RAL9016	
Center plate	cream white, mat	39076
45x45mm	RAL9001	
Blinds vertical/horizontal detection	transparent	92294

9. Technical data Indoor 180-S

Sensor and power supply in one case

Power supply:	110-240 VAC, 50/60 Hz
Power consumption:	< 1W
Ambient temperature:	-25°C to +50°C
Degree of protection/class:	IP20 / II
Area of coverage:	Semi-circular 360°
Recommended height for mounting:	1.1-2.2 m
Output:	Optocoupler for transmission to a Master device, max. 2W
Time-settings:	Pulse spacing 2 or 9 sec.
Dimensions H x Ø [mm]:	87 x 87 mm (including coverings)

EU Declaration of Conformity:

This product respects the directives concerning

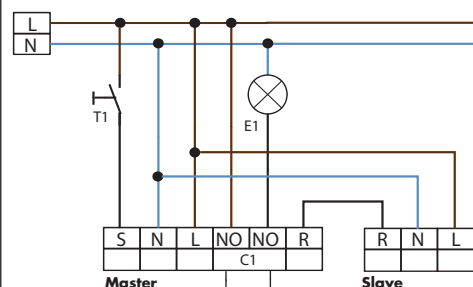
1. electromagnetic compatibility (2014/30/EU)
2. low voltage (2014/35/EU)
3. restriction of the use of certain hazardous substances in electrical and electronic equipment (2011/65/EU)



10. Wiring diagram

Schematic diagram - when connecting the detector, please respect the labelling of the terminal connections at the detector!

Standard mode with master 1-channel occupancy detectors (N/O) with R and S terminal



11. LED function displays

LED function indicator after each mains recovery (60 sec. self test cycle)

Green LED flashes fast

LED function indicator during operation

Process	LED function indicator
Motion detection	Green LED flashes on each detected movement