

Installation and Operating Instruction for B.E.G.-DCF radio receiver TS-ACC-FE

1. Wall mounting

- Loosen both screws on underside of housing and remove base plate.
- Guide 2-wire cable of any cross-section through cable grommet provided and fit to opening of base plate.
- Screw cable to clamp.
- Screw housing back onto base plate.
- Select a favourable location (see point 5, note no. 1).
- Screw fastening bracket to wall and attach receiver.

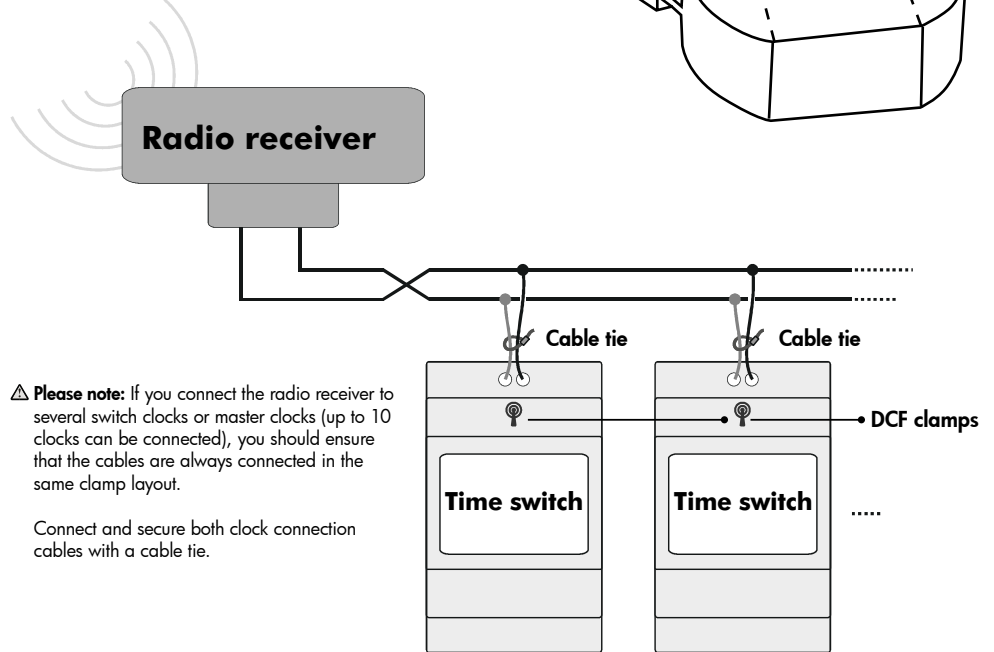
3. Article / Part nr.

Article	Version	Part nr.
LUXOMAT® TS-ACC-FE	Wall mounting with screw fastening	92683

4. Radio receiver display

- The LED, which is visible on the underside of the radio receiver, must flash every second. If the flashing is irregular or interrupted by flickering, radio reception is not possible and another location should be selected for the radio receiver. The switch computers and master switches indicate that the connection is available (radio signal flashing on the display) as soon as the radio receiver is connected. The signal on the display flashes between 2 and 3 minutes. The signal then stops.
- If the radio aerial DOES NOT receive a signal, the switch computers continue to run internally with great precision.

2. Connect switch clocks / master clocks (see note no. 2)



5. Note 1

Location and installation, in a building or outside

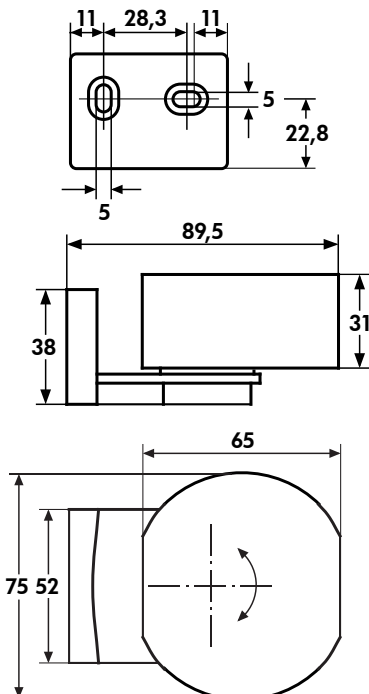
- No transformers, relays, contactors, or similar devices may be installed within a 1m radius of the radio receiver.
- The transmitter is located near Frankfurt am Main. The best way of ensuring a good reception is to point the printed front surface of the receiver in this direction. Correct reception is indicated by the LED flashing every second.
- If the receiver is mounted on a wall, it should be free of electric cables and metal bodies which could interfere with the reception.
- The radio receiver must not be installed in or near a control cabinet.

6. Note 2

Cable and laying the cable

- Connect the radio receiver and clock such that the cable does not run between the installation wall and the radio receiver.
- The cable does not need to be shielded, the cable cross-section is not specified.
- A parallel installation with power lines or phone lines should however be avoided.**

7. Hole plan for wall bracket / dimensions



8. Technical data

■ Connection voltage	230V, 50 – 60 Hz
■ Power supply	via switch clock or master clock (without battery, without rechargeable battery)
■ Output	DCF telegram
■ Receiver	narrow-band overlapping receiver (superheterodyne)
■ Reception control	via built-in LED, constantly flashes every second if there is a reception
■ Behaviour if there is interference with reception	the digital switch clocks and master clocks continue to run smoothly via their own quartz
■ Aerial	built-in ferrite rod
■ Permissible ambient temperature	-10°C to +50°C
■ Housing	self-extinguishing thermoplast
■ Dimensions	89.5 x 75 x 38 mm
■ Installation type	wall installation with fastening bracket
■ Connection type	screw clamps (lifting clamps)
■ Protection category	IP54 in accordance with DIN EN 60529