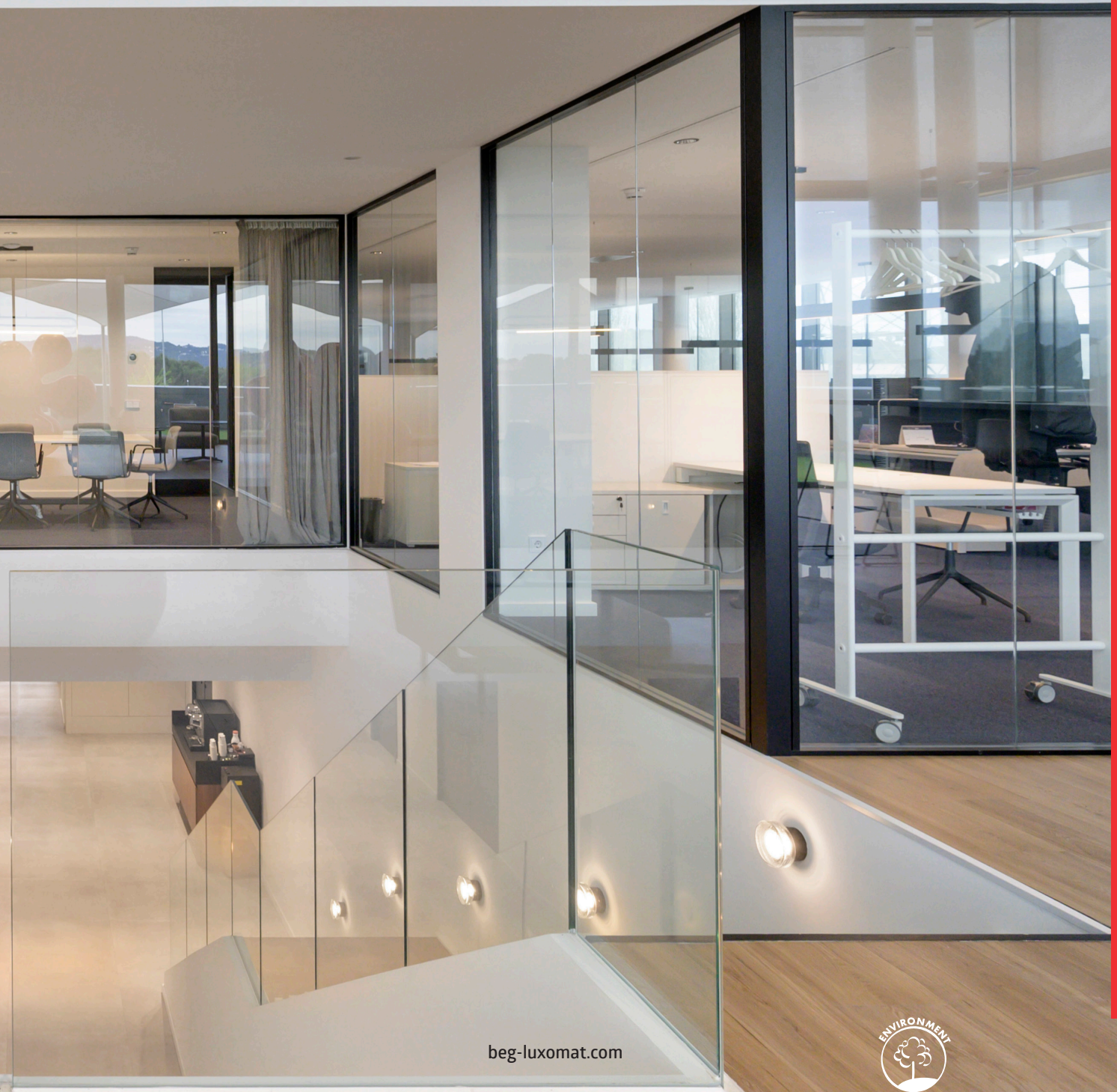




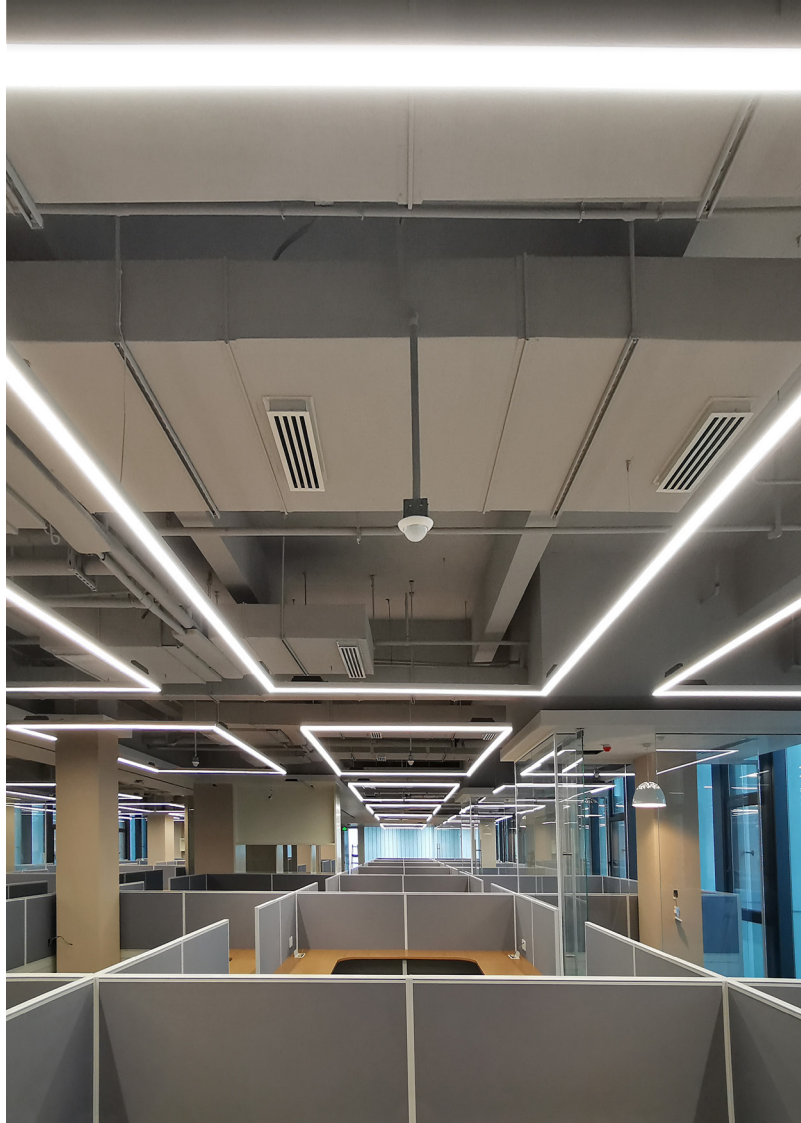
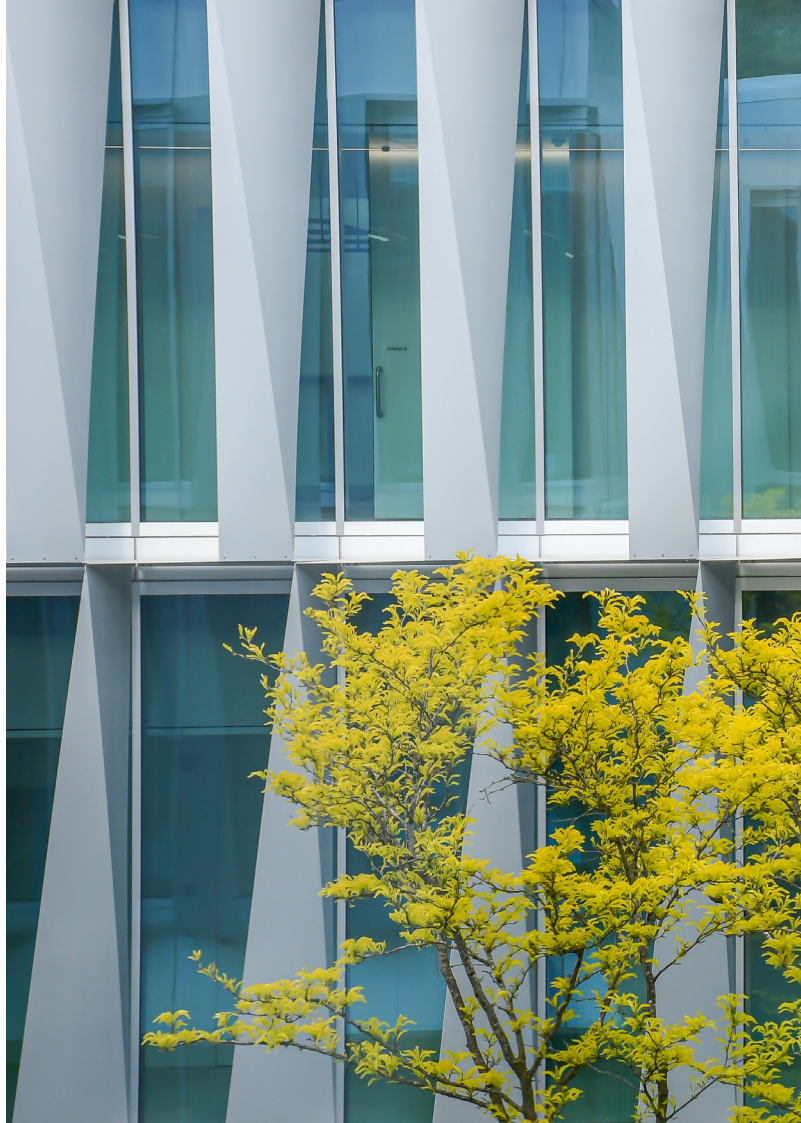
Feel comfortable in your building

HIGHLIGHTS 2026



CONTENTS

INTRO	02
Company history	04
50 years of innovative spirit and quality	05
Roadmap	06
LUXOMESH®	08
DALI DUO	12
DACO® PRO	13
DALI BMS	14
LUXONET®	16
KNX gateways	18
KNX RF	20
KNX distribution box	22
Aleum BMS2	23
Aleum Glow KNXs	24
Aleum Glow KNX-RF	25
IndoorHF detector	26
Indoor180N detector	27
VitraX	28
ViSTATION	29
Lighting	30
Colour options	31
Solutions	32





KNX[®]

DALI[®]
Alliance



HISTORY

2025

50th company anniversary – B.E.G. comprises 15 international branches

2021

Commissioning of the AutoStore

2020

Expansion of the central warehouse to 8,000 square metres on the occasion of the company anniversary.

2017

The former administrative headquarters of B.E.G. is converted into a research and development centre with its own lighting laboratory.

2014

Administration and training centre is built.

2007

Inauguration of the European sales and logistics centre with attached production and development department.

2000

Development of presence detectors with brightness sensors for daylight-dependent lighting control.

1999

Establishment of a branch in France.

1986

Manufacture of motion detectors and automatic lights. The LUXOMAT® brand is registered.

1975

Company founded with the development of emergency lights

For 50 years, the internationally active family business B.E.G. Brück Electronic GmbH, headquartered in Lindlar in the Oberberg region, has stood for quality and innovation. Since the beginning, our employees have focused on customer satisfaction.



50 YEARS OF INNOVATION AND QUALITY

Since 1975, B.E.G. Brück Electronic GmbH has stood for technological pioneering work in the field of intelligent lighting solutions. As a family-owned company headquartered in Lindlar, B.E.G. has developed from a small emergency lighting manufacturer into a leading international specialist for motion and presence detection technology.

A decisive milestone was the introduction of motion detectors under the LUXOMAT® brand in 1986 – an industry innovation in Germany at the time. Steady international expansion led to the establishment of branches in Europe and later worldwide, as well as continuous expansion of the product portfolio.

Today, 50 years after its foundation, B.E.G. employs over 300 people in 16 countries and supplies customers worldwide. The company combines product quality with state-of-the-art technology – from its own research laboratory to highly automated logistics. The focus remains unchanged: innovative solutions and maximum customer orientation



From planning to warranty claims – we are at your side

Contact us

Feel free to contact us by telephone or email at any time and describe your request. You will find our contact details on the back.

Joint planning

Our project planners will be happy to work with you to develop a comprehensive concept and advise you on the right products. Practical tools such as the B.E.G. BIM Application Suite make it easier for you to plan and optimally distribute the components in the building.

Professional installation

On request, our expert staff will assist you with installation and commissioning on site.

Ongoing support

Even after our solutions have been installed, we are always available to answer your questions about usage, reorders or on-site technical support.

Straightforward warranty processing

We place the highest value on quality in our products and installation work. However, should any defects arise, we ensure straightforward warranty processing.





SOLUTIONS
AND
SERVICE

LUXOMESH®

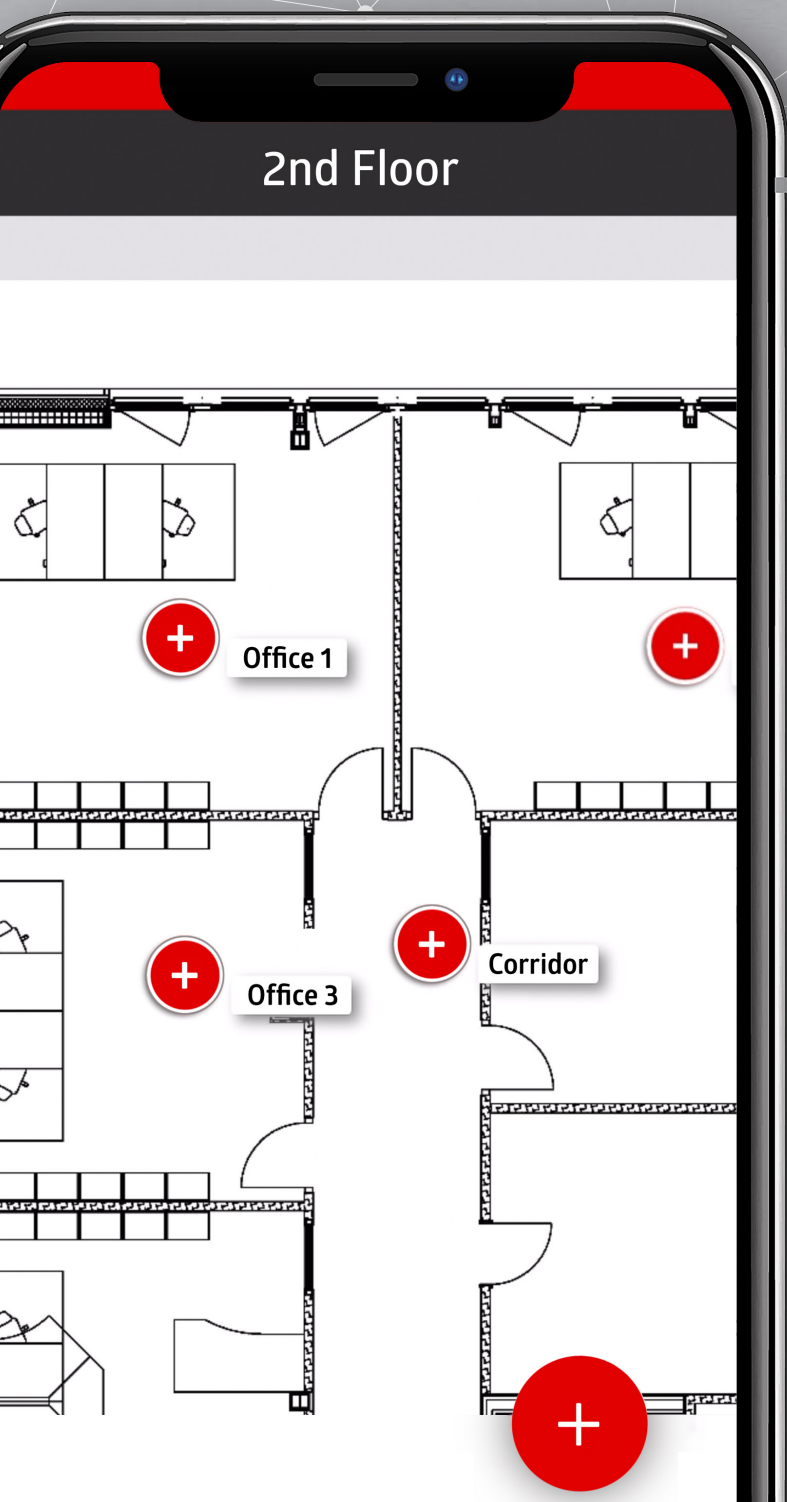


LUXOMESH®

Wherever modernisation is hampered by limited structural options, innovative solutions are required. Fortunately, B.E.G. has the right answer here too: LUXOMESH®. In this new wireless lighting control system based on the Bluetooth NLC standard (Bluetooth Mesh), all devices, sensors and control elements communicate directly via Bluetooth Low Energy, completely eliminating the need for additional BUS lines. This makes LUXOMESH® the ideal solution for renovations, old buildings, educational institutions and all projects where existing infrastructure is to be retained.

Through the consistent use of an open, internationally standardised wireless protocol, LUXOMESH® ensures cross-manufacturer interoperability and long-term investment security. The system is flexibly scalable – from individual rooms to complex, networked building structures – and is therefore particularly suitable for gradual renovations and growing facilities.

The commissioning and parameterisation of LUXOMESH® are easily prepared in the LUXOMESH® web application using floor plans. On site, the devices are simply assigned via the smartphone app. Simple adjustments can be made during operation via a mobile app. This allows both project-specific configurations and minor adjustments to be implemented without in-depth programming knowledge – a clear advantage for planners, operators and facility management.



Technology Partner
SILVAIR



The wireless lighting control system:

Scalable, connected (Mesh), standardised.

The new B.E.G. LUXOMESH® lighting control system combines wireless flexibility and standardised radio technology with professional system architecture, making it a future-proof, flexible and economical solution for projects of any size.

- Wireless lighting control system
- Scalable solution for rooms, floors and entire buildings
- Simple, intuitive commissioning and operation
- Bluetooth NLC standard for maximum future-proofing, interoperability and manufacturer independence
- Bluetooth Low Energy (BLE)
- Perfectly suited for step-by-step modernisation
- Over-the-air updates
- Strong cooperation partner Silvair
- Configuration and synchronisation via the LUXOMESH® commissioning tools
- High compatibility thanks to uniform hardware and firmware
- Product functions can be adjusted via the LUXOMESH® app



**93861
LXM-PD4-GH DALI-2**

- Bluetooth® NLC-compatible presence detector for surface mounting at great heights
- Integrated DALI power supply
- External, mechanically adjustable telescopic light sensor for mounting heights between 5 m and 16 m for applicationspecific light measurement



**93862
LXM-PD4-GH**

- Bluetooth® NLC-enabled presence detector for surface mounting at high altitudes
- Separate, powerful localisation LED for quick and reliable commissioning
- External, mechanically adjustable telescopic light sensor for mounting heights between 5 m and 16 m for applicationspecific light measurement



**93870
LXM-SW-EH**

- Battery-free radio transmitter for controlling LUXOMESH® components
- The transmission energy is generated from mechanical energy by pressing the rocker switch.
- Can be paired via the LUXOMESH® app using a QR code
- Functions can be set via the LUXOMESH® app



**93871
LXM-PBM4-230**

- Button module for controlling LUXOMESH® components
- 4 freely configurable inputs for potential-free buttons and switch contacts
- Can be paired via the LUXOMESH® app using a QR code
- Functions can be set via the LUXOMESH® app

93863
LXM-PD4N DALI-2

- Bluetooth® NLC-enabled presence detector
- DALI-2 interface for controlling digitally dimmable electronic ballasts (broadcast and multicast methods)
- Integrated temperature monitoring and short-circuit detection
- Single master device design, can be networked wirelessly



93864
LXM-PD4N

- Bluetooth® NLC-enabled presence detector
- Separate, powerful localisation LED for quick and reliable commissioning
- Mixed light measurement using internal and external light sensors
- Weighting between internal and external light sensors can be adjusted to suit the application



93865
LXM-PD2N DALI-2

- Bluetooth® NLC-enabled presence detector
- DALI-2 interface for controlling digitally dimmable ECGs (broadcast and multicast methods)
- Integrated temperature monitoring and short-circuit detection
- Single master device design, can be networked wirelessly



93866
LXM-PD2N

- Bluetooth® NLC-enabled presence detector
- Mixed light measurement using internal and external light sensors
- Weighting between internal and external light sensors can be adjusted to suit the application



93867
LXM-DT6

- Bluetooth® NLC module for controlling DALI DT6 control gear
- Integrated DALI power supply
- DALI interface for controlling digital, dimmable ECGs using the broadcast method
- The firmware can be conveniently updated remotely via wireless connection
- Functions can be set via the LUXOMESH app



93868
LXM-DT8

- Bluetooth® NLC module for controlling DALI DT8 control gear
- Integrated DALI power supply
- DALI interface for controlling digital, dimmable ECGs using the broadcast method
- The firmware can be conveniently updated remotely via wireless connection
- Functions can be set via the LUXOMESH app



93869
LXM-DT1

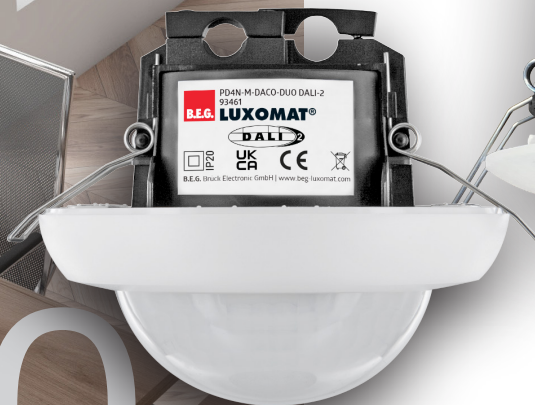
- Bluetooth® NLC module for controlling DALI DT1 control gear
- Integrated DALI power supply Support for DALI
- Support for DALI emergency lights (DT1) with comprehensive diagnostic and test functions
- The firmware can be conveniently updated remotely via wireless connection
- Functions can be set via the LUXOMESH app



DALI DUO



DUO



The DACO Duo makes lighting in offices, classrooms, corridors, and entrance areas particularly flexible and convenient. One sensor controls two light strips separately, automatically adjusts brightness to daylight and occupancy, and can be controlled manually via push buttons if required.

Thanks to clever technology, stand-alone solutions are also possible without complicated settings. A single brightness sensor ensures that both light channels are controlled separately, while additional functions such as soft start-up, orientation light, or adjustment of the light channels offer even more convenience. The DACO Duo is ideal for small and large offices, educational spaces, corridors, stairwells, traffic areas in hotels or hospitals, storage areas, or retail spaces – smart lighting solutions for every situation.

Examples of use:

Small and large offices, educational spaces, entrance areas, corridors, stairwells, hospitals/hotels (traffic areas), production/warehouses, retail

- **Separate control of two DALI light strips**
- **Broadcast technology for simple stand-alone solutions**
- **Daylight and presence-dependent control**
- **Manual override via conventional push button (230 V)**
- **Orientation light and soft start**
- **Offset between channels 1 and 2 for individual adjustment**
- **Master-slave configuration possible**

Intelligent lighting control for every room



DACO® PRO



- Up to 8 control loops addressable
- Multicast connection of BMS sensors
- Fast, intuitive parameterisation via app
- Orientation light
- Guided light
- Human Centric Lighting (HCL)
- Automatic calibration
- 4 button inputs 230V (DALI button & relay)
- Fast addressing via smart infrared device



DACO® PRO is our new multicast product family and expands our compact detector portfolio. The new detector is capable of controlling up to 8 control loops. This enables cross-room control via additional BMS sensors – with just a single DALI line.

For example, when the partition wall is closed, the lighting in the rooms can be controlled independently of each other. When the partition wall is opened, one control loop follows the other, so that both areas react together and synchronously.

DALI BMS



For use with DACO® PRO, LUXONET® and other compatible lighting control systems

B.E.G. also offers a wide range of its presence detectors as BMS multi-sensors. These can be integrated into modern lighting control systems via the existing or planned 2-wire DALI cable.

Compared to classic 230V presence detectors, the installation effort is significantly reduced: several BMS sensors can be operated together with DALI luminaires on a bus line. Separate supply lines or individual terminals per sensor are no longer necessary.

The BMS multi-sensors are so-called “input devices” in the DALI ecosystem and transmit standardised information such as movement, presence and light values in multi-master operation. This makes them flexible for integration into multi-master-capable application controllers.

With high detection quality and reliable light measurement, the BMS family is suitable for almost all applications – from the compact PICO sensor and the flat PD11 to the PD4-BMS-GH for high mounting heights.



Standardised multi-sensors and push



Features

- DALI-2 control devices of class „Input Device“ developed in accordance with IEC 62386 Parts 101, 103, 301, 303 and 304
- Multi-sensors and push buttons via DALI
- Lighting control is centralised via a compatible multimaster application controller from any manufacturer
- Operating voltage via DALI bus
- Wide range for a variety of requirements
- Multi-sensors:
 - Bright LED indication for quick localisation
 - External light sensors
- Commissioning and maintenance by the system integrator of the lighting control solution used

Functions (multi-sensors)

- Transmits LUX values as required
- Transmits information about room occupancy and motion detection as required
- Integrated hold time for room occupancy detection
- Polling support
- Adjustable weighting of additional ambient light measurement (PD2 / 4N only)
- Adjustable sensitivity of PIR sensor technology
- LED indication can be switched off

LUXONET®

FB Controller 9350

Automatic DALI configuration processes – a real highlight

The extensive automation of the DALI ecosystem reduces commissioning and maintenance costs to a minimum and increases operational reliability in the long term:

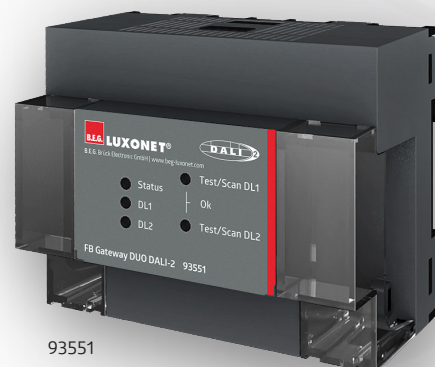
- Automatic addressing, configuration and grouping of DALI participants
- Automatic routing of DALI telegrams
- Auto-healing when replacing DALI devices



LUXONET® is an easily scalable and flexible building automation solution for the planning, commissioning and operation of intelligent lighting and room automation in smart buildings. Projects can be planned and configured virtually on a PC without special hardware using cloud-based software in the office. Commissioning on site is floor plan-based using a tablet and is reduced to linking digital twins, transferring the entire virtual configuration to the fieldbus controller and finetuning the script-based automation. Intuitive operation with floor plan display, drag-and-drop functions and ready-made automation templates ensures efficient, traceable workflows throughout the entire project cycle.



93550



93551

Easy connection to building management systems

- Connection to BMS via integrated MQTTS API
- Status queries, parameter overwrites and override of output groups
- Multi-level security through
 - Secure by Design with PKI
 - Fully updatable and cryptographically signed firmware
 - Encrypted TLS communication
- Multi-factor and certificate-based authentication
- Offline operation possible
- Connection to BACnet, Modbus, and LON systems possible with additional products

Plug & Play with B.E.G. ViSTATION®

- Visualization
- Energy monitoring
- Scheduling
- Remote control (optional)
- Emergency light management

Easy light replacement

- Automatic for short maintenance intervals
- Guided step-by-step wizard for longer maintenance intervals

**Smarter, safer,
even more
efficient.**

Reliable DALI-2 lighting control in the KNX system



■ 2 DALI channel

■ 1 DALI channel

- KNX Secure
- DALI-2 certified
- 64 addresses, 16 groups, 16 scenes, broadcast
- Emergency lighting management support
- Supports RGBW, TW and HCL

With the KNX-DALI single-master gateways, B.E.G. offers powerful solutions for the reliable control and regulation of DALI luminaires in the KNX system. The gateways are DALI-2 certified and support KNX Secure, ensuring secure and standard-compliant integration into modern building automation systems.

The DA-SM-230/KNXs REG DALI-2 has one DALI channel and is ideal for compact applications. For larger projects, the DA-SM-DUO-230/KNXs REG DALI-2 is available with two independent DALI channels, which significantly increases the number of controllable luminaires and groups.

Both gateways enable the management of 64 addresses, 16 groups and 16 scenes per DALI channel and support broadcast commands and integrated emergency lighting management. In addition, modern lighting concepts such as RGBW, Tunable White and Human Centric Lighting (HCL) can be conveniently implemented.

- KNX Secure
- DALI-2 certified
- 1 DALI channel for up to 10 operating devices
- 64 addresses, 16 groups, 16 scenes, broadcast
- Support for RGBW, TW and HCL



Compact DALI-2 integration for ceiling

The DA-MINI/KNXs DALI-2 is the ideal solution for decentralised applications with limited space. As a compact mini gateway for ceiling installation, it enables reliable control of DALI luminaires directly in the KNX system.

The gateway is DALI-2 certified and supports KNX Secure. Up to 10 control gear units can be connected via a DALI channel. Despite its compact design, the DA-MINI offers full support for 64 addresses, 16 groups and 16 scenes, as well as broadcast functions. Modern lighting applications such as RGBW, Tunable White and HCL can also be implemented without any problems.

Intelligent lighting control with BMS integration



The DA-BMS-230/KNXs REG DALI-2 is a multi-master gateway for sophisticated lighting control and building automation solutions. It connects KNX with DALI-2 and enables reliable control and regulation of DALI luminaires while maintaining a high degree of system openness.

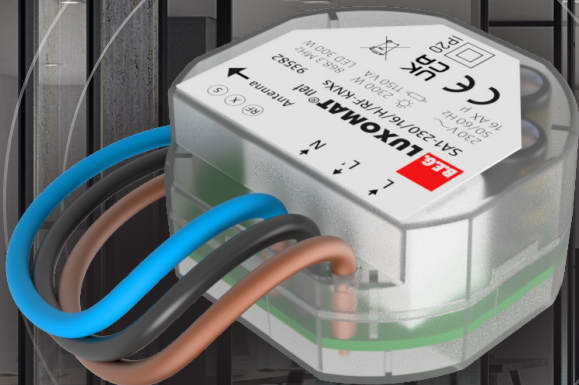
In addition to DALI-2 certification and KNX Secure, the gateway supports a DALI channel with 64 addresses, 16 groups and 16 scenes, as well as emergency lighting management and modern lighting concepts such as RGBW, Tunable White and HCL.

The gateway also offers eight integrated constant light control circuits and is specially designed for the integration of BMS DALI-2 sensors and devices. The range of functions is complemented by IoT-based diagnostic and energy data, which significantly increase transparency and efficiency in operation. The range of functions is supplemented by the reading of diagnostic and energy data from the luminaires to significantly increase transparency and efficiency in operation.



The KNX RF Switch Actuator 230V is the ideal solution for renovations and modernisations where no KNX bus lines are available. Communication is reliable via KNX RF in the 868 MHz band, with an internal high-performance antenna. The compact 1-channel flush-mounted actuator is KNX Secure-compatible, has a switching contact that is specially optimised for capacitive loads, and a practical test button on the housing. Thanks to the integrated repeater function, the radio range can be easily extended. Connection is convenient via pre-assembled connection wires.

The combination of the switch actuator with the KNX RF sensor PD2N-RF-KNXs-DX-DE is particularly suitable: for example, presence or motion signals can be reliably detected by radio and directly trigger switching actions. This comprehensive functionality creates a flexible, powerful overall system for smart retrofitting and a versatile component for modern KNX RF installations.



The compact
switch actuator
for any renovation



KNX REG

KNX series flushmounted devices Step by step KNX Secure














- Extensive product range for a wide variety of applications
- Series-mounted devices for flexible system solutions
- Integration of DALI components via the KNX-DALI gateway
- Secure communication through KNX Data Security

Our KNX series-mounted devices (REG) form the heart of many applications in building automation. They enable the implementation of a wide variety of control requirements – from switching and regulation to the processing of external signals – right through to convenient operation and visualisation.



DIN-RAIL DEVICES

 <p>90225 UAD1-230/KNXs REG 1-Channel Universal Actuator dimming actuator</p> 	 <p>90410 LK-TP/KNXs REG TP Line coupler System device</p> 
 <p>93224 SA4-230/16/H/ KNXs REG 4 Switch outputs Switching actuator</p> 	 <p>90403 LK-IP/KNXs REG IP Router System device</p> 
 <p>93228 SAB-230/16/H/ KNXs REG 8 Switch outputs Switching actuator</p> 	 <p>90404 LAN-IF/KNXs REG LAN Programming interface System device</p> 
 <p>93328 SA12-230/16/H/ KNXs REG 12 Switch outputs Switching actuator</p> 	 <p>90411 BIA4-KNXs REG 4 Inputs active Binary inputs</p> 
	 <p>90412 BIP4-KNXs REG 4 Inputs passive Binary inputs</p> 

With each new generation of devices, we expand our range with KNX Secure (KNXs)-compatible products and gradually make our KNX series devices fit for the future.

KNX Solution Box



All components compactly combined

The B.E.G. KNX Solution Box combines all the important components for an efficient KNX installation in a compact distribution box. It is the ideal solution for implementing modern building automation systems and provides the technical basis for numerous KNX applications – clearly arranged, space-saving and ready for immediate use.

The box contains all the central modules you need for a professional KNX installation:

1 90215
PSN-230/1280/30/KNX REG
 Power supply for KNX systems

2 93335
ViSTATION
 Visualisation solution for intuitive control and operation

3 93338
DA64-230/KNX REG DALI-2
 Power supply for KNX DALI gateway

4 90403
IP/KNXs Router
 Power supply for KNX-IP router

5 90215
USB-C-IF/KNX REG
 USB programming interface for easy project planning and commissioning

6
TEL-Router
 Provides local WLAN connectivity and additional flexibility in the network



Industries / Branches



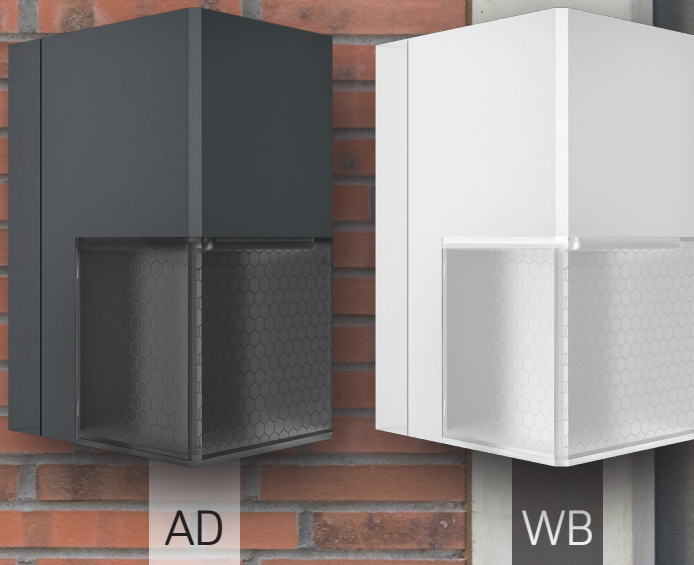
School classes



Gymnasiums



ALEUM BMS2 DALI-2



The new Aleum BMS2 DALI-2 multi-sensors expand the Aleum family with intelligent sensors for precise light and motion control. As DALI-2 input devices, they enable flexible integration directly into the KNX system.

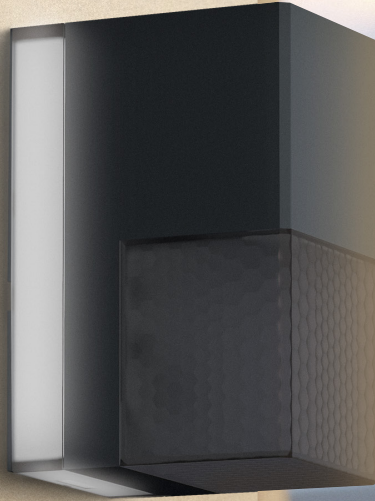
The PIR sensor can be individually adjusted in terms of sensitivity, while the light sensor with adjustable bit resolution and adjustable reflection factor delivers precise lux values. A total of seven instances are available: motion, brightness and five button inputs, which can be used flexibly via the B.E.G. IR Mini remote control.

- DALI-2 multisensor (input device)
- Individual PIR sensitivity
- Adjustable bit resolution of the light sensor
- Adjustable reflection factor for lux value
- 7 instances: motion, brightness, 5x push-button inputs

ALEUM Glow KNXs



The popular Aleum Glow motion detectors are now available with KNX Secure (KNXs), offering secure integration into modern KNX building networks. Available in white and anthracite, they combine purist design with intelligent lighting automation and blend harmoniously into any interior or exterior architecture. Four PIR sensors with a 180° detection range, creep detection and a range of up to 16 m ensure automatic lighting and increased security. The Generation 7 DX guarantees precise motion detection. The discreet ambient light stylishly sets the scene for the detectors, and flexible settings such as colour selection or party mode offer additional possibilities.



- KNX Secure
- Functionality Generation 7 DX
- Ambient light

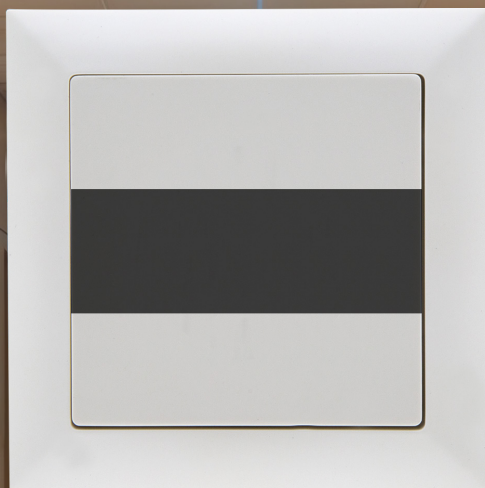
New, modern, maximum comfort



- KNX Secure
- KNX radio 868 MHz
- Bluetooth for configuration and operation
- Ambient Light
- 230V operating voltage
- Relay for light control

The Aleum Glow KNXs-RF models expand the proven Aleum Glow family with wireless KNX-functions and maximum flexibility. In addition to KNX Secure, they now enable a wireless-connection, making integration into modern-building networks particularly convenient and secure. All settings can be conveniently configured via Bluetooth, and thanks to the integrated relay, lights can be controlled directly – ideal for individual lighting solutions with maximum convenience.

Precise detection in linear and narrow rooms



The new indoor detectors from B.E.G.

With its new indoor series, B.E.G. presents two presence detectors that combine modern building technology with timeless design. The flat 55x55 mm design blends inconspicuously into the wall and harmonises with almost all common switch ranges. Both models are available in traffic white in matt or glossy finishes. Installation is quick and easy without claws, while all settings can be conveniently adjusted via the B.E.G. app and the BLE-IR adapter. Both models share the same minimalist design language but offer different technologies for specific architectural requirements.

Indoor HF-M-1C: Precise detection in linear and narrow spaces

The Indoor HF-M-1C is particularly suitable for long corridors or narrow entrance areas. Its HF technology works radially across multiple detection zones and detects movement better than a classic PIR detector. In corridors up to 16 metres long, two detectors placed at the ends for consistent, reliable detection. It also impresses in open washrooms or sanitary ante-rooms with its reliable presence monitoring and discreet appearance. Furthermore, it is ideal for individual offices, doctors' surgeries, narrow foyers and small rooms where people sit directly opposite the door.

For complex rooms with restricted sightlines

The Indoor180N-M-1C combines a powerful PIR sensor with an acoustic sensor that automatically extends the follow-up time as soon as noise is detected. This makes the detector ideal for sanitary facilities with cubicles, stairwells, or areas with changing sightlines. The additional downward-facing PIR extends the detection range and also allows installation above doors, for example in schools or public facilities. With its long range, the Indoor180N provides security in rooms where RF or classic PIR technology alone would not be sufficient. The detector also delivers optimal results in large lobbies and entrance areas, long corridors, and technical rooms.

HF or PIR?

The decisive difference in planning

While PIR detectors reliably detect movements primarily across the sensor axis, they often react with a delay when approached head-on. The HF technology of the Indoor HF-M-1C, on the other hand, works radially and reliably detects movement along a room axis. This makes the new indoor series the ideal choice for reliable, architecturally appropriate presence and light-control in corridors, sanitary areas, individual offices or stairwells.





Applications:

Hotels & Hospitality
Private Properties

Flexible functions

VitraX offers flexible functions for modern buildings and hotel applications in particular. Depending on the configuration, the display, multiple button modules and integrated PIRmotion detection can be combined. Functions such as lighting control, blind and curtain control, and HVAC and temperature control are managed centrally via a single control device and operated intuitively using clearly defined, backlit symbols. There are 36 function symbols available, which can be freely configured in the ETS. In addition, VitraX supports hotels with special check-in and checkout functions and enables comfortable scenarios for guests as well as efficient operational processes.

Modular design

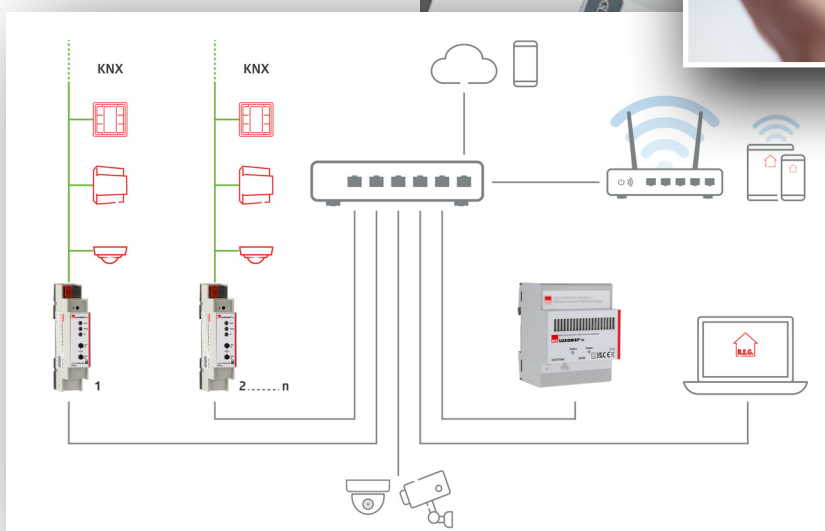
The modular design of VitraX allows it to be individually adapted to any application. The system is based on a KNX basic wall module and can be combined with single or double frames, display modules and various button modules – optionally with integrated PIR. Backlit button symbols ensure clear orientation and a high-quality, modern look.

More functions, more performance

From lighting and heating to blackout blinds: B.E.G. ViStation is the central platform for visualising and controlling your building automation. Firmware 4.2 further optimises userfriendliness: the intuitive interface, simplified project creation and central user management enable even more convenient access to all control functions.

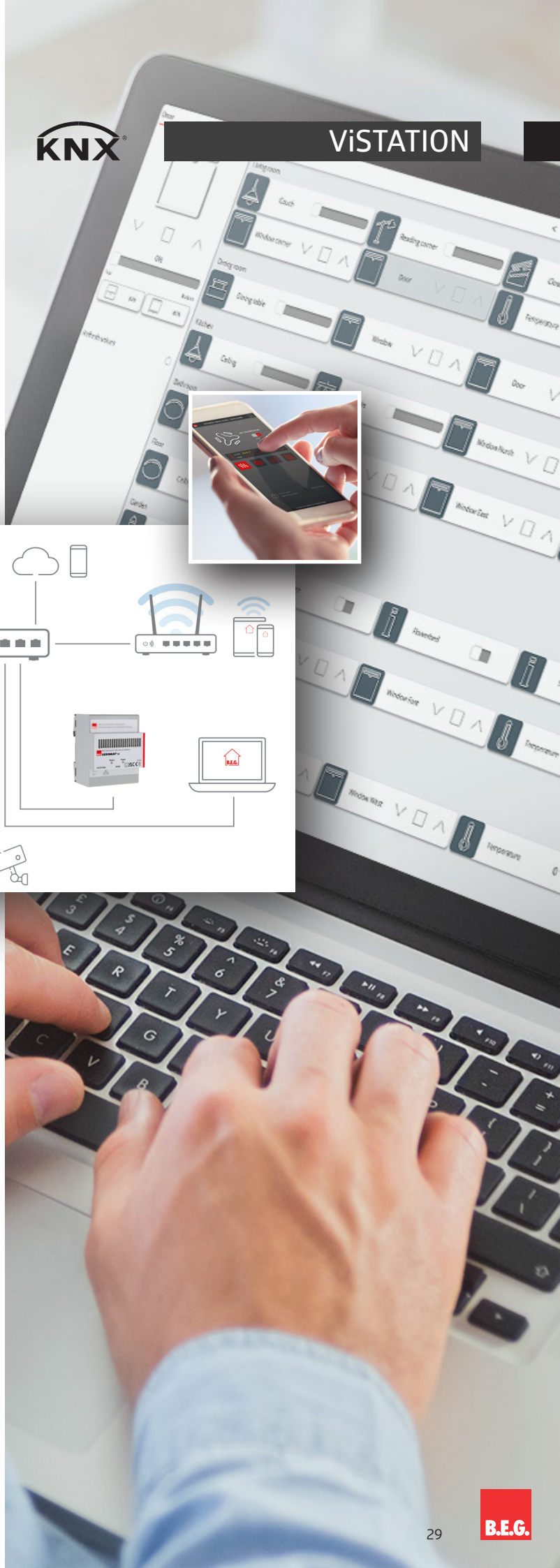
Visualise and parameterise your projects in either floor plan or tile view and operate the system flexibly via tablet, smartphone or PC – regardless of platform or location.

In addition to KNX, ViStation also supports DALI-SYS and connection to cloud or higher-level BMS systems via MQTT.



The software is scalable: even the basic version can visualise up to 200 devices, expandable in increments of 200 to up to 1,600 devices. For even larger projects, B.E.G. offers a Windows-based solution for unlimited device integration.

In short: ViStation makes your building automation clear, flexible, and even more user-friendly – the ideal basis for efficient planning, visualization and control.



Flat LED panels with flexible light colour

- LED panel light in a very flat design
- For installation in suspended ceiling systems modul 625
- Adjustable light colour from 2700 K to 6500 K
- DALI-2 driver type 8 for colour control
- Good glare control thanks to microprismatic UGR<19
- Very uniform illumination of the prismatic cover

The PL1-G2-625-LED- and PL1-G2-600-LED-TW LED panel lights impress with their very flat design and are ideal for installation in suspended ceiling systems of modules 625 and 600. The light colour can be flexibly adjusted from 2700 K to 6500 K, controlled via a DALI-2 type 8 driver.

Thanks to the microprismatic lens with UGR <19, the luminaires offer pleasant glare control and very uniform illumination of the prismatic cover. They are used in a wide range of applications, including classrooms and seminar rooms, small and openplan offices, conference rooms, entrance areas, corridors, stairwells, toilets, storage rooms and technical rooms.

Examples of use:

Classrooms/seminar rooms, small offices, open-plan offices, conference rooms, entrance areas, corridors, stairwells, toilets, storage/technical rooms

Colour options

RAL
7016

RAL
9005

RAL
9016

Whether ceiling presence detectors, outdoor motion detectors or wall detectors: B.E.G. offers all components for modern building automation – individually or as a complete solution. A particular advantage is their flexible adaptability. With the numerous items from the B.E.G. range of accessories, the basic products can be easily supplemented and developed into a tailor-made solution.

Perfectly tailored to every need: colour options for B.E.G. products



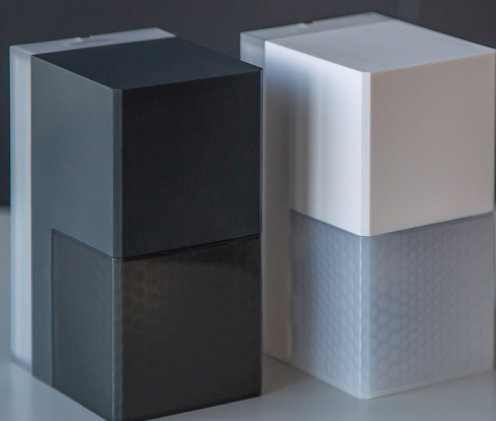
More flexibility thanks to clever accessories:

From sturdy wall brackets and discreet cover slats to decorative design frames, you can customise your B.E.G. devices to suit the installation situation and your personal preferences. For example, motion and presence detectors can be optimised in their detection range with different lens variants, while special mounting kits facilitate easy integration into different environments. For outdoor use, B.E.G. offers customised mast mounts that ensure long-term stability thanks to their weather protection device made of stainless steel. The range of accessories also includes RC suppression elements for suppressing electrical interference in the lighting system, protective cages for B.E.G. motion and presence detectors, and numerous other products.

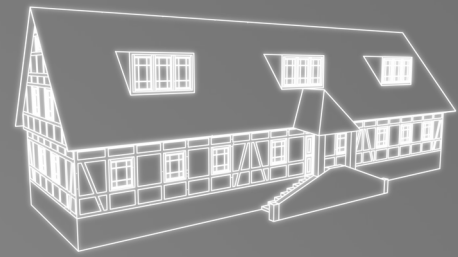
More individuality through matching colours

In addition to accessories, B.E.G. also offers a range of special customisation options, including a choice of colours. After all, a pure white presencedetector does not always suit the local conditions. In modern hotel lobbies or industrial-style offices, for example, dark devices often blend in better with the overall look. That is why B.E.G. offers many products and accessories, such as sensors, cover rings, surface-mounted frames, bases and boxes, in several colour options:

The wide range of B.E.G. accessories and colour options guarantees our customers maximum flexibility, ensuring that every installation impresses with the desired functionality and appearance.



Solutions for old buildings



Modern lighting control in historic buildings

Old buildings and listed buildings pose special challenges when it comes to technical modernisation. Interventions in the building fabric are often not permitted, and new cable routes are only possible to a limited extent – at the same time, demands for comfort, energy efficiency and flexible use are increasing. Classic, wired lighting control systems are usually unsuitable for this purpose.

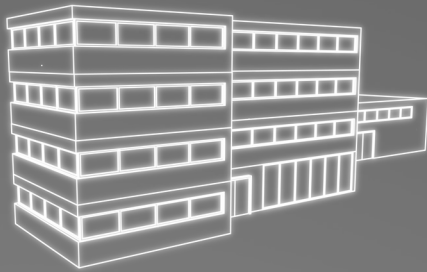
The solution: LUXOMESH®

With LUXOMESH®, B.E.G. offers a wireless lighting control system that has been specially developed for revitalisation projects. Sensors, lights and control elements communicate directly via Bluetooth Low Energy using the open Bluetooth NLC standard (Bluetooth Mesh) – no additional BUS cables are required.

This means that even complex lighting control concepts can be implemented without altering the historic fabric of the building. LUXOMESH® is flexibly scalable – from individual rooms to networked buildings – and is ideal for renovations, listed buildings and step-by-step modernisation projects. Commissioning is carried out efficiently via the LUXOMESH® web application and smartphone app. Adjustments can be made at any time during operation – without complex programming and with minimal effort for operators and facility management.



- Wireless lighting control system
- Greater flexibility thanks to cloud-based configuration
- Scalable for rooms, floors and buildings
- Simple, intuitive commissioning
- Bluetooth NLC standard for interoperability and future-proofing
- Bluetooth Low Energy (BLE)
- Ideal for step-by-step modernisation
- Over-the-air updates
- Configuration via LUXOMESH® commissioning tools



Challenge: Flexible use in educational institutions

Schools are facing increasing demands for flexibility, energy efficiency and comfort. Gyms with partition walls in particular require dynamic control of lighting, scenes and room functions. Traditional systems with rigid cabling are often too inflexible.

The solution: LUXONET®

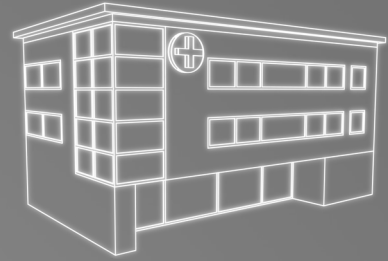
LUXONET®, the cloud-based building automation system from B.E.G., was developed for flexible, complex rooms. Networked intelligence at IP level and automated DALI processes allow rooms to be shared, scenes to be programmed and luminaires to be exchanged – even during operation. Integration into existing building management systems is securely carried out via MQTTS, TLS, multi-factor authentication and FOTA updates. Offline operation is supported.

The plug-and-play connection via ViSTATION® enables visualisation, energy monitoring, scheduling, remote control and emergency lighting management. Commissioning is carried out virtually via drag & drop, with automatic addressing and templates facilitating setup.

Further solution: DACO® PRO

As an alternative to classic LUXONET® control, DACO® PRO can be used in schools with gyms when particularly flexible and reliable lighting control is required. The main challenge here is partition wall control: the lighting should operate independently of each other in closed hall areas and react synchronously when the partition walls are open.

DACO® PRO is our innovative multicast product family, which can be used to control up to eight control circuits on a single DALI line. The intuitive smartphone app allows the control circuits and BMS sensors to be parameterised and assigned without complex programming. This means that rooms can be controlled individually or collectively – perfect for classroom teaching as well as for sports lessons or events in the hall.



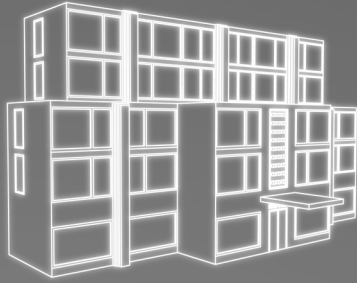
Maximum reliability in control operation

Lighting in hospitals must function reliably at all times. It does not matter what time of day, in which area or in which building this occurs. At the same time, energy efficiency, comfort and operational safety play a central role.

The solution: DALI-SYS

DALI-SYS is a powerful and scalable lighting control system that is specially designed for safe continuous operation in complex buildings. The lighting is presence- and daylight-dependent and operates in the background. The light is automatically switched on and dimmed as soon as an area is in use, and reduced as soon as there is sufficient daylight. This reduces both energy consumption and operating costs while ensuring a high level of operational reliability.

- Presence and daylight-dependent lighting control
- Guided Light for safe orientation in corridors and traffic routes
- Energy savings through demand-based switching off and dimming
- Room- and line-wide lighting control



Challenge: Flexible building automation with maximum comfort

Hotels place high demands on comfort, flexibility, and intuitive operation. Different areas of use, such as guest rooms and public areas, require intelligent control that adapts to changing requirements and offers maximum ease of use.

The solution: KNX + NETx + VitraX

This combination enables powerful building automation, specially designed for modern hotel applications. VitraX is a modular KNX control device that combines display button modules with integrated PIR motion detection. Lighting, blinds and curtains, as well as HVAC and temperature controls, can be controlled centrally via a single device and operated intuitively using clearly backlit symbols.

Thanks to its modular design, VitraX can be individually adapted to different room types and comfort requirements. In conjunction with KNX and NETx, this creates a future-proof, scalable solution that increases guest comfort while simplifying operation and management.

Further solutions: PD9-SH + Controller

- Modular KNX system for flexible room concepts
- Integrated PIR motion detection for energyefficient operation
- Uniform control of lighting, blinds, curtains and HVAC
- High guest comfort through intuitive central room control
- NETx enables the implementation of heating, shading, exclusion of unused areas, increased security, comfort
- Scalable from individual rooms to entire hotel complexes



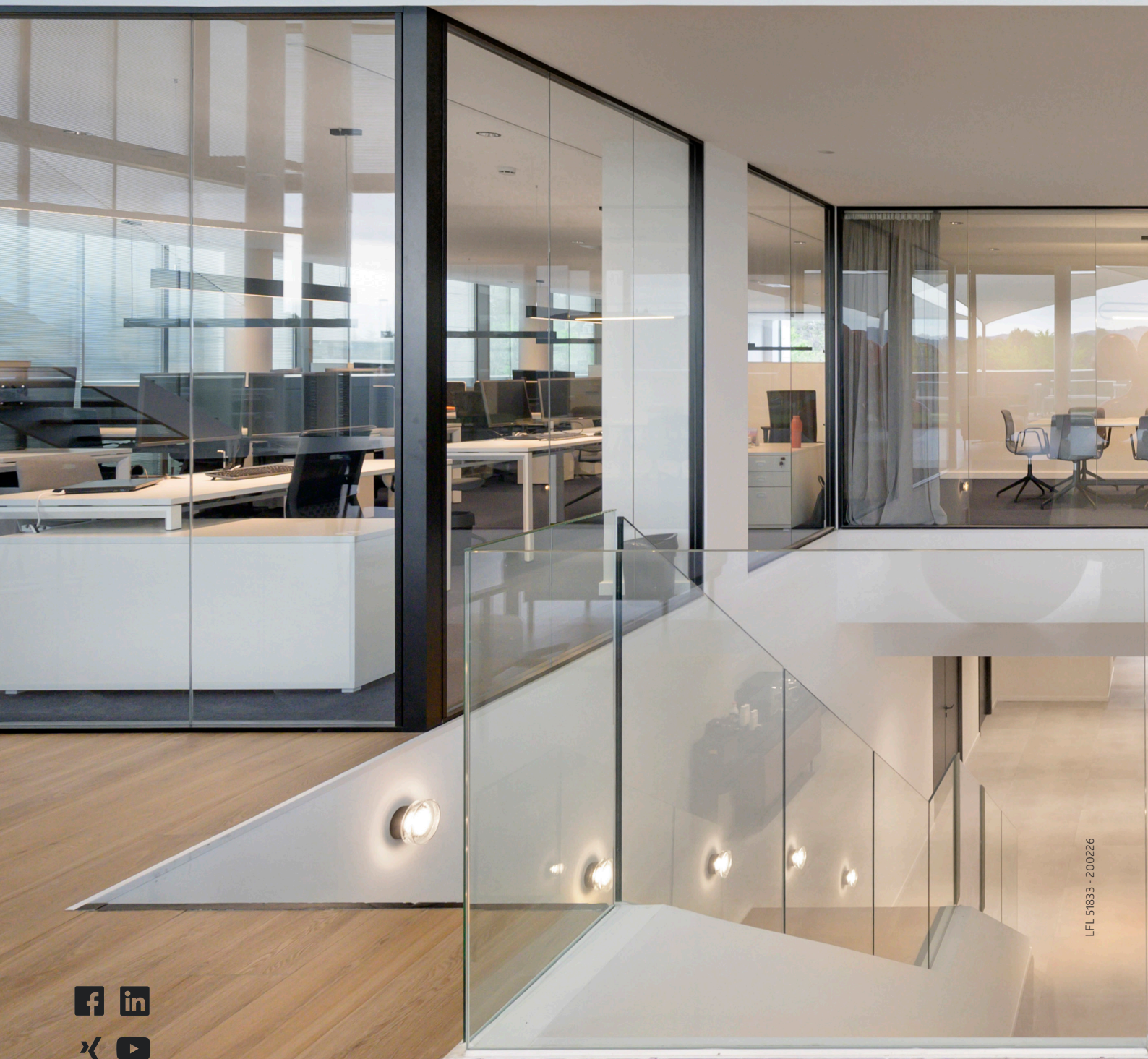
B.E.G.

Headquarters

B.E.G. Brück Electronic GmbH
Gerberstraße 33, 51789 Lindlar

T +49 (0) 2266 90121-0

vertrieb@beg.de
beg-luxomat.com



LFL 51833 - 200226

