



Bild: ©peshkova - stock.adobe.com

Energy efficiency, comfort and flexibility for large rooms

- Casambi-enabled occupancy detector
- With a detection range of up to 24 m and 2 light sensors, perfect for use in large rooms
- Can be networked wirelessly and customised in colour with accessories for great flexibility
- Flexible and quick parameterisation of individual sensors via smartphone/tablet using Casambi app
- Mixed light measurement by means of inner and outer light sensor, can be adapted to suit the application
- Extension of the detection range possible with additional B.E.G. Casambi devices



Two versions are available

The PD4N-CAS DALI-2 enables intelligent, wireless extension / retrofitting to existing DALI-controlled lighting systems. It has a certified DALI-2 output with integrated power supply. Without much installation effort, this single-master device can simply be connected to a DALI line.

A PD4N-CAS can be used for integration into CASAMBI systems. It makes its sensor information available wirelessly to all other devices in the system.

The new Casambi-enabled PD4N-CAS DALI-2 and PD4N-CAS occupancy detectors enable wirelessly networked lighting control with a great deal of flexibility without increased installation effort. For example, several individual luminaire groups can be combined in a lighting scene and thus orientation lighting areas can be set up. This provides increased comfort and safety for the user.

Entrance areas, Hallways/corridors, open-plan offices, conference rooms, classrooms/seminar rooms, sports halls/warehouses, function rooms, underground car parks, staircases - these are areas of application for these sensors. With 2 light sensors, even difficult lighting situations are mastered. Movements in tangential direction are detected with a diameter of up to 24 m.



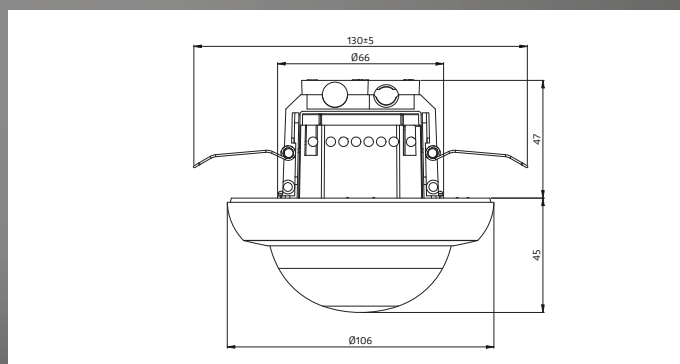
Products

Designation	Colour	Part number
PD4N-CAS DALI-2	white	93473
PD4N-CAS	white	93474

Technical Data

- Voltage: 230 V~ ±10% 50 Hz
- Dimensions: Ø 106 x 95 mm
- Parameterisation: Casambi-App
- Typical power consumption: 0,5 W
- Class / Degree of protection: IP20 / Class II
- Ambient temperature: -5°C to +45°C
- Range of coverage: max. Ø 24 m
- Mounting height
min./max./recommended: 2 m / 10 m / 2.5 m
- DALI output current guaranteed
(PD4N-CAS DALI-2): 80 mA

Dimensions



Schematic diagram

