

B.E.G.**LUXOMAT®**

RC-plus next N 280

Prod.No. 93343 EAN: 4007529933433

- Voltage: 110 – 240 V AC 50 / 60 Hz (can also be supplied with other operating voltages ON request)
- Dimensions: 121 x 71 x 85 mm
- Power consumption: approx. 0.5 W

Areas of application

- outdoor areas (entrances/access roads)
- parking areas
- underground car parks
- high-bay warehouse

Order data

| Designation | Colour | Art.No |
|--------------------|--------|--------|
| RC-plus next N 280 | black | 93343 |

Accessories

| Designation | Colour | Art.No |
|------------------------------------|--------|--------|
| RC-Arc extinction kit | white | 10880 |
| Mini-RC-Arc extinction kit | | 10882 |
| BLE-IR-Adapter | black | 93067 |
| IR-RC | - | 92000 |
| IR-RC-LD | - | 92649 |
| IR-RC-Mini | - | 92090 |
| Wire basket BSK (Ø 164 x 143 mm) | white | 92467 |
| Outside corner socket RC-plus next | black | 97024 |
| Outside corner socket RC-plus next | brown | 97014 |
| Outside corner socket RC-plus next | white | 97004 |
| Outside corner socket RC-plus next | silver | 97043 |

| | | |
|--------------------------------------|-----------------|-------|
| Inside corner socket RC-plus next | white | 97005 |
| Pole holder | stainless steel | 93220 |
| Wall holder | white | 93222 |
| Wall holder | anthracite | 93221 |
| Blinds RC-plus next | | 32697 |

Technical data

| | |
|---|---|
| Voltage: | 110 – 240 V AC 50 / 60 Hz (can also be supplied with other operating voltages ON request) |
| Dimensions: | 121 x 71 x 85 mm |
| Power consumption: | approx. 0.5 W |
| Detection area: | horizontal 280° (Wall mounting) max. 20 m across max. 6 m towards |
| Range: | max. 4 m anti- creep protection |
| Monitored area (tangential movement): | 970 m ² / 2.5 m mounting height |
| Mounting height min./max./recommended: | 2 m / 5 m / 2.5 m |
| Degree / class of protection: | IP54 / Class II |
| Impact strength: | IK03 |
| Ambient temperature: | -25 °C to +50 °C |
| Housing: | polycarbonate, UV-resistant |
| Material color: | black mat, similar to RAL9005 |

Channel 1 (lighting control)

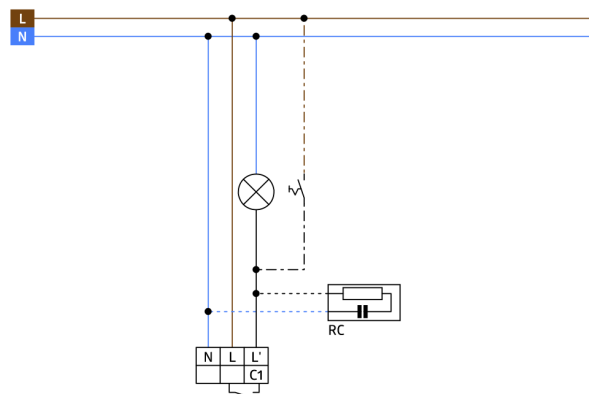
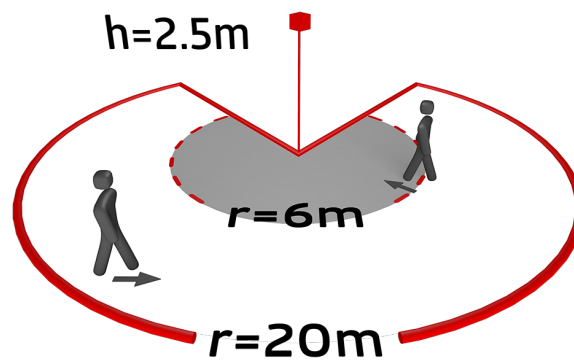
| | |
|----------------------|---|
| Switching power: | 3000 W, $\cos \varphi$ = 1 1500 VA, $\cos \varphi$ = 0.5 800 W LED max. inrush current I_p (20 ms) = 165 A max. inrush current I_p (200 µs) = 800 A |
| Type of contact (k): | 1x µ-contact, NO contact with tungsten pre- make contact |
| Follow-up time: | 15 sec – 16 min, Pulse |
| Switch-on threshold: | 2 – 500 Lux |

Product information

| |
|--|
| Motion detector with 280° detection area and anti-creep zone |
| Mechanical range adjustment |
| Different follow-up time depending on direction of movement |
| Uninterrupted parallel circuit detection of several detectors |
| Manual switching via push-button possible |
| Adjustable ball head |
| Immediate operation using factory settings |
| Additional functions can be set up using the optional remote control. |
| Zero crossing switching |
| Socket compatible to RC-plus (next) and Vario |
| Special socket for external corner mounting included |
| Faulty switching due to animals can be avoided by reducing the sensitivity |
| Easy mounting thanks to plug base |
| Wall, ceiling and corner mounting |
| Factory settings 3 min and 20 lux |

Application examples:

outdoor areas (entrances/access roads), parking areas,
underground car parks, high-bay warehouse



Accessories



RC-Arc extinction kit
Art.No: 10880

Voltage: 230 V AC ±10%
Dimensions: 38 x 12 x 26 mm
Degree / class of protection: IP20 / Class II



Mini-RC-Arc extinction kit
Art.No: 10882

Voltage: 230 V AC ±10%
Dimensions: 50 x 23 x 8 mm
Degree / class of protection: IP20 / Class II



BLE-IR-Adapter
Art.No: 93067

Dimensions: 40 x 55 x 103 mm
Material color: black
Frequency: 2.4 GHz ISM band, GFSK
0.2 dBm + 5.3 dBi = 5.5 dBm



IR-RC
Art.No: 92000

Battery: 3.0 V Lithium CR2032 (inclusive)
Dimensions: 80 x 60 x 8 mm
Material color: -



IR-RC-LD
Art.No: 92649

Battery: 3 x 1.5 V Micro AAA (not included)
Dimensions: 83 x 53 x 17 mm
Material color: -



IR-RC-Mini
Art.No: 92090

Battery: 3.0 V Lithium CR2032 (inclusive)
Dimensions: 57 x 35 x 7 mm
Material color: -



Wire basket BSK (Ø 164 x 143 mm)
Art.No: 92467

Dimensions: Ø 164 x 143 mm
Impact strength: IK09
Housing: coated steel basket



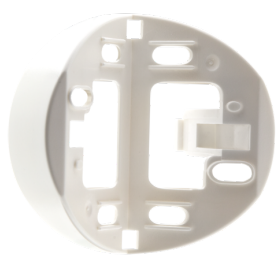
Outside corner socket RC-plus next
Art.No: 97024

Dimensions: Ø 71 x 34 mm
Degree / class of protection: IP54
Housing: polycarbonate, UV-resistant



Outside corner socket RC-plus next
Art.No: 97014

Dimensions: Ø 71 x 34 mm
Degree / class of protection: IP54
Housing: polycarbonate, UV-resistant



Outside corner socket RC-plus next
Art.No: 97004

Dimensions: Ø 71 x 34 mm
Degree / class of protection: IP54
Housing: polycarbonate, UV-resistant



Outside corner socket RC-plus next
Art.No: 97043

Dimensions: Ø 71 x 34 mm
Degree / class of protection: IP54
Housing: polycarbonate, UV-resistant



Inside corner socket RC-plus next
Art.No: 97005

Dimensions: 60 x 61 x 68 mm
Degree / class of protection: IP54
Housing: Housing UV- and shockresistant



Pole holder
Art.No: 93220

Dimensions: 188 x 98 x 134 mm
Housing: stainless steel
Material color: stainless steel



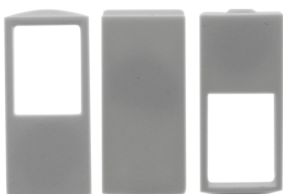
Wall holder
Art.No: 93222

Dimensions: 188 x 98 x 134 mm
Material color: white



Wall holder
Art.No: 93221

Dimensions: 188 x 98 x 134 mm
Material color: anthracite



Blinds RC-plus next
Art.No: 32697

Housing: polycarbonate, UV-resistant
Material color: white