

B.E.G.**LUXOMAT®**

RC-plus next N 230

Prod.No. 93331 EAN: 4007529933310

- Voltage: 110 – 240 V AC 50 / 60 Hz (can also be supplied with other operating voltages ON request)
- Dimensions: 121 x 71 x 85 mm
- Power consumption: approx. 0.5 W

Areas of application

- outdoor areas (entrances/access roads)
- parking areas
- underground car parks
- high-bay warehouse

Order data

Designation	Colour	Art.No
RC-plus next N 230	white	93331

Accessories

Designation	Colour	Art.No
RC-Arc extinction kit	white	10880
Mini-RC-Arc extinction kit		10882
BLE-IR-Adapter	black	93067
IR-RC	-	92000
IR-RC-LD	-	92649
IR-RC-Mini	-	92090
Wire basket BSK (Ø 164 x 143 mm)	white	92467
Outside corner socket RC-plus next	black	97024
Outside corner socket RC-plus next	brown	97014
Outside corner socket RC-plus next	white	97004
Outside corner socket RC-plus next	silver	97043

Inside corner socket RC-plus next	white	97005
Pole holder	stainless steel	93220
Wall holder	white	93222
Wall holder	anthracite	93221
Blinds RC-plus next		32697

Technical data

Voltage:	110 – 240 V AC 50 / 60 Hz (can also be supplied with other operating voltages ON request)
Dimensions:	121 x 71 x 85 mm
Power consumption:	approx. 0.5 W
Detection area:	horizontal 230° (Wall mounting) max. 20 m across max. 6 m towards
Range:	max. 4 m anti-creep protection
Monitored area (tangential movement):	800 m ² / 2.5 m mounting height
Mounting height min./max./recommended:	2 m / 5 m / 2.5 m
Degree / class of protection:	IP54 / Class II
Impact strength:	IK03
Ambient temperature:	-25 °C to +50 °C
Housing:	polycarbonate, UV-resistant
Material color:	white mat, similar to RAL9010

Channel 1 (lighting control)

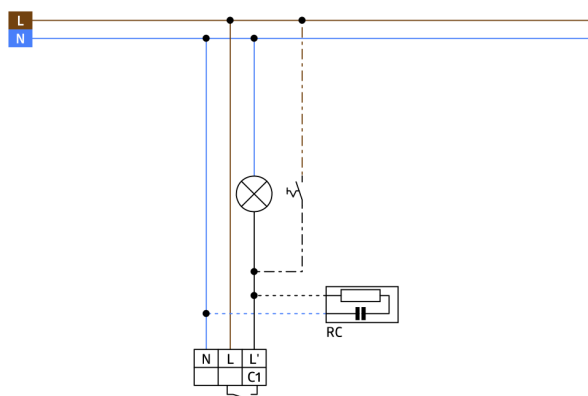
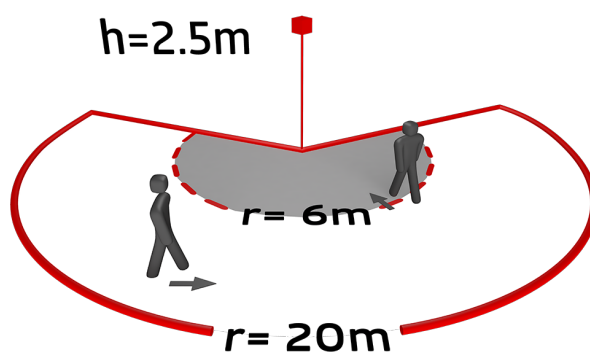
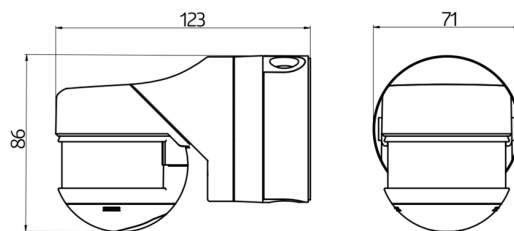
Switching power:	3000 W, cos φ = 1 1500 VA, cos φ = 0.5 800 W LED max. inrush current I_p (20 ms) = 165 A max. inrush current I_p (200 μ s) = 800 A
Type of contact (k):	1x μ -contact, NO contact with tungsten pre-make contact
Follow-up time:	15 sec – 16 min, Pulse
Switch-on threshold:	2 – 500 Lux

Product information

Motion detector with 230° detection area and anti-creep zone
Mechanical range adjustment
Different follow-up time depending on direction of movement
Uninterrupted parallel circuit detection of several detectors
Manual switching via push-button possible
Adjustable ball head
Immediate operation using factory settings
Additional functions can be set up using the optional remote control.
Zero crossing switching
Socket compatible to RC-plus (next) and Vario
Faulty switching due to animals can be avoided by reducing the sensitivity
Easy mounting thanks to plug base
Wall, ceiling and corner mounting
Factory settings 3 min and 20 lux

Application examples:

outdoor areas (entrances/access roads), parking areas, underground car parks, high-bay warehouse



Accessories



RC-Arc extinction kit

Art.No: 10880

Voltage: 230 V AC ±10%
 Dimensions: 38 x 12 x 26 mm
 Degree / class of protection: IP20 / Class II



Mini-RC-Arc extinction kit

Art.No: 10882

Voltage: 230 V AC ±10%
 Dimensions: 50 x 23 x 8 mm
 Degree / class of protection: IP20 / Class II



BLE-IR-Adapter

Art.No: 93067

Dimensions: 40 x 55 x 103 mm
 Material color: black
 Frequency: 2.4 GHz ISM band, GFSK
 0.2 dBm + 5.3 dBi = 5.5 dBm



IR-RC

Art.No: 92000

Battery: 3.0 V Lithium CR2032 (inclusive)
 Dimensions: 80 x 60 x 8 mm
 Material color: -



IR-RC-LD

Art.No: 92649

Battery: 3 x 1.5 V Micro AAA (not included)
 Dimensions: 83 x 53 x 17 mm
 Material color: -



IR-RC-Mini

Art.No: 92090

Battery: 3.0 V Lithium CR2032 (inclusive)
 Dimensions: 57 x 35 x 7 mm
 Material color: -



Wire basket BSK (Ø 164 x 143 mm)

Art.No: 92467

Dimensions: Ø 164 x 143 mm
 Impact strength: IK09
 Housing: coated steel basket



Outside corner socket RC-plus next

Art.No: 97024

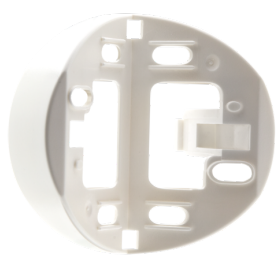
Dimensions: Ø 71 x 34 mm
 Degree / class of protection: IP54
 Housing: polycarbonate, UV-resistant



Outside corner socket RC-plus next

Art.No: 97014

Dimensions: Ø 71 x 34 mm
 Degree / class of protection: IP54
 Housing: polycarbonate, UV-resistant



Outside corner socket RC-plus next
Art.No: 97004

Dimensions: Ø 71 x 34 mm
Degree / class of protection: IP54
Housing: polycarbonate, UV-resistant



Outside corner socket RC-plus next
Art.No: 97043

Dimensions: Ø 71 x 34 mm
Degree / class of protection: IP54
Housing: polycarbonate, UV-resistant



Inside corner socket RC-plus next
Art.No: 97005

Dimensions: 60 x 61 x 68 mm
Degree / class of protection: IP54
Housing: Housing UV- and shockresistant



Pole holder
Art.No: 93220

Dimensions: 188 x 98 x 134 mm
Housing: stainless steel
Material color: stainless steel



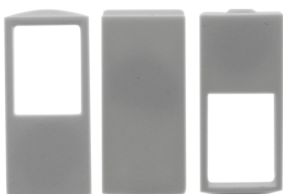
Wall holder
Art.No: 93222

Dimensions: 188 x 98 x 134 mm
Material color: white



Wall holder
Art.No: 93221

Dimensions: 188 x 98 x 134 mm
Material color: anthracite



Blinds RC-plus next
Art.No: 32697

Housing: polycarbonate, UV-resistant
Material color: white