

**B.E.G.****LUXOMAT®**

## PD4-S-C-FC

Prod.No. 92444 EAN: 4007529924448

- Voltage: 110 – 240 V AC 50 / 60 Hz
- Dimensions: Ø 97 x 103 mm
- Power consumption: approx. 0.2 W

### Order data

Designation	Colour	Art.No
PD4-S-C-FC	white	92444

### Accessories

Designation	Colour	Art.No
Wire basket BSK (Ø 200 x 90 mm)	white	92199
Square design frame PD4-FC	pure white	92992
Blinds PD4	transparent	92313

## Technical data

Voltage:	110 – 240 V AC 50 / 60 Hz
Dimensions:	Ø 97 x 103 mm
Power consumption:	approx. 0.2 W
Detection area:	horizontal 360° (Ceiling mounting) max. Ø 40 m across
Range:	max. Ø 20 m towards
Monitored area (tangential movement):	250 m² / 2.5 m mounting height
Mounting height min./max./recommended:	2.4 m / 2.6 m / 2.5 m
Degree / class of protection:	IP20 / Class II
Impact strength:	IK04
Ambient temperature:	-25 °C to +50 °C
Housing:	polycarbonate, UV-resistant
Material color:	white mat, similar to RAL9010
Pulse interval:	2 or 9 sec

## Product information

Slave device detector designed for corridors

For extending the detection area of a Master device

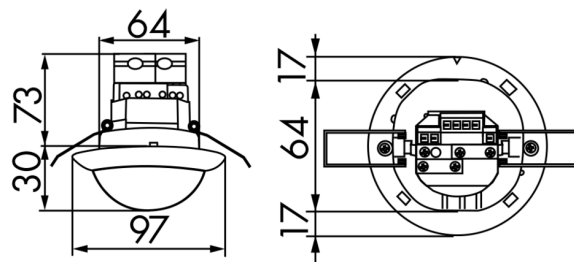
Trigger pulse to master device upon detected movement  
independent of the ambient light level

Compatible with 230 V devices. Concerning exceptions please  
see the respective master device.

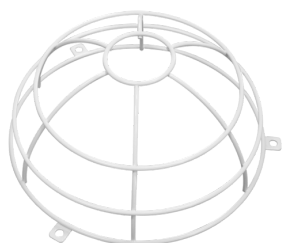
There are markings to ensure correct alignment during  
installation

### Application examples:

corridors/hallways, staircases



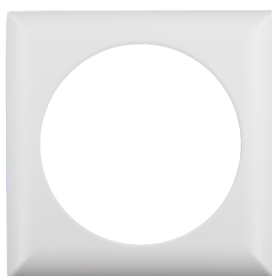
## Accessories



**Wire basket BSK (Ø 200 x 90 mm)**

Art.No: 92199

Dimensions: Ø 200 x 90 mm  
Impact strength: IK09  
Housing: coated steel basket



**Square design frame PD4-FC**

Art.No: 92992

Dimensions: 101 x 101 x 11.8 mm  
Housing: polycarbonate, UV-resistant  
Material color: pure white mat, similar to RAL9010



**Blinds PD4**

Art.No: 92313

Housing: Housing UV- and shockresistant Polycarbonate  
Material color: transparent