

B.E.G.**LUXOMAT®**

PD4-M-2C-FC

Prod.No. 92148 EAN: 4007529921485

- Voltage: 110 – 240 V AC 50 / 60 Hz
- Dimensions: Ø 97 x 103 mm
- Power consumption: approx. 0.5 W

Areas of application

- open-plan offices
- conference rooms
- classrooms/seminar rooms
- entrance halls
- corridors/hallways
- sports halls/ storage rooms

Order data

Designation	Colour	Art.No
PD4-M-2C-FC	white	92148

Accessories

Designation	Colour	Art.No
RC-Arc extinction kit	white	10880
Mini-RC-Arc extinction kit		10882
BLE-IR-Adapter	black	93067
IR-PD-2C	-	92475
IR-PD-Mini	-	92159
Wire basket BSK (Ø 200 x 90 mm)	white	92199
Blinds PD4	transparent	92313

Technical data

Voltage:	110 – 240 V AC 50 / 60 Hz
Dimensions:	Ø 97 x 103 mm
Power consumption:	approx. 0.5 W
Detection area:	horizontal 360° (Ceiling mounting) max. Ø 24 m across max. Ø 8 m towards max. Ø 6.4 m seated
Range:	
Monitored area (tangential movement):	450 m² / 2.5 m mounting height
Mounting height min./max./recommended:	2 m / 10 m / 2.5 m
Degree / class of protection:	IP20 / Class II
Impact strength:	IK04
Ambient temperature:	-25 °C to +50 °C
Housing:	polycarbonate, UV-resistant
Material color:	white mat, similar to RAL9010

Channel 1 (lighting control)

Switching power:	2300 W, $\cos \varphi = 1$ 1150 VA, $\cos \varphi = 0.5$ 800 W LED max. inrush current I_p (20 ms) = 165 A max. inrush current I_p (200 µs) = 800 A
Type of contact (k):	1x µ-contact, NO contact with tungsten pre-make contact
Follow-up time:	15 sec – 30 min, Pulse
Switch-on threshold:	10 – 2000 Lux

Channel 2 (HVAC control potential-free (dry))

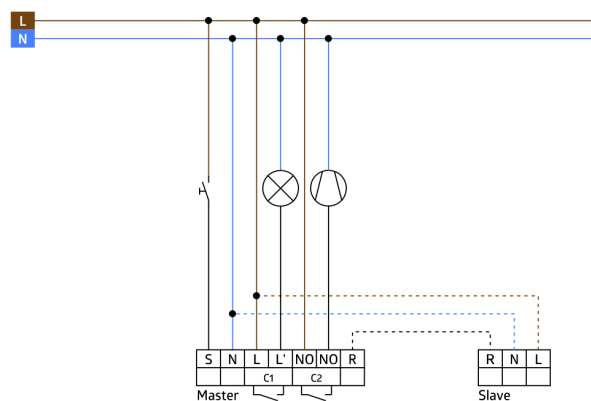
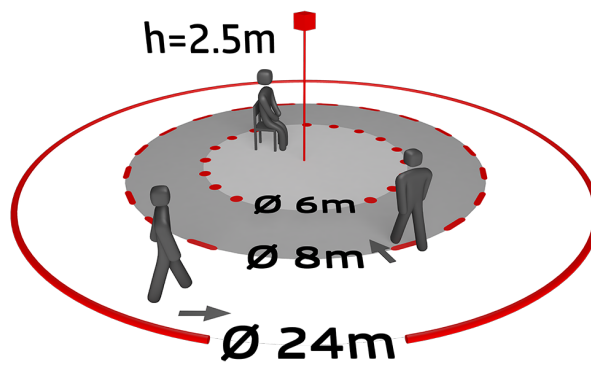
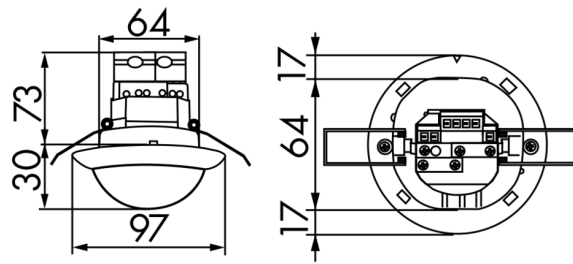
Switching power:	3 A (230 V), $\cos \varphi = 1$
Type of contact:	1x dry NO contact
Follow-up time:	5 min – 120 min, Alarm pulse, Pulse
Light measuring:	Mixed light measuring

Product information

Occupancy detector with extended detection area
One channel for light switching
One additional potential-free (dry) contact for HVAC
Version as master device
Detection area can be extended by using slave devices
Manual switching via push-button possible
Additional functions can be set up using the optional remote control.
Alarm pulse: the detector triggers only when three movements are detected within 9 seconds
Factory settings 10 min and 500 lux (15 min HVAC)
Zero crossing switching

Application examples:

open-plan offices, conference rooms, classrooms/seminar rooms, entrance halls, corridors/hallways, sports halls/ storage rooms



Accessories



RC-Arc extinction kit

Art.No: 10880

Voltage: 230 V AC $\pm 10\%$
 Dimensions: 38 x 12 x 26 mm
 Degree / class of protection: IP20 / Class II



Mini-RC-Arc extinction kit

Art.No: 10882

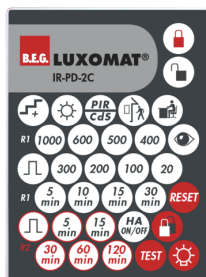
Voltage: 230 V AC $\pm 10\%$
 Dimensions: 50 x 23 x 8 mm
 Degree / class of protection: IP20 / Class II



BLE-IR-Adapter

Art.No: 93067

Dimensions: 40 x 55 x 103 mm
 Material color: black
 Frequency: 2.4 GHz ISM band, GFSK
 0.2 dBm + 5.3 dBi = 5.5 dBm



IR-PD-2C

Art.No: 92475

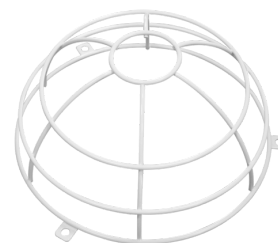
Battery: 3.0 V Lithium CR2032 (inclusive)
 Dimensions: 80 x 60 x 8 mm
 Material color: -



IR-PD-Mini

Art.No: 92159

Battery: 3.0 V Lithium CR2032 (inclusive)
 Dimensions: 57 x 35 x 7 mm
 Material color: -



Wire basket BSK (Ø 200 x 90 mm)

Art.No: 92199

Dimensions: Ø 200 x 90 mm
 Impact strength: IK09
 Housing: coated steel basket



Blinds PD4

Art.No: 92313

Housing: Housing UV- and shockresistant Polycarbonate
 Material color: transparent