

**B.E.G.****LUXOMAT®**

## PD4-M-2C-C-FC

Prod.No. 92143 EAN: 4007529921430

- Voltage: 110 – 240 V AC 50 / 60 Hz
- Dimensions: Ø 97 x 103 mm
- Power consumption: < 0.5 W

### Areas of application

- corridors/hallways

### Order data

Designation	Colour	Art.No
PD4-M-2C-C-FC	white	92143

### Accessories

Designation	Colour	Art.No
RC-Arc extinction kit	white	10880
Mini-RC-Arc extinction kit		10882
BLE-IR-Adapter	black	93067
IR-PD-2C	-	92475
IR-PD-Mini	-	92159
Wire basket BSK (Ø 200 x 90 mm)	white	92199
Square design frame PD4-FC	pure white	92992
Blinds PD4	transparent	92313

## Technical data

Voltage:	110 – 240 V AC 50 / 60 Hz
Dimensions:	Ø 97 x 103 mm
Power consumption:	< 0.5 W
Detection area:	horizontal 360° (Ceiling mounting)
Range:	max. Ø 40 m across max. Ø 20 m towards
Monitored area (tangential movement):	250 m² / 2.5 m mounting height
Mounting height min./max./recommended:	2.4 m / 2.6 m / 2.5 m
Degree / class of protection:	IP20 / Class II
Impact strength:	IK04
Ambient temperature:	-25 °C to +50 °C
Housing:	polycarbonate, UV-resistant
Material color:	white mat, similar to RAL9010

### Channel 1 (lighting control)

Switching power:	2300 W, $\cos \varphi$ = 1 1150 VA, $\cos \varphi$ = 0.5 800 W LED max. inrush current $I_p$ (20 ms) = 165 A max. inrush current $I_p$ (200 µs) = 800 A
Type of contact (k):	1x µ-contact, NO contact with tungsten pre- make contact
Follow-up time:	15 sec – 30 min, Pulse
Switch-on threshold:	10 – 2000 Lux

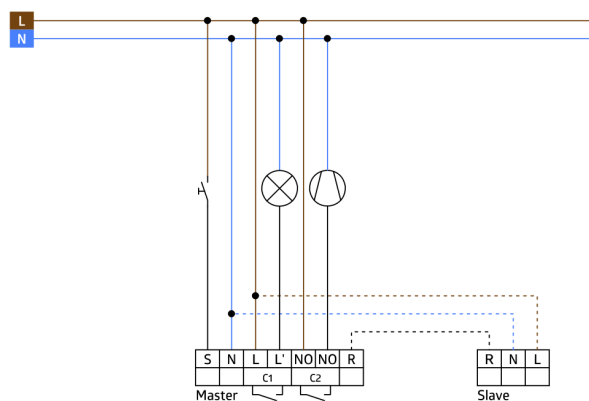
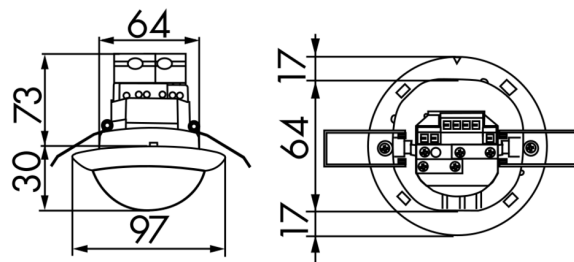
### Channel 2 (HVAC control potential-free (dry))

Switching power:	3 A (230 V), $\cos$ $\varphi$ = 1
Type of contact:	1x µ-contact, dry NO contact
Follow-up time:	5 min – 120 min, Alarm pulse, Pulse
Light measuring:	Mixed light measuring

## Product information

Occupancy detector designed for corridors
One channel for light switching
One additional potential-free (dry) contact for HVAC
Version as master device
Detection area can be extended by using slave devices
Manual switching via push-button possible
Alarm pulse: the detector triggers only when three movements are detected within 9 seconds
Additional functions can be set up using the optional remote control.
There are markings to ensure correct alignment during installation
Factory settings 10 min and 500 lux (15 min HVAC)

### Application examples: corridors/hallways



## Accessories



### RC-Arc extinction kit

Art.No: 10880

Voltage: 230 V AC  $\pm 10\%$   
Dimensions: 38 x 12 x 26 mm  
Degree / class of protection: IP20 / Class II



### Mini-RC-Arc extinction kit

Art.No: 10882

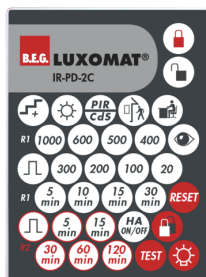
Voltage: 230 V AC  $\pm 10\%$   
Dimensions: 50 x 23 x 8 mm  
Degree / class of protection: IP20 / Class II



### BLE-IR-Adapter

Art.No: 93067

Dimensions: 40 x 55 x 103 mm  
Material color: black  
Frequency: 2.4 GHz ISM band,  
GFSK 0.2 dBm + 5.3 dBi = 5.5 dBm



### IR-PD-2C

Art.No: 92475

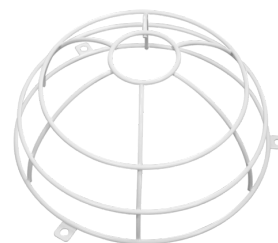
Battery: 3.0 V Lithium CR2032 (inclusive)  
Dimensions: 80 x 60 x 8 mm  
Material color: -



### IR-PD-Mini

Art.No: 92159

Battery: 3.0 V Lithium CR2032 (inclusive)  
Dimensions: 57 x 35 x 7 mm  
Material color: -



### Wire basket BSK (Ø 200 x 90 mm)

Art.No: 92199

Dimensions: Ø 200 x 90 mm  
Impact strength: IK09  
Housing: coated steel basket



### Square design frame PD4-FC

Art.No: 92992

Dimensions: 101 x 101 x 11.8 mm  
Housing: polycarbonate, UV-resistant  
Material color: pure white mat, similar to RAL9010



### Blinds PD4

Art.No: 92313

Housing: Housing UV- and shockresistant Polycarbonate  
Material color: transparent