

B.E.G.**LUXOMAT®**

PD4-M-1C-FC

Prod.No. 92585 EAN: 4007529925858

- Voltage: 110 – 240 V AC 50 / 60 Hz
- Dimensions: Ø 97 x 103 mm
- Power consumption: approx. 0.4 W

Areas of application

- open-plan offices
- conference rooms
- classrooms/seminar rooms
- entrance halls
- corridors/hallways
- toilets
- equipment rooms
- small offices

Order data

Designation	Colour	Art.No
PD4-M-1C-FC	white	92585

Accessories

Designation	Colour	Art.No
RC-Arc extinction kit	white	10880
Mini-RC-Arc extinction kit		10882
BLE-IR-Adapter	black	93067
IR-PD-1C	-	92520
IR-PD-1C-E	-	92077
IR-PD-Mini	-	92159
Wire basket BSK (Ø 200 x 90 mm)	white	92199
Square design frame PD4-FC	pure white	92992
Blinds PD4	transparent	92313

Technical data

Voltage:	110 – 240 V AC 50 / 60 Hz
Dimensions:	Ø 97 x 103 mm
Power consumption:	approx. 0.4 W
Detection area:	horizontal 360° (Ceiling mounting) max. Ø 24 m across max. Ø 8 m towards max. Ø 6.4 m seated
Range:	450 m ² / 2.5 m mounting height
Monitored area (tangential movement):	2 m / 10 m / 2.5 m
Mounting height min./max./recommended:	IP20 / Class II
Degree / class of protection:	IK04
Impact strength:	-25 °C to +50 °C
Ambient temperature:	polycarbonate, UV-resistant
Housing:	white mat, similar to RAL9010
Material color:	

Channel 1 (lighting control, potential-free (dry))

Switching power:	2300 W, cos φ = 1 1150 VA, cos φ = 0.5 800 W LED max. inrush current I_p (20 ms) = 165 A max. inrush current I_p (200 μ s) = 800 A
Type of contact (k):	1x μ -contact, dry NO contact with tungsten pre-make contact
Follow-up time:	15 sec – 30 min, Pulse
Switch-on threshold:	10 – 2000 Lux
Light measuring:	Mixed light measuring

Product information

Occupancy detector with extended detection area

One potential-free (dry) contact

Version as master device

Detection area can be extended by using slave devices

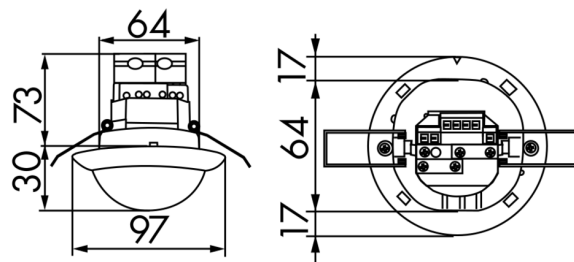
Manual switching via push-button possible

Additional functions can be set up using the optional remote control.

Factory settings 10 min and 500 lux

Application examples:

open-plan offices, conference rooms, classrooms/seminar rooms, entrance halls, corridors/hallways, toilets, equipment rooms, small offices



Accessories



RC-Arc extinction kit

Art.No: 10880

Voltage: 230 V AC ±10%
 Dimensions: 38 x 12 x 26 mm
 Degree / class of protection: IP20 / Class II



Mini-RC-Arc extinction kit

Art.No: 10882

Voltage: 230 V AC ±10%
 Dimensions: 50 x 23 x 8 mm
 Degree / class of protection: IP20 / Class II



BLE-IR-Adapter

Art.No: 93067

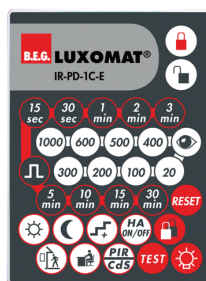
Dimensions: 40 x 55 x 103 mm
 Material color: black
 Frequency: 2.4 GHz ISM band, GFSK
 0.2 dBm + 5.3 dBi = 5.5 dBm



IR-PD-1C

Art.No: 92520

Battery: 3.0 V Lithium CR2032 (inclusive)
 Dimensions: 80 x 60 x 8 mm
 Material color: -



IR-PD-1C-E

Art.No: 92077

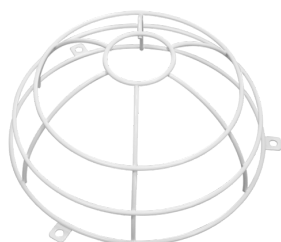
Battery: 3.0 V Lithium CR2032 (inclusive)
 Dimensions: 80 x 60 x 8 mm
 Material color: -



IR-PD-Mini

Art.No: 92159

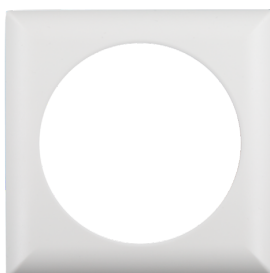
Battery: 3.0 V Lithium CR2032 (inclusive)
 Dimensions: 57 x 35 x 7 mm
 Material color: -



Wire basket BSK (Ø 200 x 90 mm)

Art.No: 92199

Dimensions: Ø 200 x 90 mm
 Impact strength: IK09
 Housing: coated steel basket



Square design frame PD4-FC

Art.No: 92992

Dimensions: 101 x 101 x 11.8 mm
 Housing: polycarbonate, UV-resistant
 Material color: pure white mat, similar to RAL9010



Blinds PD4

Art.No: 92313

Housing: Housing UV- and shockresistant Polycarbonate
 Material color: transparent