

**B.E.G.****LUXOMAT®**

## BL2-PLUS-FC

Prod.No. 93405 EAN: 4007529934058

- Voltage: 110 – 240 V 50 / 60 Hz
- Dimensions: Ø 80 x 61 mm
- Power consumption: 0.3 W

### Order data

Designation	Colour	Art.No
BL2-PLUS-FC	white	93405

### Accessories

Designation	Colour	Art.No
IR-BL-PLUS	-	93406
Mounting set BL2-SM	white	93256
Mounting set BL2-FM	white	93251
Wire basket BSK (Ø 200 x 90 mm)	white	92199
RC-Arc extinction kit	white	10880
Mini-RC-Arc extinction kit		10882

## Technical data

Voltage:	110 – 240 V 50 / 60 Hz
Dimensions:	Ø 80 x 61 mm
Power consumption:	0.3 W
Detection area:	horizontal 360° (Ceiling mounting) max. Ø 8 m across max. Ø 4.8 m towards max. Ø 3.2 m seated
Range:	50 m <sup>2</sup> / 2.5 m mounting height
Monitored area (tangential movement):	2 m / 5 m / 2.5 m
Mounting height min./max./recommended:	
Degree / class of protection:	IP23 / Class II
Ambient temperature:	-25 °C to +50 °C
Housing:	polycarbonate, UV-resistant
Material color:	white
Connections and wires:	0.5 – 1.5 mm <sup>2</sup> for solid conductors
Switching power:	1000 W, cos φ = 1 500 VA, cos φ = 0.5 400 W LED
Type of contact (k):	1x µ-contact, NO contact
Follow-up time:	15 sec – 30 min
Switch-on threshold:	10 – 2000 Lux

## Product information

Remote control-capable occupancy detector for inside use with circular detection area

For mounting in suspended ceilings

One channel for light switching

Manual switching via push-button possible

Basic functions for cost-effective applications

Ready-to-operate thanks to factory settings

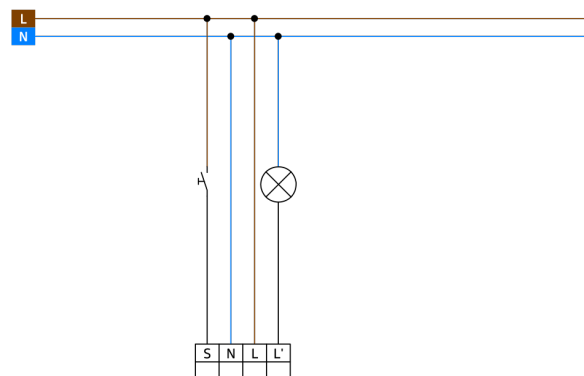
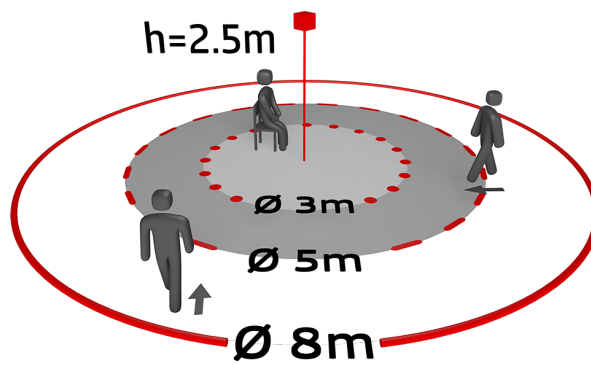
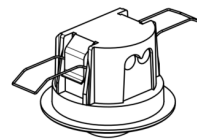
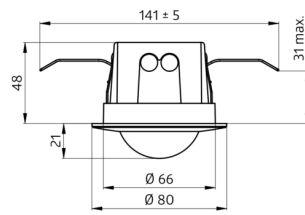
Accessory for surface mounting and flush mounting available

Factory setting: High detection sensitivity, follow-up time 10 min, switch-on threshold 500 lux

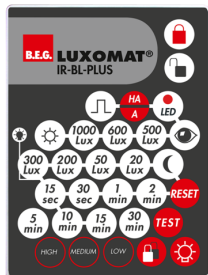
### Easy operation with remote control (required)

#### Typical applications:

Offices, conference rooms, schools, nursery schools, hospitals



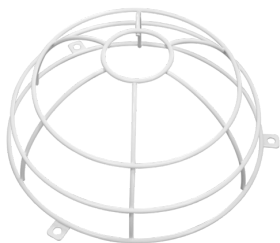
## Accessories



### IR-BL-PLUS

Art.No: 93406

Battery: 3.0 V Lithium CR2032 (inclusive)  
Dimensions: 80 x 60 x 9 mm  
Housing: polycarbonate, UV-resistant



### Wire basket BSK (Ø 200 x 90 mm)

Art.No: 92199

Dimensions: Ø 200 x 90 mm  
Impact strength: IK09  
Housing: coated steel basket



### Mounting set BL2-SM

Art.No: 93256

Dimensions: Ø 109 x 50 mm  
Degree / class of protection: IP23  
Material color: white



### Mounting set BL2-FM

Art.No: 93251

Dimensions: Ø 104 x 19 mm  
Material color: white



### RC-Arc extinction kit

Art.No: 10880

Voltage: 230 V AC  $\pm 10\%$   
Dimensions: 38 x 12 x 26 mm  
Degree / class of protection: IP20 / Class II



### Mini-RC-Arc extinction kit

Art.No: 10882

Voltage: 230 V AC  $\pm 10\%$   
Dimensions: 50 x 23 x 8 mm  
Degree / class of protection: IP20 / Class II