

**B.E.G.****SAFETYLUX®**

## 2DN32/6/3DALI-LED

Prod.No. 1215 EAN: 4007529012152

- Voltage: 230 V AC +/- 10% 50 Hz
- Dimensions: 359 x 90 x 215 mm
- Operation mode: Permanent operation, Wake up mode

### Order data

| Designation       | Colour | Art.No |
|-------------------|--------|--------|
| 2DN32/6/3DALI-LED | white  | 1215   |

### Accessories

| Designation                    | Colour | Art.No |
|--------------------------------|--------|--------|
| BLE-IR-Adapter                 | black  | 93067  |
| IR-Adapter for Smartphones     | black  | 92726  |
| Pictogram two-sided/right-left | green  | 8860   |
| Pictogram DT32-LED down arrow  | green  | 8785   |
| Pictogram DT32-LED right arrow | green  | 8858   |
| Pictogram DT32-LED left arrow  | green  | 8859   |

## Technical data

|                               |   |
|-------------------------------|---|
| Voltage:                      | 230 V AC +/- 10% 50 Hz  |
| Dimensions:                   | 359 x 90 x 215 mm   |
| Operation mode:               | Permanent operation, Wake up mode   |
| Luminous flux / intensity:    | LED circuit board 12 x 0.5 W<br>Colour temperature: 6500 K daylight white |
| Degree / class of protection: | IP54 / Class II   |
| Ambient temperature:          | 0 °C to +35 °C  |
| Housing:                      | Polycarbonate   |
| Material color:               | white, similar to RAL9010   |

### Single-battery luminaire

|                             |                        |
|-----------------------------|------------------------|
| Accu:                       | NiMH 3.6 V<br>4000 mAh |
| Nominal operation duration: | 3 h                    |

### Monitoring

|                     |                          |
|---------------------|--------------------------|
| Local surveillance: | automatic self-test      |
| Central monitoring: | Dali-Bus B.E.G.-DALI-SYS |

## Product information

LED emergency light with single battery

Sturdy plastic case IP54

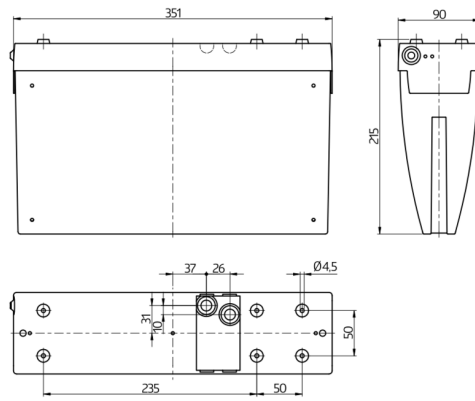
Bright and even illumination

Environmentally friendly NiMH battery with deep discharge protection

Bidirectionally remote control-capable with the IR adapter and the B.E.G. smartphone app

Automatic self-test with a two-colour status LED

Incl. LED illuminant, battery and four pictograms



## Accessories



### BLE-IR-Adapter

Art.No: 93067

Dimensions: 40 x 55 x 103 mm  
Material color: black  
Frequency: 2.4 GHz ISM band, GFSK 0.2 dBm + 5.3 dBi = 5.5 dBm



### IR-Adapter for Smartphones

Art.No: 92726

Dimensions: 47 x 19 x 10 mm  
Degree / class of protection: IP20  
Ambient temperature: -20 °C to +40 °C



### Pictogram two-sided/right-left

Art.No: 8860

Dimensions: 170 x 330 x 1 mm  
Housing: Plastic  
Material color: green



### Pictogram DT32-LED down arrow

Art.No: 8785

Dimensions: 170 x 330 x 1 mm  
Housing: Plastic  
Material color: green



### Pictogram DT32-LED right arrow

Art.No: 8858

Dimensions: 170 x 330 x 1 mm  
Housing: Plastic  
Material color: green



### Pictogram DT32-LED left arrow

Art.No: 8859

Dimensions: 170 x 330 x 1 mm  
Housing: Plastic  
Material color: green