



RC-plus next N KNXs-DX 230

Prod.No. 93527 EAN: 4007529935277

- Voltage: via KNX BUS
- Dimensions: 121 x 71 x 85 mm
- Typ. power input: 17.5 mA

Order data

| Designation | Colour | Art.No |
|----------------------------|--------|--------|
| RC-plus next N KNXs-DX 230 | white | 93527 |

Accessories

| Designation | Colour | Art.No |
|-------------------------------------|-----------------|--------|
| BLE-IR-Adapter | black | 93067 |
| IR-Adapter for Smartphones | black | 92726 |
| IR-PD-KNX | - | 92123 |
| IR-PD-KNX-Mini | - | 93398 |
| Wire basket BSK (Ø 164 x 143 mm) | white | 92467 |
| Inside corner socket RC-plus next | white | 97005 |
| Outside corner socket RC-plus next | white | 97004 |
| Pole holder with weather protection | stainless steel | 93220 |
| Wall holder with weather protection | white | 93222 |
| Wall holder with weather protection | anthracite | 93221 |

Technical data

| | |
|----------------------------------------|---------------------------------------------------------------------------------------------------------|
| Voltage: | via KNX BUS |
| Dimensions: | 121 x 71 x 85 mm |
| Typ. power input: | 17.5 mA |
| Detection area: | horizontal 230° (Wall mounting) max. 20 m across max. 6 m towards max. 4 m creep protection |
| Range: | 800 m ² / 2.5 m mounting height |
| Monitored area (tangential movement): | 2 m / 5 m / 2.5 m |
| Mounting height min./max./recommended: | IP54 / Class III |
| Degree / class of protection: | IK03 |
| Impact strength: | -20 °C to +45 °C |
| Temperature measurement range: | -25 °C to +55 °C |
| Ambient temperature: | polycarbonate, UV-resistant |
| Housing: | white mat, similar to RAL9010 |
| Material color: | 1 |
| Number of light sensors: | 3 |
| Number of PIR sensors: | Yes |
| KNX TP 256: | Yes |
| KNX Secure: | 5 - 100 % / OFF / 1 min - 255 min |
| Orientation light: | 5 - 100 % |
| Night light: | 5 - 2000 Lux |
| Brightness set value: | |

Product information

KNX occupancy detector with integrated KNX bus connector

KNX Secure ready

Integrated downlight with orientation or a night light (RGB) function

HCL/RGB control

Parameterisation from ETS 5 for integration into KNX systems

Individual adaption of detection sensitivity for each PIR sensor

PIR sensors can be deactivated individually

Direction of movement can be identified

Mixed light measurement using internal and remote (optional) light sensors

Intelligent semi-automatic mode, occupancy-independent regulating mode (photoelectric switch), full automatic mode

1 x light output (for regulating or switching), 1 x slave output, 3 x HVAC outputs (separately programmable)

Regulation of up to three lighting groups using offset (external influence possible)

Short presence, self-adjusting follow-up time, corridor function

Various locking functions

Soft-start

Two logic modules

Recall of light scenes

Deactivatable status indicators

The product database for import into the ETS database can be downloaded from the B.E.G. homepage.

Creep protection

Detection area can be extended thanks to master-slave-mode

Extensive optimization options for light measurement

Measured light value is communicated to the bus

Adaption of dimming curve

Bidirectionally remote control-capable with the IR adapter and the B.E.G. smartphone app

PIN code

IR remote control-capable via IR remote control (optionally)

5 button remote control, programmable at choice (accessory)

Programming button (phys. address) can be operated via remote control

HVAC mode (0=automatic, 1=comfort, 2=stand-by, 3=economy, 4=antifreeze/heat protection)

Manual influence via external KNX push buttons possible

Function control (heartbeat, cyclical sending)

Occupancy simulation

Forced switch-off

Intelligent central-off function

Premonition of switch-off

Burn-in function for fluorescent lamps selectable from 1h till 100h

Behaviour upon bus voltage return definable at choice

Variable safety pause after switching off the lights

Application examples:

monitoring a whole side of a building, warehouses, ramps or garages



Accessories



BLE-IR-Adapter
Art.No: 93067

Dimensions: 40 x 55 x 103 mm
Material color: black
Frequency: 2.4 GHz ISM band, GFSK
0.2 dBm + 5.3 dBi = 5.5 dBm



IR-Adapter for Smartphones
Art.No: 92726

Dimensions: 47 x 19 x 10 mm
Degree / class of protection: IP20
Ambient temperature: -20 °C to +40 °C



IR-PD-KNX
Art.No: 92123

Battery: 3.0 V Lithium CR2032 (inclusive)
Dimensions: 80 x 60 x 8 mm
Material color: -



IR-PD-KNX-Mini
Art.No: 93398

Battery: 3.0 V Lithium CR2032 (inclusive)
Dimensions: 57 x 35 x 7 mm
Material color: -



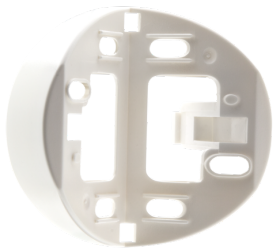
Wire basket BSK (Ø 164 x 143 mm)
Art.No: 92467

Dimensions: Ø 164 x 143 mm
Impact strength: IK09
Housing: coated steel basket



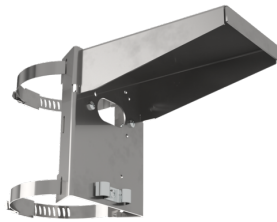
Inside corner socket RC-plus next
Art.No: 97005

Dimensions: 60 x 61 x 68 mm
Degree / class of protection: IP54
Housing: Housing UV- and shockresistant



Outside corner socket RC-plus next
Art.No: 97004

Dimensions: Ø 71 x 34 mm
Degree / class of protection: IP54
Housing: polycarbonate, UV-resistant



Pole holder with weather protection
Art.No: 93220

Dimensions: 188 x 98 x 134 mm
Housing: stainless steel
Material color: stainless steel



Wall holder with weather protection
Art.No: 93222

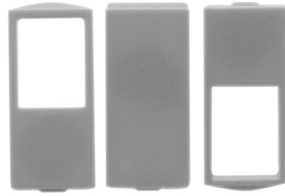
Dimensions: 188 x 98 x 134 mm
Material color: white



Wall holder with weather protection

Art.No: 93221

Dimensions: 188 x 98 x 134 mm
Material color: anthracite



Blinds RC-plus next

Art.No: 32697

Housing: polycarbonate, UV-resistant
Material color: white