

**B.E.G.****LUXOMAT<sup>®</sup>net**

## PICO-KNXs-ST-FC

Prod.No. 93539 EAN: 4007529935390

- Voltage: via KNX BUS
- Dimensions: Ø 33 x 32 mm
- Typ. power input: 12 mA

### Order data

Designation	Colour	Art.No
PICO-KNXs-ST-FC	white	93539

### Accessories

Designation	Colour	Art.No
BLE-IR-Adapter	black	93067
IR-PD-KNX	-	92123
IR-PD-KNX-Mini	-	93398
Mounting set PICO	white	93775
Mounting set PICO	black	93778
Mounting set PICO	traffic white	93777
Mounting set PICO	anthracite	93776
SM socle mounting set IP54 PICO	traffic white	93797
SM socle mounting set IP54 PICO	anthracite	93796
SM socle mounting set IP54 PICO	white	93795
SM socle mounting set IP54 PICO	black	93798

## Technical data

Voltage:	via KNX BUS
Dimensions:	Ø 33 x 32 mm
Typ. power input:	12 mA
Detection area:	horizontal 360° (Ceiling mounting) max. Ø 10 m across max. Ø 6 m towards max. Ø 4 m seated
Range:	78 m <sup>2</sup> / 2.5 m mounting height
Monitored area (tangential movement):	2 m / 5 m / 2.5 m
Mounting height min./max./recommended:	IP20 / Class III
Degree / class of protection:	IK04
Impact strength:	-25 °C to +55 °C
Ambient temperature:	polycarbonate, UV-resistant
Housing:	white mat, similar to RAL9010
Material color:	1
Number of light sensors:	1
Number of PIR sensors:	Yes
KNX TP 256:	Yes
KNX Secure:	5 - 100 % / OFF / 1 min - 255 min
Orientation light:	5 - 100 %
Night light:	5 - 2000 Lux
Brightness set value:	

## Product information

KNX mini occupancy detector with integrated bus connector

KNX Secure ready

Parameterisation from ETS 5 for integration into KNX systems

Individual adaption of the PIR sensor sensitivity

Mixed light measurement using internal and remote (optional) light sensors

Intelligent semi-automatic mode, occupancy-independent regulating mode (photoelectric switch), full automatic mode

1 x light output (for regulating or switching), 1 x slave output, 3 x HVAC outputs (separately programmable)

Regulation of up to three lighting groups using offset (external influence possible)

Short presence, self-adjusting follow-up time, corridor function

Various locking functions

Soft-start

Recall of light scenes

Deactivatable status indicators

The product database for import into the ETS database can be downloaded from the B.E.G. homepage.

Detection area can be extended thanks to master-slave-mode

Extensive optimization options for light measurement

Measured light value is communicated to the bus

Adaption of dimming curve

Bidirectionally remote control-capable with the IR adapter and the B.E.G. smartphone app

PIN code

IR remote control-capable via IR remote control (optionally)

5 button remote control, programmable at choice (accessory)

Programming button (phys. address) can be operated via remote control

HVAC mode (0=automatic, 1=comfort, 2=stand-by, 3=economy, 4=antifreeze/heat protection)

Manual influence via external KNX push buttons possible

Function control (heartbeat, cyclical sending)

Forced switch-off

Intelligent central-off function

Premonition of switch-off

Burn-in function for fluorescent lamps selectable from 1h till 100h

Behaviour upon bus voltage return definable at choice

Variable safety pause after switching off the lights

**Typical applications:**

Offices, conference rooms, schools, nursery schools, hospitals

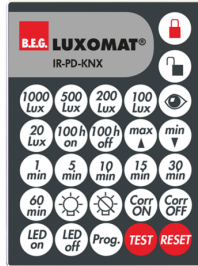


## Accessories



**BLE-IR-Adapter**  
Art.No: 93067

Dimensions: 40 x 55 x 103 mm  
Material color: black  
Frequency: 2.4 GHz ISM band, GFSK  
0.2 dBm + 5.3 dBi = 5.5 dBm



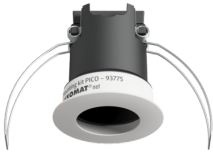
**IR-PD-KNX**  
Art.No: 92123

Battery: 3.0 V Lithium CR2032 (inclusive)  
Dimensions: 80 x 60 x 8 mm  
Material color: -



**IR-PD-KNX-Mini**  
Art.No: 93398

Battery: 3.0 V Lithium CR2032 (inclusive)  
Dimensions: 57 x 35 x 7 mm  
Material color: -



**Mounting set PICO**  
Art.No: 93775

Dimensions: Ø 45 x 50 mm  
Degree / class of protection: IP20  
Housing: polycarbonate, UV-resistant



**Mounting set PICO**  
Art.No: 93778

Dimensions: Ø 45 x 50 mm  
Degree / class of protection: IP20  
Housing: polycarbonate, UV-resistant



**Mounting set PICO**  
Art.No: 93777

Dimensions: Ø 45 x 50 mm  
Degree / class of protection: IP20  
Housing: polycarbonate, UV-resistant



**Mounting set PICO**  
Art.No: 93776

Dimensions: Ø 45 x 50 mm  
Degree / class of protection: IP20  
Housing: polycarbonate, UV-resistant



**SM socle mounting set IP54 PICO**  
Art.No: 93797

Dimensions: Ø 47 x 52 mm  
Degree / class of protection: IP54  
Housing: polycarbonate, UV-resistant



**SM socle mounting set IP54 PICO**  
Art.No: 93796

Dimensions: Ø 47 x 52 mm  
Degree / class of protection: IP54  
Housing: polycarbonate, UV-resistant



**SM socle mounting set IP54 PICO**

Art.No: 93795

Dimensions: Ø 47 x 52 mm

Degree / class of protection: IP54

Housing: polycarbonate, UV-resistant



**SM socle mounting set IP54 PICO**

Art.No: 93798

Dimensions: Ø 47 x 52 mm

Degree / class of protection: IP54

Housing: polycarbonate, UV-resistant