

**B.E.G.****LUXOMAT®**

## PD9-M-2C-FC

Prod.No. 92976 EAN: 4007529929764

- Voltage: 110 - 240 V AC 50 / 60 Hz
- Dimensions: Sensor head: Ø 45 x 28 mm,  
Power supply: 165 x 24 x 24 mm
- Power consumption: approx. 0.8 W

### Areas of application

- entrance halls
- corridors/hallways
- small offices

### Order data

Designation	Colour	Art.No
PD9-M-2C-FC	white	92976

### Accessories

Designation	Colour	Art.No
BLE-IR-Adapter	black	93067
IR-PD-2C	-	92475
IR-PD-Mini	-	92159
RC-Arc extinction kit	white	10880
Mini-RC-Arc extinction kit		10882
Cover IP65 for Sensor head PD9	transparent	92958
Cover ring PD9 Ø 36 mm	anthracite	92235
Cover ring PD9 Ø 36 mm	white	92238
Cover ring PD9 Ø 36 mm	silver	92237
Cover ring PD9 Ø 45 mm	white	92327
Cover ring PD9 Ø 45 mm	silver	92346
Square design frame PD9-FC	pure white	92993

## Technical data

Voltage:	110 – 240 V AC 50 / 60 Hz
Dimensions:	Sensor head: Ø 45 x 28 mm, Power supply: 165 x 24 x 24 mm
Power consumption:	approx. 0.8 W
Detection area:	horizontal 360° (Ceiling mounting) max. Ø 10 m across
Range:	max. Ø 6 m towards max. Ø 4 m seated
Monitored area (tangential movement):	78 m <sup>2</sup> / 2.5 m mounting height
Mounting height min./max./recommended:	2 m / 5 m / 2.5 m
Degree / class of protection:	IP20 / Class II
Impact strength:	IK03
Ambient temperature:	-25 °C to +50 °C
Housing:	polycarbonate, UV-resistant
Material color:	white mat, similar to RAL9010
Cable length:	45 cm, screened

### Channel 1 (lighting control)

Switching power:	2300 W, $\cos \varphi$ = 1 1150 VA, $\cos \varphi$ = 0.5 800 W LED max. inrush current $I_p$ (20 ms) = 165 A max. inrush current $I_p$ (200 $\mu$ s) = 800 A
Type of contact (k):	1x $\mu$ -contact, NO contact with tungsten pre- make contact
Follow-up time:	5 min – 30 min, Pulse
Switch-on threshold:	20 – 1000 Lux

### Channel 2 (HVAC control potential-free (dry))

Switching power:	3 A (230 V), $\cos$ $\varphi$ = 1
------------------	--------------------------------------

## Product information

Mini occupancy detector for light switching with additional potential-free (dry) contact

Version as master device

Detection area can be extended by using slave devices

### Easy operation with remote control (required)

Manual switching via push-button possible

Power supply passes through the hole in the ceiling for the detector (34 mm Ø)

Spring clips for quick and easy installation in suspended ceilings and light fittings

Includes 45 mm cover ring and blinds

Factory settings 10 min and 500 lux (15 min HVAC)

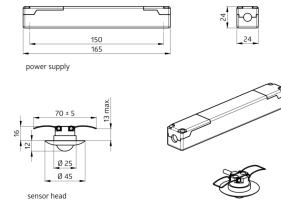
### Application examples:

entrance halls, corridors/hallways, small offices

Type of contact: 1x  $\mu$ -contact, dry NO contact

Follow-up time: 5 min – 120 min, Pulse

Light measuring: Mixed light measuring



## Accessories



**BLE-IR-Adapter**  
Art.No: 93067

Dimensions: 40 x 55 x 103 mm  
Material color: black  
Frequency: 2.4 GHz ISM band, GFSK  
0.2 dBm + 5.3 dBi = 5.5 dBm



**RC-Arc extinction kit**  
Art.No: 10880

Voltage: 230 V AC  $\pm 10\%$   
Dimensions: 38 x 12 x 26 mm  
Degree / class of protection: IP20 / Class II



**Cover ring PD9 Ø 36 mm**  
Art.No: 92235

Dimensions: Ø 36 mm  
Housing: polycarbonate, UV-resistant  
Material color: anthracite glossy



**IR-PD-2C**  
Art.No: 92475

Battery: 3.0 V Lithium CR2032 (inclusive)  
Dimensions: 80 x 60 x 8 mm  
Material color: -



**Mini-RC-Arc extinction kit**  
Art.No: 10882

Voltage: 230 V AC  $\pm 10\%$   
Dimensions: 50 x 23 x 8 mm  
Degree / class of protection: IP20 / Class II



**Cover ring PD9 Ø 36 mm**  
Art.No: 92238

Dimensions: Ø 36 mm  
Housing: polycarbonate, UV-resistant  
Material color: white glossy



**IR-PD-Mini**  
Art.No: 92159

Battery: 3.0 V Lithium CR2032 (inclusive)  
Dimensions: 57 x 35 x 7 mm  
Material color: -



**Cover IP65 for Sensor head PD9**  
Art.No: 92958

Degree / class of protection: IP65  
Housing: UV-resistant  
Material color: transparent



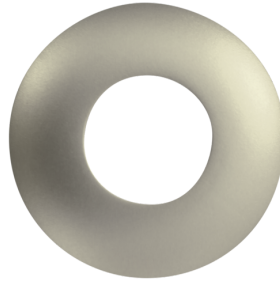
**Cover ring PD9 Ø 36 mm**  
Art.No: 92237

Dimensions: Ø 36 mm  
Housing: polycarbonate, UV-resistant  
Material color: silver glossy



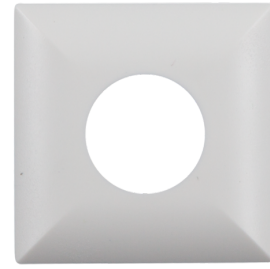
**Cover ring PD9 Ø 45 mm**  
Art.No: 92327

Dimensions: Ø 45 mm  
Material color: white mat



**Cover ring PD9 Ø 45 mm**  
Art.No: 92346

Dimensions: Ø 45 mm  
Material color: silver mat



**Square design frame PD9-FC**  
Art.No: 92993

Dimensions: 45 x 45 x 2.6 mm  
Housing: polycarbonate, UV-resistant  
Material color: pure white mat, similar  
to RAL9010