



LC-plus-DALI-SYS 280 Set 93308-93220

- Voltage: via DALI Bus, max. 22.5 V DC
- Dimensions: 110 x 68 x 78 mm
- Settings: B.E.G. PC Tools, B.E.G. DALI-SYS router

Order data

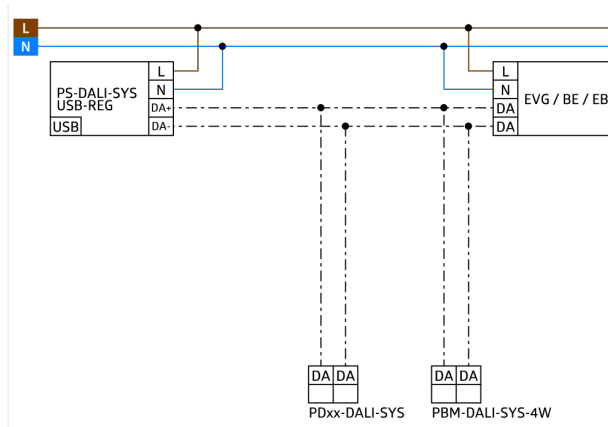
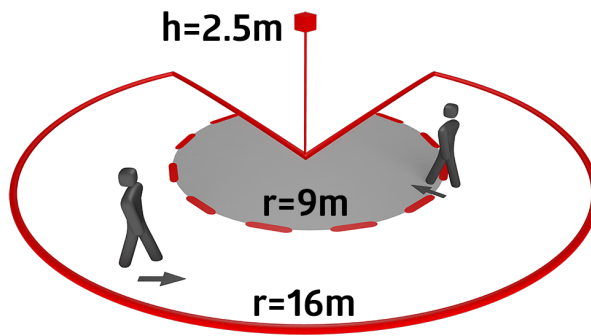
Designation	Colour	Art.No
LC-plus-DALI-SYS 280	white	93308
Pole holder with weather protection	stainless steel	93220

Technical data

Voltage:	via DALI Bus, max. 22.5 V DC
Dimensions:	110 x 68 x 78 mm
Settings:	B.E.G. PC Tools, B.E.G. DALI-SYS router
Typ. power input:	7 mA
Detection area:	horizontal 280° (Wall mounting) max. 16 m across
Range:	max. 9 m towards
Monitored area (tangential movement):	620 m ² / 2.5 m mounting height
Mounting height min./max./recommended:	2 m / 3 m / 2.5 m
Degree / class of protection:	IP54 / Class II
Impact strength:	IK02
Ambient temperature:	-25 °C to +50 °C
Housing:	polycarbonate, UV-resistant
Material color:	white mat, similar to RAL9010
Follow-up time:	1 sec - 120 min
Orientation light:	5 - 100 % / 1 s - 120 min
Brightness set value:	10 - 2500 Lux

Product information

Set : LC-plus-DALI-SYS 280 + Pole holder with
weather protection stainless steel



Set items

To receive the bundle according to the technical specification, please order the items listed.



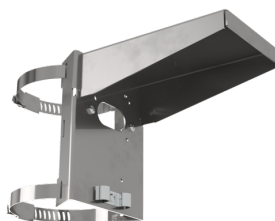
LC-plus-DALI-SYS 280

Art.No: 93308

Voltage: via DALI Bus, max. 22.5 V DC

Dimensions: 110 x 68 x 78 mm

Settings: B.E.G. PC Tools, B.E.G. DALI-SYS router



Pole holder with weather protection

Art.No: 93220

Dimensions: 188 x 98 x 134 mm

Housing: stainless steel

Material color: stainless steel