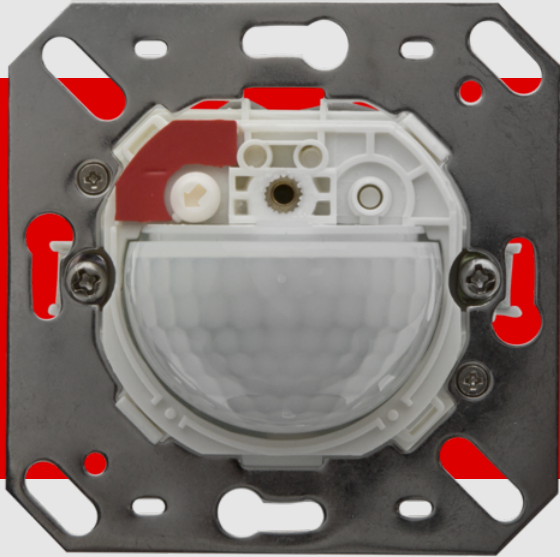


B.E.G.**LUXOMAT®**

Indoor 180-S covering not included Set 92660-92630

- Voltage: 110 - 240 V AC 50 / 60 Hz
- Dimensions: covering not included 70 x 70 x 61 mm
- Power consumption: approx. 0.2 W

Order data

Designation	Colour	Art.No
Indoor 180-S covering not included	-	92660
Frame IP20 Indoor 180	pure white	92630

Technical data

Voltage:	110 - 240 V AC 50 / 60 Hz
Dimensions:	covering not included 70 x 70 x 61 mm
Power consumption:	approx. 0.2 W
Detection area:	horizontal 180° (Wall mounting) max. 10 m across
Range:	max. 3 m towards
Monitored area (tangential movement):	150 m ² / 1.1 m mounting height
Mounting height min./max./recommended:	1 m / 2.2 m / 1.1 m
Degree / class of protection:	IP20 / Class II
Impact strength:	IK05
Ambient temperature:	-25 °C to +50 °C
Housing:	polycarbonate, UV-resistant
Material color:	pure white mat, similar to RAL9010 (92630)
Pulse interval:	2 or 9 sec

Product information

Set : Indoor 180-S covering not included + Frame
IP20 Indoor 180 pure white mat, similar to RAL9010

Slave device

For extending the detection area of a Master device

Compatible with 230 V devices. Concerning exceptions please
see the respective master device.

Available with covering (centre plate dimensions 60 x 60 mm)
or without covering for use with covering (centre plate
dimensions 50 x 50 mm) in 5 different colours

In combination with centre plates usable with current frame
systems of various manufacturers

B.E.G. frames and centre plates for combination with other
frame systems available



Set items

To receive the bundle according to the technical specification, please order the items listed.



Indoor 180-S covering not included

Art.No: 92660

Voltage: 110 – 240 V AC 50 / 60 Hz

Dimensions: covering not included 70 x 70 x 61 mm

Power consumption: approx. 0.2 W



Frame IP20 Indoor 180

Art.No: 92630

Dimensions: 86 x 86 mm

Degree / class of protection: IP20

Housing: polycarbonate, UV-resistant