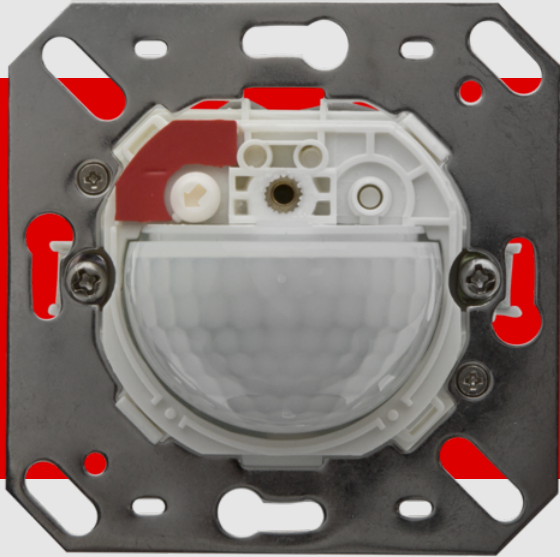


**B.E.G.****LUXOMAT®**

## Indoor 180-S covering not included Set 92660-92139-92141

Slave PIR wall-mounted motion detector with 180° detection angle and a range of up to 10 m (150 m<sup>2</sup>), for expanding the detection zone

### Order data

Designation	Colour	Art.No
Indoor 180-S covering not included	-	92660
Frame IP54 Indoor 180	pure white	92139
Surface mounting socket Indoor 180	pure white	92141

## Technical data

Voltage:	110 - 240 V AC 50 / 60 Hz
Dimensions:	<b>88 x 88 x 42 mm (92141)</b>
Power consumption:	approx. 0.2 W
Detection area:	horizontal 180° (Wall mounting) max. 10 m across
Range:	max. 3 m towards
Monitored area (tangential movement):	150 m <sup>2</sup> / 1.1 m mounting height
Mounting height min./max./recommended:	1 m / 2.2 m / 1.1 m
Degree / class of protection:	<b>IP54 (92141)</b>
Impact strength:	IK05
Ambient temperature:	-25 °C to +50 °C
Housing:	polycarbonate, UV-resistant
Material color:	<b>pure white mat, similar to RAL9010 (92139)</b>
Pulse interval:	2 or 9 sec

## Product information

Set : Indoor 180-S covering not included + Frame  
IP54 Indoor 180 pure white mat, similar to RAL9010  
+ Surface mounting socket Indoor 180 pure white  
mat, similar to RAL9010

Slave device

For extending the detection area of a Master device

Compatible with 230 V devices. Concerning exceptions please  
see the respective master device.

Available with covering (centre plate dimensions 60 x 60 mm)  
or without covering for use with covering (centre plate  
dimensions 50 x 50 mm) in 5 different colours

In combination with centre plates usable with current frame  
systems of various manufacturers

B.E.G. frames and centre plates for combination with other  
frame systems available



## Set items

To receive the bundle according to the technical specification, please order the items listed.



**Indoor 180-S covering not included**  
Art.No: 92660

Voltage: 110 – 240 V AC 50 / 60 Hz  
Dimensions: covering not included 70 x 70 x 61 mm  
Power consumption: approx. 0.2 W



**Frame IP54 Indoor 180**  
Art.No: 92139

Dimensions: 87 x 87 mm  
Degree / class of protection: IP54  
Housing: polycarbonate, UV-resistant



**Surface mounting socket Indoor 180**  
Art.No: 92141

Dimensions: 88 x 88 x 42 mm  
Degree / class of protection: IP54  
Impact strength: IK05