

## Indoor 140-L-KNX-DX covering not included

Prod.No. 93393 EAN: 4007529933938

- Voltage: via KNX BUS
- Dimensions: (covering not included) 70 x 70 x 51 mm
- Typ. power input: 24 mA

### Order data

Designation	Colour	Art.No
Indoor 140-L-KNX-DX covering not included	-	93393

### Accessories

Designation	Colour	Art.No
BLE-IR-Adapter	black	93067
IR-PD-KNX	-	92123
IR-PD-KNX-Mini	-	93398
Frame IP20 Indoor 140-L	oyster white	94344
Frame IP20 Indoor 140-L	pure white	94343
Frame IP20 Indoor 140-L	pure white	94342
Frame IP20 Indoor 140-L	anthracite	94341
Central plate Indoor 140 45x45	pure white	38946
Central plate Indoor 140 55x55	pure white	94346
Central plate Indoor 140 63x63	pure white	94345

## Technical data

Voltage:	via KNX BUS (covering not included) 70 x 70 x 51 mm
Dimensions:	
Typ. power input:	24 mA
Detection area:	horizontal 120° (Wall mounting) max. 8 m across max. 3 m towards
Range:	
Monitored area (tangential movement):	67 m <sup>2</sup> / 1.1 m mounting height
Mounting height min./max./recommended:	1 m / 1.2 m / 1.1 m
Degree / class of protection:	IP20 / Class III
Impact strength:	IK07
Temperature measurement range:	-5 °C to +45 °C
Ambient temperature:	-25 °C to +55 °C
Housing:	polycarbonate, UV-resistant
Material color:	-
Number of light sensors:	1
Number of PIR sensors:	1
KNX TP 256:	Yes
Orientation light:	5 - 100 % / OFF / 1 min - 255 min
Night light:	5 - 100 %
Brightness set value:	5 - 2000 Lux

## Product information

KNX occupancy detector with integrated KNX bus coupler, especially for installation in walls

1 x light output (for regulating or switching), 1 x slave output, 3 x HVAC outputs (separately programmable)

Intelligent semi-automatic mode, occupancy-independent regulating mode (photoelectric switch), full automatic mode

Two logic modules

Individual adaption of the PIR sensor sensitivity

Measuring of mixed light thanks to internal light sensor

Temperature sensor

Various locking functions

Status LEDs can be activated / deactivated

Programming button (phys. address) can be operated via remote control

Regulation/switching of three light groups via offset (external influence possible)

Short presence, self-adjusting follow-up time, corridor function

Recall of light scenes

Integrated downlight with the function of an orientation or a night light

Integrated pushbutton (two functions programmable)

HVAC mode (0=automatic, 1=comfort, 2=stand-by, 3=economy, 4=antifreeze/heat protection)

5 button remote control, programmable at choice (accessory)

Occupancy simulation

Detection area can be extended thanks to master-slave-mode

Extensive optimization options for light measurement

Measured light value is communicated to the bus

IR remote control-capable via IR remote control (optionally)

PIN code

Manual influence via external KNX push buttons possible

Function control (heartbeat, cyclical sending)

Forced switch-off

Intelligent central-off function

Premonition of switch-off

Behaviour upon bus voltage return definable at choice

Variable safety pause after switching off the lights

Settings ex ETS 4 for integration in KNX systems

The product database for import into the ETS database can be downloaded from the B.E.G. homepage.

Adaption of dimming curve

Determination of the reflection factor, e.g. on a desk, with the optional BLE-IR-Adapter

Burn-in function for fluorescent lamps selectable from 1h till 100h

Soft-start

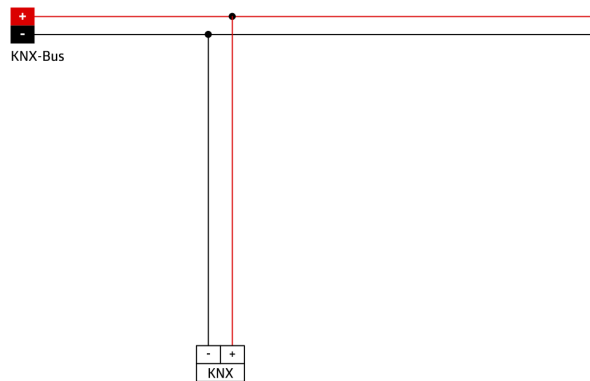
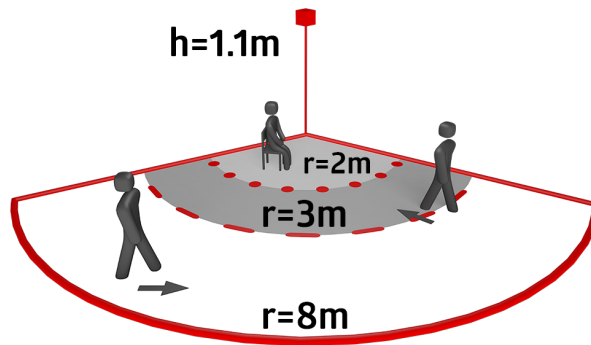
In combination with centre plates usable with current frame systems of various manufacturers

B.E.G. frames and centre plates for combination with other frame systems available

Please order cover frame separately, available in various colours

**Application examples:**

corridors/hallways, underground car parks, entrance halls, staircases, toilets, equipment rooms



## Accessories



**BLE-IR-Adapter**  
Art.No: 93067

Dimensions: 40 x 55 x 103 mm  
Material color: black  
Frequency: 2.4 GHz ISM band, GFSK 0.2 dBm + 5.3 dBi = 5.5 dBm



**Frame IP20 Indoor 140-L**  
Art.No: 94344

Dimensions: 88 x 88 mm, Inside dimension: 63 x 63 mm  
Degree / class of protection: IP20 / Class II  
Material color: oyster white mat, similar to RAL1013



**Frame IP20 Indoor 140-L**  
Art.No: 94341

Dimensions: 88 x 88 mm, Inside dimension: 63 x 63 mm  
Degree / class of protection: IP20 / Class II  
Material color: anthracite mat, similar to RAL7021



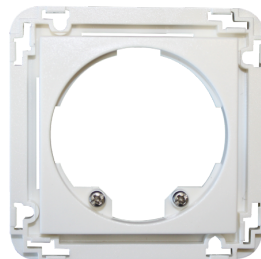
**IR-PD-KNX**  
Art.No: 92123

Battery: 3.0 V Lithium CR2032 (inclusive)  
Dimensions: 80 x 60 x 8 mm  
Material color: -



**Frame IP20 Indoor 140-L**  
Art.No: 94343

Dimensions: 88 x 88 mm, Inside dimension: 63 x 63 mm  
Degree / class of protection: IP20 / Class II  
Material color: pure white mat, similar to RAL9010



**Central plate Indoor 140 45x45**  
Art.No: 38946

Dimensions: 45 x 45 mm  
Degree / class of protection: IP20 / Class II  
Material color: pure white glossy, similar to RAL9010



**IR-PD-KNX-Mini**  
Art.No: 93398

Battery: 3.0 V Lithium CR2032 (inclusive)  
Dimensions: 57 x 35 x 7 mm  
Material color: -



**Frame IP20 Indoor 140-L**  
Art.No: 94342

Dimensions: 88 x 88 mm, Inside dimension: 63 x 63 mm  
Degree / class of protection: IP20 / Class II  
Material color: pure white glossy, similar to RAL9010



**Central plate Indoor 140 55x55**  
Art.No: 94346

Dimensions: 55 x 55 mm  
Housing: polycarbonate, UV-resistant  
Material color: pure white glossy, similar to RAL9010



**Central plate Indoor 140 63x63**

Art.No: 94345

Dimensions: 63 x 63 mm

Housing: polycarbonate, UV-resistant

Material color: pure white glossy, similar to  
RAL9010