



RC-plus next N 230 KNXs-DX 230 Set 93527-97005

- Voltage: via KNX BUS
- Dimensions: **121 x 71 x 85 mm + 60 x 61 x 68 mm (97005)**
- Typ. power input: 12 mA

Order data

Designation	Colour	Art.No
RC-plus next N 230 KNXs-DX 230	white	93527
Inside corner socket RC-plus next	white	97005

Technical data

Voltage:	via KNX BUS
Dimensions:	121 x 71 x 85 mm + 60 x 61 x 68 mm (97005)
Typ. power input:	12 mA
Detection area:	horizontal 230° (Wall mounting) max. 20 m across max. 6 m towards
Range:	max. 4 m anti-creep protection
Monitored area (tangential movement):	800 m² / 2.5 m mounting height
Mounting height min./max./recommended:	2 m / 5 m / 2.5 m
Degree / class of protection:	IP54 / Class III
Impact strength:	IK03
Temperature measurement range:	-20 °C to +45 °C
Ambient temperature:	-25 °C to +55 °C
Housing:	polycarbonate, UV-resistant
Number of light sensors:	1
Material color:	white mat, similar to RAL9010
Number of PIR sensors:	3
KNX TP 256:	Yes
KNX Secure:	Yes
Orientation light:	5 – 100 % / OFF / 1 min – 255 min
Night light:	5 – 100 %
Brightness set value:	5 – 2000 Lux

Product information

Set : RC-plus next N 230 KNXs-DX 230 + Inside corner socket RC-plus next white mat, similar to RAL9010

KNX occupancy detector with integrated KNX bus connector

KNX Secure ready

Integrated downlight with orientation or a night light (RGB) function

HCL/RGB control

Parameterisation from ETS 5 for integration into KNX systems

Individual adaption of detection sensitivity for each PIR sensor

PIR sensors can be deactivated individually

Direction of movement can be identified

Mixed light measurement using internal and remote (optional) light sensors

Intelligent semi-automatic mode, occupancy-independent regulating mode (photoelectric switch), full automatic mode

1 x Light (for regulating or switching), 1 x slave output, 3 separate HVAC-blocs

Regulation of up to three lighting groups using offset (external influence possible)

Short presence, self-adjusting follow-up time, corridor function

Various locking functions

Soft-start

Two logic modules

Recall of light scenes

Deactivatable status indicators

The product database for import into the ETS database can be downloaded from the B.E.G. homepage.

Anti-creep zone

Detection area can be extended thanks to master-slave-mode

Extensive optimization options for light measurement

Measured light value is communicated to the bus

Adaption of dimming curve

Bidirectionally remote control-capable with the IR adapter and the B.E.G. smartphone app

PIN code

IR remote control-capable via IR remote control (optionally)

5 button remote control, programmable at choice (accessory)

Programming button (phys. address) can be operated via remote control

HVAC mode (0=automatic, 1=comfort, 2=stand-by, 3=economy, 4=antifreeze/heat protection)

Manual influence via external KNX push buttons possible

Function control (heartbeat, cyclical sending)

Occupancy simulation

Forced switch-off

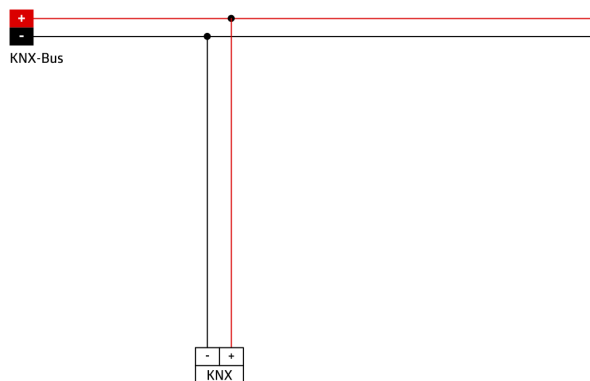
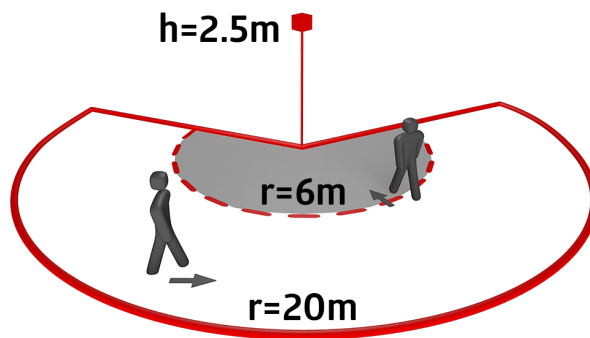
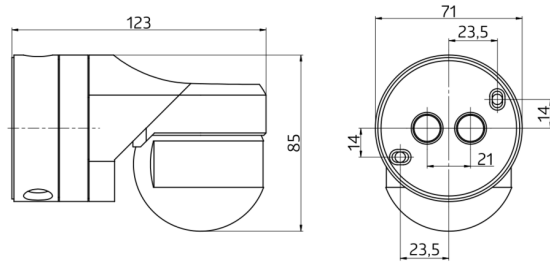
Intelligent central-off function

Premonition of switch-off

Burn-in function for fluorescent lamps selectable from 1h till 100h

Behaviour upon bus voltage return definable at choice

Variable safety pause after switching off the lights



Set items

To receive the bundle according to the technical specification, please order the items listed.



RC-plus next N 230 KNXs-DX 230

Art.No: 93527

Voltage: via KNX BUS

Dimensions: 121 x 71 x 85 mm

Typ. power input: 12 mA



Inside corner socket RC-plus next

Art.No: 97005

Dimensions: 60 x 61 x 68 mm

Degree / class of protection: IP54

Housing: Housing UV- and shockresistant