

**B.E.G.****LUXOMAT®**

## PD9-M-DACO-FC DALI-2 Set 93470-92993

- Voltage: 230 V AC  $\pm 10\%$  50 Hz
- Dimensions: **Sensor head:  $\varnothing 45 \times 28$  mm, Power supply:  $165 \times 24 \times 24$  mm +  $45 \times 45 \times 2.6$  mm (92993)**
- Power consumption: approx. 2 W

### Areas of application

- entrance halls
- corridors/hallways
- small offices

### Order data

Designation	Colour	Art.No
PD9-M-DACO-FC DALI-2	white	93470
Square design frame PD9-FC	pure white	92993

## Technical data

Voltage:	230 V AC $\pm$ 10% 50 Hz
Dimensions:	<b>Sensor head:</b> <b>Ø 45 x 28 mm,</b> <b>Power supply:</b> <b>165 x 24 x 24</b> <b>mm + 45 x 45</b> <b>x 2.6 mm</b> <b>(92993)</b>
Power consumption:	approx. 2 W
Slave devices:	up to 8
Detection area:	horizontal 360° (Ceiling mounting)
Range:	max. Ø 10 m across max. Ø 6 m towards max. Ø 4 m seated
Monitored area (tangential movement):	78 m <sup>2</sup> / 2.5 m mounting height
Mounting height min./max./recommended:	2 m / 5 m / 2.5 m
Degree / class of protection:	IP20 / Class II
Impact strength:	IK03
Ambient temperature:	-25 °C to +50 °C
Housing:	polycarbonate, UV-resistant
Material color:	<b>pure white</b> <b>mat, similar</b> <b>to RAL9010</b> <b>(92993)</b>
Cable length:	50 cm
<b>Channel 1 (lighting control)</b>	
DALI output:	80 mA (guaranteed), 125 mA (max.), shut down mechanism
Supported control gear:	DT0, DT5, DT6, DT7
Supported control devices:	- (single master)
Follow-up time:	1 min - 150 min
Orientation light:	10 - 30 % / OFF / 5 min - 60 min / $\infty$
Brightness set value:	10 - 2500 Lux
Light measuring:	Mixed light measuring

## Product information

Set : PD9-M-DACO-FC DALI-2 + Square design frame  
PD9-FC pure white mat, similar to RAL9010

Mini occupancy detector with integrated DALI application  
controller for energy-efficient lighting control

DALI-2 certified product

Integrated DALI power supply

DALI interface for controlling digital, dimmable ECGs in  
broadcast mode

Manual switching or dimming via conventional pushbuttons

Bidirectional IR communication enables fast integration into  
the project management function of the B.E.G. One app

Complete range of functions can only be activated using the  
BLE-IR-Adapter and a compatible Smartphone or Tablet  
(Android, iOS).

Semi-automatic, full automatic, presence-independent or  
light-independent mode adjustable

Adjustable regulation dynamics (minimum and maximum  
values)

Adjustable speed and delay of the regulation

Single master version, not networkable

Detection area can be extended by using slave devices

Measuring of mixed light thanks to internal light sensor

DALI output power can be increased with accessories

Integrated daylight harvesting circuit (or switch output)

Adjustable switch-on value

Last value - Reminder function for switch-on value

Adjustable brightness set value and reflection factor

Indication of the current light sensor value in the B.E.G. One  
App

Self-check and display of device errors in the B.E.G. One App

Status LEDs can be activated / deactivated

PIN code

Corridor function - Deactivates the possibility to switch off the  
light via the push-button

Number of DALI participants can be determined quickly and  
reliably via the B.E.G. Online DALI Line Planner

Software is backwards compatible with the first generation  
(except DSI, double lock and corridor function)

Factory setting 10 min follow-up time and 500 lux brightness set value

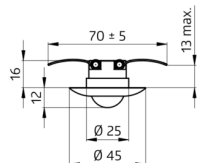
Spring clips for quick and easy installation in suspended ceilings and light fittings

Includes 45 mm cover ring and blinds

Power supply passes through the hole in the ceiling for the detector (34 mm Ø)



power supply



sensor head



## Set items

To receive the bundle according to the technical specification, please order the items listed.



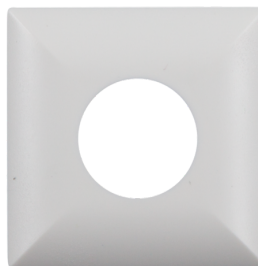
### **PD9-M-DACO-FC DALI-2**

Art.No: 93470

Voltage: 230 V AC  $\pm 10\%$  50 Hz

Dimensions: Sensor head:  $\varnothing$  45 x 28 mm, Power supply: 165 x 24 x 24 mm

Power consumption: approx. 2 W



### **Square design frame PD9-FC**

Art.No: 92993

Dimensions: 45 x 45 x 2.6 mm

Housing: polycarbonate, UV-resistant

Material color: pure white mat, similar to RAL9010