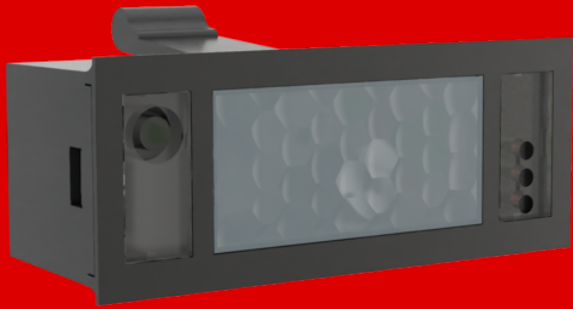


B.E.G.**LUXOMAT[®]net**

PD5N-LAMELLA-KNXs-DX BB

Prod.No. 93509 EAN: 4007529935093

- Voltage: via KNX BUS
- Dimensions: 57 x 23 x 43 mm
- Typ. power input: 12 mA

Order data

| Designation | Colour | Art.No |
|-------------------------|--------|--------|
| PD5N-LAMELLA-KNXs-DX BB | black | 93509 |

Accessories

| Designation | Colour | Art.No |
|----------------------------|--------|--------|
| BLE-IR-Adapter | black | 93067 |
| IR-Adapter for Smartphones | black | 92726 |
| IR-PD-KNX | - | 92123 |
| IR-PD-KNX-Mini | - | 93398 |

Technical data

| | |
|--|--|
| Voltage: | via KNX BUS |
| Dimensions: | 57 x 23 x 43 mm |
| Typ. power input: | 12 mA |
| Detection area: | horizontal 360° (Ceiling mounting) max. Ø 12 m across max. Ø 5 m towards max. Ø 4 m seated |
| Range: | |
| Monitored area (tangential movement): | 110 m ² / 2.5 m mounting height |
| Mounting height min./max./recommended: | 2 m / 5 m / 2.5 m |
| Degree / class of protection: | IP20 / Class III |
| Impact strength: | IK05 |
| Ambient temperature: | -25 °C to +55 °C |
| Housing: | polycarbonate, UV-resistant |
| Material color: | black mat, similar to RAL9005 |
| Number of light sensors: | 2 |
| Number of PIR sensors: | 2 |
| KNX TP 256: | Yes |
| KNX Secure: | Yes |
| Orientation light: | 5 - 100 % / OFF / 1 min - 255 min |
| Night light: | 5 - 100 % |
| Brightness set value: | 5 - 2000 Lux |

Product information

KNX sensor for installation in slatted ceilings or luminaires

KNX Secure ready

HCL/RGB control

Parameterisation from ETS 5 for integration into KNX systems

Individual adaption of the PIR sensor sensitivity

Mixed light measurement using internal and remote (optional) light sensors

Intelligent semi-automatic mode, occupancy-independent regulating mode (photoelectric switch), full automatic mode

1 x Light (for regulating or switching), 1 x slave output, 3 separate HVAC-blocs

Regulation of up to three lighting groups using offset (external influence possible)

Short presence, self-adjusting follow-up time, corridor function

Various locking functions

Soft-start

Two logic modules

Recall of light scenes

Deactivatable status indicators

The product database for import into the ETS database can be downloaded from the B.E.G. homepage.

Detection area can be extended thanks to master-slave-mode

Extensive optimization options for light measurement

Measured light value is communicated to the bus

Adaption of dimming curve

Bidirectionally remote control-capable with the IR adapter and the B.E.G. smartphone app

PIN code

IR remote control-capable via IR remote control (optionally)

5 button remote control, programmable at choice (accessory)

Programming button (phys. address) can be operated via remote control

HVAC mode (0=automatic, 1=comfort, 2=stand-by, 3=economy, 4=antifreeze/heat protection)

Manual influence via external KNX push buttons possible

Function control (heartbeat, cyclical sending)

Occupancy simulation

Forced switch-off

Intelligent central-off function

Premonition of switch-off

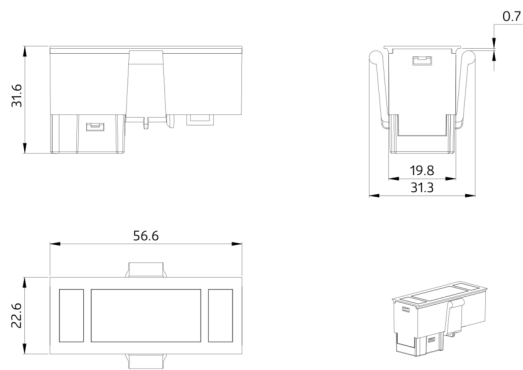
Burn-in function for fluorescent lamps selectable from 1h till 100h

Behaviour upon bus voltage return definable at choice

Variable safety pause after switching off the lights

Typical applications:

Offices, conference rooms, schools, nursery schools, hospitals



Accessories



BLE-IR-Adapter
Art.No: 93067

Dimensions: 40 x 55 x 103 mm
Material color: black
Frequency: 2.4 GHz ISM band, GFSK 0.2 dBm
+ 5.3 dBi = 5.5 dBm



IR-Adapter for Smartphones
Art.No: 92726

Dimensions: 47 x 19 x 10 mm
Degree / class of protection: IP20
Ambient temperature: -20 °C to
+40 °C



IR-PD-KNX
Art.No: 92123

Battery: 3.0 V Lithium CR2032
(inclusive)
Dimensions: 80 x 60 x 8 mm
Material color: -



IR-PD-KNX-Mini
Art.No: 93398

Battery: 3.0 V Lithium CR2032 (inclusive)
Dimensions: 57 x 35 x 7 mm
Material color: -