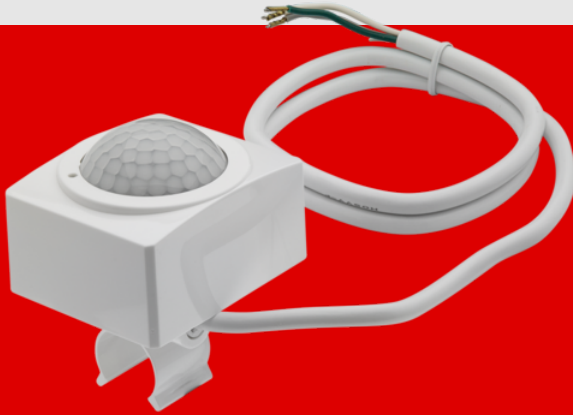


**B.E.G.**

**LUXOMAT®**



## PD5-S-Clip

Prod.No. 92316 EAN: 4007529923168

Slave device detector designed for use with T5 and T8 fluorescent tubes

For extending the detection area of a Master device

Trigger pulse to master device upon detected movement independent of the ambient light level

### Order data

Designation	Colour	Art.No
PD5-S-Clip	white	92316

## Technical data

Voltage:	230 V AC +/- 10% 50 Hz
Dimensions:	91.5 x 60 x 73 mm
Power consumption:	approx. 0.6 W
Detection area:	horizontal 360° (Ceiling mounting) max. Ø 10 m across max. Ø 6 m towards max. Ø 4 m seated
Range:	
Monitored area (tangential movement):	78 m <sup>2</sup> / 2.5 m mounting height
Mounting height min./max./recommended:	2 m / 5 m / 2.5 m
Degree / class of protection:	IP20 / Class II
Ambient temperature:	-25 °C to +50 °C
Housing:	polycarbonate, UV-resistant
Material color:	white glossy, similar to RAL9010
Cable length:	90 cm
Pulse interval:	9 sec

## Product information

Slave device detector designed for use with T5 and T8 fluorescent tubes

For extending the detection area of a Master device

Trigger pulse to master device upon detected movement independent of the ambient light level

Compatible with 230 V devices. Concerning exceptions please see the respective master device.

### Typical applications:

offices, production halls, virtually any place where suspended light strips are used

