



Casambi-enabled occupancy detector

DALI-2 interface for controlling digital dimmable ECGs in broadcast/multicast mode

Integrated temperature monitoring and short-circuit detection

## PD4N-CAS DALI-2

Prod.No. 93473 EAN: 4007529934737

### Order data

Designation	Colour	Art.No
PD4N-CAS DALI-2	white	93473

### Accessories

Designation	Colour	Art.No
SM socle mounting set IP54 PD4N H	anthracite	93786
SM socle mounting set IP54 PD4N H	white	93465
SM socle mounting set IP54 PD4N H	black	93788
SM socle mounting set IP54 PD4N H	traffic white	93787
SM socle mounting set IP65 PD4N	white	93314
Corridor lens PD4N type A, Cover ring	traffic white	93742
Corridor lens PD4N type A, Cover ring	anthracite	93741
Corridor lens PD4N type A, Cover ring	black	93743
Corridor lens PD4N type A	white	93073

lens PD4N, Cover ring	anthracite	93731
lens PD4N, Cover ring	black	93733
lens PD4N, Cover ring	traffic white	93732
Wire basket BSK (Ø 200 x 90 mm)	white	92199
Wall holder PD2N/4N Typ A	traffic white	93702
Wall holder PD2N/4N Typ A	anthracite	93701
Wall holder PD2N/4N Typ A	white	93700
Wall holder PD2N/4N Typ A	black	93703
Wall holder PD2N/4N Typ A	white	93164
SM socket for Wall holder	white	93192
Pendulum mounting set PD2/3/4 SM	white	93179

## Technical data

Voltage:	230 V AC ±10% 50 Hz
Dimensions:	Ø 106 x 95 mm
Settings:	Casambi App
Power consumption:	0.5 W
Detection area:	horizontal 360° oval (Ceiling mounting) max. Ø 24 m across max. Ø 8 m towards max. Ø 6.4 m seated
Range:	
Monitored area (tangential movement):	450 m <sup>2</sup> / 2.5 m mounting height
Mounting height min./max./recommended:	2 m / 10 m / 2.5 m
Degree / class of protection:	IP20 / Class II
Impact strength:	IK04
Ambient temperature:	-5 °C to +45 °C
Housing:	polycarbonate, UV-resistant white mat, similar to RAL9010
Material color:	
Number of PIR sensors:	4
<b>Channel 1 (lighting control)</b>	
DALI output:	80 mA (guaranteed), 125 mA (max.), shut down mechanism
Supported control gear:	DT0, DT5, DT6, DT7, DT8
Supported control devices:	- (single master)
Follow-up time:	1 sec - 60 min
Brightness set value:	1 - 4000 Lux
Light measuring:	Mixed light measuring

## Product information

Casambi-enabled occupancy detector
DALI-2 interface for controlling digital dimmable ECGs in broadcast/multicast mode
Integrated temperature monitoring and short-circuit detection
Version as single-master device, can be networked wirelessly
DALI output power can be increased with accessories
Bright LED indication for commissioning
Mixed light measurement with internal and external light sensor
Weighting between internal and external light sensor can be adapted to suit the application
Adjustment of the reflection factor and input of the luminosity for the display of the actual luminosity in the app
Extension of the detection area with additional B.E.G. Casambi devices possible
Individual adaption of detection sensitivity for each PIR sensor
Detection area can be restricted with blinds
Functions adjustable via Casambi app
Including pre-assembled spring clamp with strain relief and contact protection cap for recessed ceiling mounting
Accessory for surface mounting available
Accessories for wall mounting optionally available
Further accessories for colour matching optionally available

### Application examples:

entrance halls, corridors/hallways, open-plan offices,  
conference rooms, classrooms/seminar rooms, sports halls/  
storage rooms, underground car parks, staircases, toilets,  
equipment rooms, small offices



# CASAMBI



## Accessories



### SM socle mounting set IP54 PD4N H

Art.No: 93786

Dimensions: Ø 110 x 45 mm  
Degree / class of protection: IP54  
Material color: anthracite, similar to RAL7016



### SM socle mounting set IP54 PD4N H

Art.No: 93465

Dimensions: Ø 110 x 45 mm  
Degree / class of protection: IP54  
Material color: white, similar to RAL9010



### SM socle mounting set IP54 PD4N H

Art.No: 93788

Dimensions: Ø 110 x 45 mm  
Degree / class of protection: IP54  
Material color: black, similar to RAL9005



### SM socle mounting set IP54 PD4N H

Art.No: 93787

Dimensions: Ø 110 x 45 mm  
Degree / class of protection: IP54  
Material color: traffic white, similar to RAL9016



### SM socle mounting set IP65 PD4N

Art.No: 93314

Dimensions: 133 x 133 x 69 mm  
Degree / class of protection: IP65  
Material color: white



### Corridor lens PD4N type A, Cover ring

Art.No: 93742

Detection area: horizontal 360°  
(Ceiling mounting)  
Range: max. &Oslash; 40 m  
across<br>max. &Oslash; 20 m  
towards  
Monitored area (tangential  
movement): 250 m<sup>2</sup> / 2.5 m  
mounting height



**Corridor lens PD4N type A, Cover ring**

Art.No: 93741

Detection area: horizontal 360° (Ceiling mounting)  
Range: max. &Oslash; 40 m across<br>max. &Oslash; 20 m towards  
Monitored area (tangential movement): 250 m² / 2.5 m mounting height



**Corridor lens PD4N type A, Cover ring**

Art.No: 93743

Detection area: horizontal 360° (Ceiling mounting)  
Range: max. &Oslash; 40 m across<br>max. &Oslash; 20 m towards  
Monitored area (tangential movement): 250 m² / 2.5 m mounting height



**Corridor lens PD4N type A**

Art.No: 93073

Detection area: horizontal 360° (Ceiling mounting)  
Range: max. &Oslash; 40 m across<br>max. &Oslash; 20 m towards  
Monitored area (tangential movement): 250 m² / 2.5 m mounting height



**lens PD4N, Cover ring**

Art.No: 93731

Detection area: horizontal 360° (Ceiling mounting)  
Range: max. &Oslash; 24 m across<br>max. &Oslash; 8 m towards<br>max. &Oslash; 6.4 m seated  
Monitored area (tangential movement): 450 m² / 2.5 m mounting height



**lens PD4N, Cover ring**

Art.No: 93733

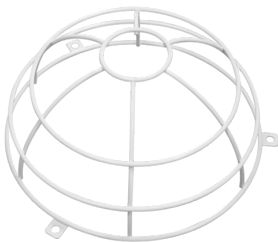
Detection area: horizontal 360° (Ceiling mounting)  
Range: max. &Oslash; 24 m across<br>max. &Oslash; 8 m towards<br>max. &Oslash; 6.4 m seated  
Monitored area (tangential movement): 450 m² / 2.5 m mounting height



**lens PD4N, Cover ring**

Art.No: 93732

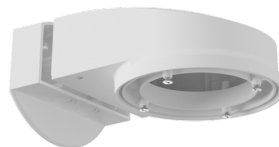
Detection area: horizontal 360° (Ceiling mounting)  
Range: max. &Oslash; 24 m across<br>max. &Oslash; 8 m towards<br>max. &Oslash; 6.4 m seated  
Monitored area (tangential movement): 450 m² / 2.5 m mounting height



**Wire basket BSK (Ø 200 x 90 mm)**

Art.No: 92199

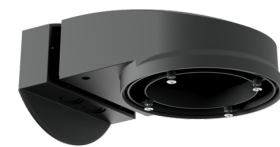
Dimensions: Ø 200 x 90 mm  
Impact strength: IK09  
Housing: coated steel basket



**Wall holder PD2N/4N Typ A**

Art.No: 93702

Dimensions: 133 x 106 x 66 mm  
Degree / class of protection: IP54 / Class II  
Housing: polycarbonate, UV-resistant



**Wall holder PD2N/4N Typ A**

Art.No: 93701

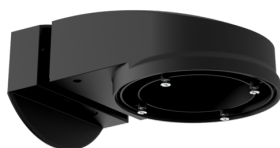
Dimensions: 133 x 106 x 66 mm  
Degree / class of protection: IP54 / Class II  
Housing: polycarbonate, UV-resistant



**Wall holder PD2N/4N Typ A**

Art.No: 93700

Dimensions: 133 x 106 x 66 mm  
Degree / class of protection: IP54 / Class II  
Housing: polycarbonate, UV-resistant



**Wall holder PD2N/4N Typ A**

Art.No: 93703

Dimensions: 133 x 106 x 66 mm  
Degree / class of protection: IP54 / Class II  
Housing: polycarbonate, UV-resistant



**Wall holder PD2N/4N Typ A**

Art.No: 93164

Dimensions: 133 x 106 x 66 mm  
Degree / class of protection: IP54 / Class II  
Housing: polycarbonate, UV-resistant



**SM socket for Wall holder**

Art.No: 93192

Dimensions: 103 x 80 x 26 mm  
Housing: polycarbonate, UV-resistant  
Material color: white



**Pendulum mounting set PD2/3/4 SM**

Art.No: 93179

Dimensions: 1 : Ø 113 x 79 mm, 2 : Ø 113 x 34 mm  
Housing: polycarbonate, UV-resistant  
Material color: white, similar to RAL9010