



## PD2N-RF-KNXs-DX-FC

Prod.No. 93580 EAN: 4007529935802

KNX RF PIR Motion Sensor (Deluxe) with 360° detection and a range of up to Ø10m (78 m<sup>2</sup>), communication via KNX RF wireless

### Order data

Designation	Colour	Art.No
PD2N-RF-KNXs-DX-FC	white	93580

### Accessories

Designation	Colour	Art.No
BLE-IR-Adapter	black	93067
IR-PD-KNX	-	92123
IR-PD-KNX-Mini	-	93398
SM socle mounting set IP54 PD2N H	white	93454
SM socle mounting set IP54 PD2N H	black	93783
SM socle mounting set IP54 PD2N H	traffic white	93782
SM socle mounting set IP54 PD2N H	anthracite	93781
Cover ring PD2N FM	black	93763
Cover ring PD2N FM	traffic white	93762
Cover ring PD2N FM	anthracite	93761
Cover ring PD2N FM	white	93760
Cover ring PD2N FC	black	93773

Cover ring PD2N FC	traffic white	93772
Cover ring PD2N FC	anthracite	93771
Wire basket BSK (Ø 200 x 90 mm)	white	92199
Wall holder PD2N/4N Typ A	traffic white	93702
Wall holder PD2N/4N Typ A	anthracite	93701
Wall holder PD2N/4N Typ A	white	93700
Wall holder PD2N/4N Typ A	black	93703
Wall holder PD2N/4N Typ A	white	93164
SM socket for Wall holder	white	93192
Blinds PD2N/PD3N		37367
Pendulum mounting set PD2/3/4 SM	white	93179
Adapter ring PD2N FM		93089

## Technical data

Voltage:	230 V AC $\pm$ 10% 50 / 60 Hz
Dimensions:	Ø 83 x 81 mm
Power consumption:	1 W
Detection area:	horizontal 360° (Ceiling mounting) max. Ø 10 m across max. Ø 6 m towards max. Ø 4 m seated
Range:	78 m <sup>2</sup> / 2.5 m mounting height
Monitored area (tangential movement):	2 m / 5 m / 2.5 m
Mounting height min./max./recommended:	IP20 / Class II
Degree / class of protection:	IK05
Impact strength:	-5 °C to +45 °C
Temperature measurement range:	-25 °C to +55 °C
Ambient temperature:	polycarbonate, UV-resistant
Housing:	white mat, similar to RAL9010
Material color:	2
Number of light sensors:	1
Number of PIR sensors:	Yes
KNX RF 256:	Yes
KNX Secure:	2300 W, $\cos \varphi = 1$ 1150 VA, $\cos \varphi = 0.5$ 300 W LED
Switching power:	$\mu$ -contact, dry NO contact
Type of contact (k):	5 - 100 % / OFF / 1 min - 255 min
Orientation light:	5 - 100 %
Night light:	5 - 2000 Lux
Brightness set value:	868.3 MHz (EU), RF1.R, 10 dBm
Frequency:	max. 150 m
Transmit range:	

## Product information

KNX RF occupancy detector
Communication via KNX RF radio
KNX Secure ready
HCL/RGB control
Parameterisation from ETS 5 for integration into KNX systems
Individual adaption of the PIR sensor sensitivity
Mixed light measurement using internal, external and remote (optional) light sensors
Intelligent semi-automatic mode, occupancy-independent regulating mode (photoelectric switch), full automatic mode
1 x Light (for regulating or switching), 1 x slave output, 3 separate HVAC-blocs
Regulation of up to three lighting groups using offset (external influence possible)
Short presence, self-adjusting follow-up time, corridor function
Various locking functions
Soft-start
Two logic modules
Recall of light scenes
Deactivatable status indicators
Temperature- and noise sensor
Detection area can be extended thanks to master-slave-mode
Extensive optimization options for light measurement
Measured light value is communicated to the bus
Adaption of dimming curve
Bidirectionally remote control-capable with the IR adapter and the B.E.G. smartphone app
PIN code
IR remote control-capable via IR remote control (optionally)
5 button remote control, programmable at choice (accessory)
Programming button (phys. address) can be operated via remote control
HVAC mode (0=automatic, 1=comfort, 2=stand-by, 3=economy, 4=antifreeze/heat protection)
Manual influence via external KNX push buttons possible
Function control (heartbeat, cyclical sending)

Occupancy simulation

Forced switch-off

Intelligent central-off function

Premonition of switch-off

Burn-in function for fluorescent lamps selectable from 1h till 100h

Behaviour upon bus voltage return definable at choice

Variable safety pause after switching off the lights

Optional potential-free switching contact for switching operation

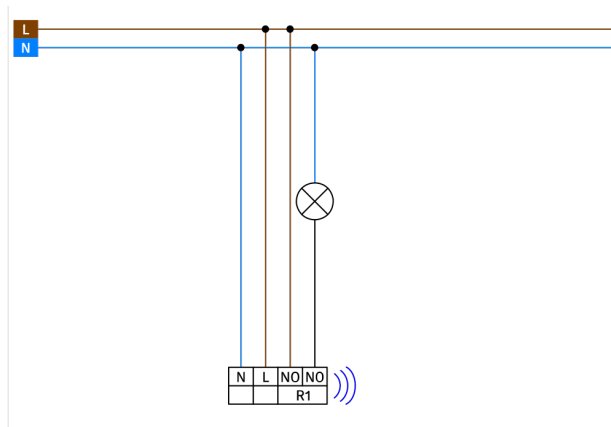
Repeater function can be activated

Perfectly suited for renovations and modernisations

Due to its radio frequency of 868 MHz, the device is only approved for use in Europe (+United Arab Emirates)

**Typical applications:**

Offices, conference rooms, schools, nursery schools, hospitals



## Accessories



**BLE-IR-Adapter**  
Art.No: 93067

Dimensions: 40 x 55 x 103 mm  
Material color: black  
Frequency: 2.4 GHz ISM band, GFSK  
0.2 dBm + 5.3 dBi = 5.5 dBm



**IR-PD-KNX**  
Art.No: 92123

Battery: 3.0 V Lithium CR2032 (inclusive)  
Dimensions: 80 x 60 x 8 mm  
Material color: -



**IR-PD-KNX-Mini**  
Art.No: 93398

Battery: 3.0 V Lithium CR2032 (inclusive)  
Dimensions: 57 x 35 x 7 mm  
Material color: -



**SM socle mounting set IP54 PD2N H**  
Art.No: 93454

Dimensions: Ø 110 x 65 mm  
Degree / class of protection: IP54  
Material color: white, similar to RAL9010



**SM socle mounting set IP54 PD2N H**  
Art.No: 93783

Dimensions: Ø 110 x 65 mm  
Degree / class of protection: IP54  
Material color: black, similar to RAL9005



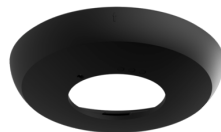
**SM socle mounting set IP54 PD2N H**  
Art.No: 93782

Dimensions: Ø 110 x 65 mm  
Degree / class of protection: IP54  
Material color: traffic white, similar to RAL9016



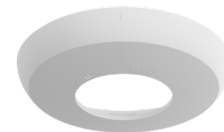
**SM socle mounting set IP54 PD2N H**  
Art.No: 93781

Dimensions: Ø 110 x 65 mm  
Degree / class of protection: IP54  
Material color: anthracite, similar to RAL7016



**Cover ring PD2N FM**  
Art.No: 93763

Dimensions: Ø 106 x 20 mm  
Impact strength: IK05  
Housing: polycarbonate, UV-resistant



**Cover ring PD2N FM**  
Art.No: 93762

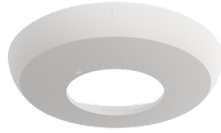
Dimensions: Ø 106 x 20 mm  
Impact strength: IK05  
Housing: polycarbonate, UV-resistant



**Cover ring PD2N FM**

Art.No: 93761

Dimensions: Ø 106 x 20 mm  
Impact strength: IK05  
Housing: polycarbonate, UV-resistant



**Cover ring PD2N FM**

Art.No: 93760

Dimensions: Ø 106 x 20 mm  
Impact strength: IK05  
Housing: polycarbonate, UV-resistant



**Cover ring PD2N FC**

Art.No: 93773

Dimensions: Ø 82 x 13 mm  
Impact strength: IK05  
Housing: polycarbonate, UV-resistant



**Cover ring PD2N FC**

Art.No: 93772

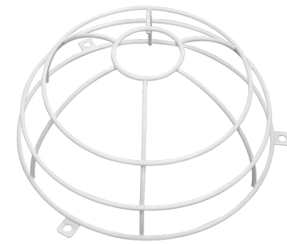
Dimensions: Ø 82 x 13 mm  
Impact strength: IK05  
Housing: polycarbonate, UV-resistant



**Cover ring PD2N FC**

Art.No: 93771

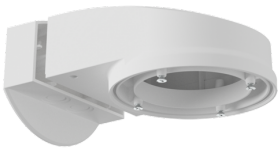
Dimensions: Ø 82 x 13 mm  
Impact strength: IK05  
Housing: polycarbonate, UV-resistant



**Wire basket BSK (Ø 200 x 90 mm)**

Art.No: 92199

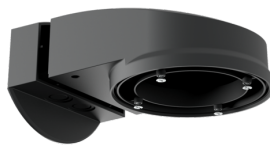
Dimensions: Ø 200 x 90 mm  
Impact strength: IK09  
Housing: coated steel basket



**Wall holder PD2N/4N Typ A**

Art.No: 93702

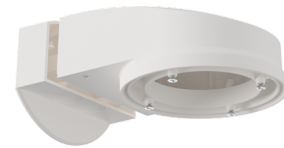
Dimensions: 133 x 106 x 66 mm  
Degree / class of protection: IP54 / Class II  
Housing: polycarbonate, UV-resistant



**Wall holder PD2N/4N Typ A**

Art.No: 93701

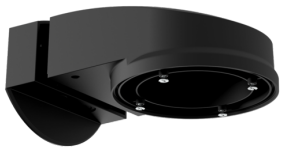
Dimensions: 133 x 106 x 66 mm  
Degree / class of protection: IP54 / Class II  
Housing: polycarbonate, UV-resistant



**Wall holder PD2N/4N Typ A**

Art.No: 93700

Dimensions: 133 x 106 x 66 mm  
Degree / class of protection: IP54 / Class II  
Housing: polycarbonate, UV-resistant



**Wall holder PD2N/4N Typ A**

Art.No: 93703

Dimensions: 133 x 106 x 66 mm  
Degree / class of protection: IP54 / Class II  
Housing: polycarbonate, UV-resistant



**Wall holder PD2N/4N Typ A**

Art.No: 93164

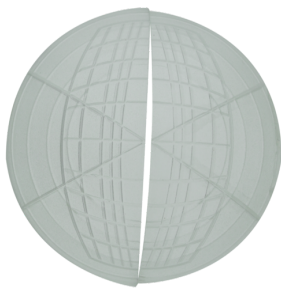
Dimensions: 133 x 106 x 66 mm  
Degree / class of protection: IP54 /  
Housing: polycarbonate, UV-resistant



**SM socket for Wall holder**

Art.No: 93192

Dimensions: 103 x 80 x 26 mm  
Housing: polycarbonate, UV-resistant  
Material color: white



**Blinds PD2N/PD3N**

Art.No: 37367

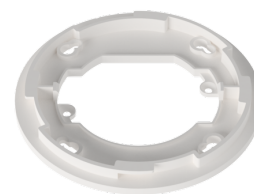
Housing: ABS



**Pendulum mounting set PD2/3/4 SM**

Art.No: 93179

Dimensions: 1 : Ø 113 x 79 mm, 2 : Ø 113 x 34 mm  
Housing: polycarbonate, UV-resistant  
Material color: white, similar to RAL9010



**Adapter ring PD2N FM**

Art.No: 93089

Dimensions: Ø 101 x 10 mm  
Housing: polycarbonate, UV-resistant  
Material color: white mat, similar to RAL9010