

**B.E.G.****LUXOMAT®****PD2-M-2C-12-48V-3A-SM**  
**Set 92154-92441**

Occupancy detector with operating voltage of 12-48 V

Two potential-free (dry) channels

Can be used as either Master device or Slave device

**Order data****Designation**

PD2-M-2C-12-48V-3A-SM  
Wall holder PD4-SM

**Colour**

white  
white

**Art.No**

92154  
92441

**Areas of application**

- corridors/hallways
- toilets
- equipment rooms
- small offices
- open-plan offices
- conference rooms

## Technical data

Voltage:	12 - 48 V AC / DC
Dimensions:	<b>Ø 98 x 47 mm + 130 x 100 x 53 mm (92441)</b>
Power consumption:	< 1 W
Detection area:	horizontal 360° (Ceiling mounting) max. Ø 10 m across max. Ø 6 m towards max. Ø 4 m seated
Range:	
Monitored area (tangential movement):	78 m <sup>2</sup> / 2.5 m mounting height
Mounting height min./max./recommended:	2 m / 5 m / 2.5 m
Degree / class of protection:	IP20 / Class II
Impact strength:	IK05
Ambient temperature:	-25 °C to +50 °C
Housing:	polycarbonate, UV-resistant
Material color:	white mat, similar to RAL9010

### **Channel 1 (lighting control, potential-free (dry))**

Switching power:	3 A; cos $\phi$ = 1
Type of contact (k):	1x $\mu$ -contact, dry NO contact
Follow-up time:	15 sec - 30 min, Pulse
Brightness set value:	10 - 2000 Lux

### **Channel 2 (HVAC control potential-free (dry))**

Switching power:	3 A; cos $\phi$ = 1
Type of contact:	1x $\mu$ -contact, dry NO contact
Follow-up time:	5 min - 120 min, Alarm pulse, Pulse
Light measuring:	Mixed light measuring

## Product information

Set : PD2-M-2C-12-48V-3A-SM + Wall holder PD4-SM white

Occupancy detector with operating voltage of 12-48 V

Two potential-free (dry) channels

Can be used as either Master device or Slave device

Manual switching via push-button possible

Additional functions can be set up using the optional remote control.

Factory settings 10 min and 500 lux (15 min HVAC)



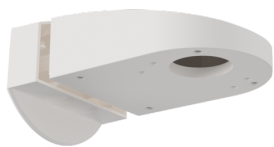
## Set items

To receive the bundle according to the technical specification, please order the items listed.



**PD2-M-2C-12-48V-3A-SM**  
Art.No: 92154

Voltage: 12 - 48 V AC / DC  
Dimensions: Ø 98 x 47 mm  
Power consumption: < 1 W



**Wall holder PD4-SM**  
Art.No: 92441

Dimensions: 130 x 100 x 53 mm  
Housing: polycarbonate, UV-resistant  
Material color: white