

B.E.G.**LUXOMAT® net**

DIM4-230/UNI/250/H/KNX X REG

Prod.No. 90222 EAN: 4007529902224

- Voltage: 230 V AC 50 / 60 Hz
additionally via KNX BUS
- Dimensions: 90 x 144 x 64 mm (8 TE)
- Typ. power input: 5 mA typical
20 mA max.

Order data

Designation	Colour	Art.No
DIM4-230/UNI/250/H/KNX REG	grey	90222

Accessories

Designation	Colour	Art.No
LZ-230/UNI/420 REG	grey	90223

Technical data

Voltage:	230 V AC 50 / 60 Hz additionally via KNX BUS
Dimensions:	90 x 144 x 64 mm (8 TE)
Typ. power input:	5 mA typical 20 mA max.
Power consumption:	0.15 W
Degree / class of protection:	IP20 / Class II
Ambient temperature:	-5 °C to +45 °C
Housing:	Polycarbonate / POM
Material color:	grey
Display elements:	1 x Red LED: Programming LED, push button 4 x Red LED: Channel status
Manual operation:	4 x push button 3 x LED, red
KNX TP 256:	Yes
Connections and wires:	1 x Bus line: EIB/KNX bus terminal (black/red) 0.5 ... 4.0 mm ² rigid 0.5 ... 2.5 mm ² fine- wired (with or without ferrule)
Switching power:	Resistive loads 20 ... 250 W LED-Lamps typ. 3 ... 50 W Fluorescent lamps typ. 3 ... 50 W Inductive load 20 ... 250 VA For details please see User manual
Type of contact (k):	MOSFET
Outputs:	4 dim outputs

Product information

Switching and dimming of incandescent lamps, HV halogen lamps, Tronic transformers with halogen lamps, dimmable inductive transformers with halogen or LED lamps, HV LED and compact fluorescent lamps

4 x 250 W, HV LED lamps typ. 4 x 7 ... 50 W 1 x 950 W

Automatic or manual selection of the dimming principle suitable for the load

Open-circuit, short-circuit and over temperature protected

Short-circuit message

Outputs manually operable

Feedback of the switching status and the dimming value

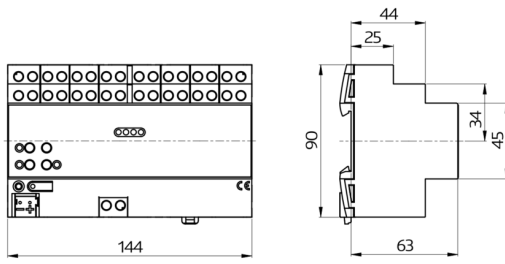
adjustable switch-on and dimming behavior

Time functions: Switch-on, switch-off delay, staircase light switch with pre-warning function

light scene operation

Locking of individual outputs by hand or bus

Status display of the outputs via LED



Accessories



LZ-230/UNI/420 REG

Art.No: 90223

Voltage: 230 V AC 50 / 60 Hz

Dimensions: 90 x 36 x 64 mm (2 TE)

Power consumption: 0.5 - 4 W