

**B.E.G.****LUXOMAT®**

## BL2-PLUS-FC

Prod.No. 93405 EAN: 4007529934058

230V PIR motion detector with 360° detection and a range of up to Ø8m (50 m<sup>2</sup>), remote-controlled

### Order data

Designation	Colour	Art.No
BL2-PLUS-FC	white	93405

### Accessories

Designation	Colour	Art.No
IR-BL-PLUS	-	93406
BLE-IR-Adapter	black	93067
Mounting set BL2-SM	white	93256
Mounting set BL2-FM	white	93251
Wire basket BSK (Ø 200 x 90 mm)	white	92199
RC-Arc extinction kit	white	10880
Mini-RC-Arc extinction kit		10882

## Technical data

Voltage:	110 - 240 V 50 / 60 Hz
Dimensions:	Ø 80 x 61 mm
Power consumption:	0.3 W
Detection area:	horizontal 360° (Ceiling mounting) max. Ø 8 m across max. Ø 4.8 m towards seated
Range:	50 m <sup>2</sup> / 2.5 m mounting height
Monitored area (tangential movement):	2 m / 5 m / 2.5 m
Mounting height min./max./recommended:	IP23 / Class II
Degree / class of protection:	-25 °C to +50 °C
Ambient temperature:	polycarbonate, UV-resistant
Housing:	white
Material color:	0.5 - 1.5 mm <sup>2</sup> for solid conductors
Connections and wires:	

### Channel 1 (lighting control)

Switching power:	1000 W, $\cos \varphi = 1$ 500 VA, $\cos \varphi = 0.5$ 400 W LED
Type of contact (k):	1x $\mu$ -contact, NO contact
Follow-up time:	15 sec - 30 min
Switch-on threshold:	10 - 2000 Lux

## Product information

Remote control-capable occupancy detector for inside use with circular detection area

For mounting in suspended ceilings

One channel for light switching

Manual switching via push-button possible

Basic functions for cost-effective applications

Ready-to-operate thanks to factory settings

Accessory for surface mounting and flush mounting available

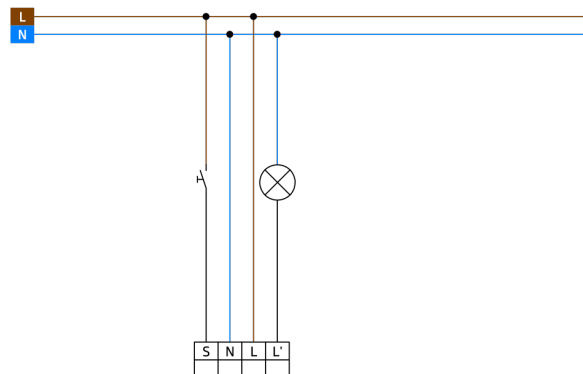
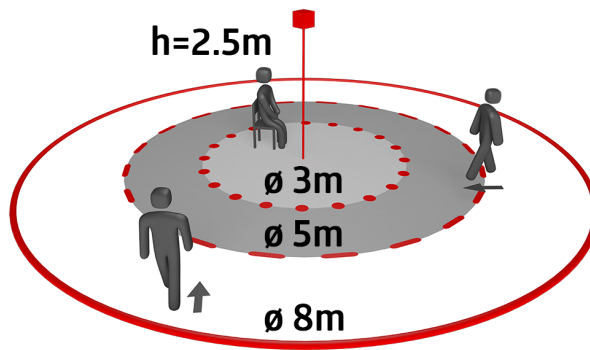
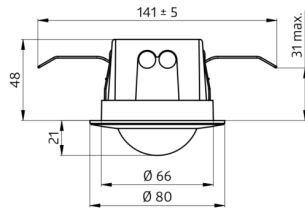
Factory setting: High detection sensitivity, follow-up time 10 min, switch-on threshold 500 lux

### Easy operation with remote control (required)

High-performance relay designed for 100,000 switching cycles under high load, several million switching cycles possible under low load

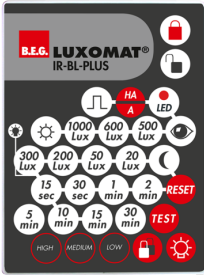
### Typical applications:

Offices, conference rooms, schools, nursery schools, hospitals





## Accessories



### IR-BL-PLUS

Art.No: 93406

Battery: 3.0 V Lithium CR2032 (inclusive)  
 Dimensions: 80 x 60 x 9 mm  
 Housing: polycarbonate, UV-resistant



### BLE-IR-Adapter

Art.No: 93067

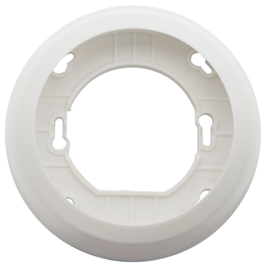
Dimensions: 40 x 55 x 103 mm  
 Material color: black  
 Frequency: 2.4 GHz ISM band, GFSK  
 0.2 dBm + 5.3 dBi = 5.5 dBm



### Mounting set BL2-SM

Art.No: 93256

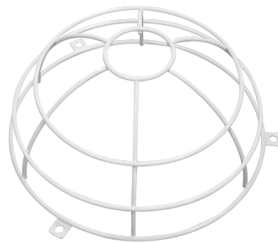
Dimensions: Ø 109 x 50 mm  
 Degree / class of protection: IP23  
 Material color: white



### Mounting set BL2-FM

Art.No: 93251

Dimensions: Ø 104 x 19 mm  
 Material color: white



### Wire basket BSK (Ø 200 x 90 mm)

Art.No: 92199

Dimensions: Ø 200 x 90 mm  
 Impact strength: IK09  
 Housing: coated steel basket



### RC-Arc extinction kit

Art.No: 10880

Voltage: 230 V AC ±10%  
 Dimensions: 38 x 12 x 26 mm  
 Degree / class of protection: IP20 / Class II



### Mini-RC-Arc extinction kit

Art.No: 10882

Voltage: 230 V AC ±10%  
 Dimensions: 50 x 23 x 8 mm  
 Degree / class of protection: IP20 / Class II