

**B.E.G.**

**LUXOMAT®**

10x



## 10 x BL2-FC Set 93327-93251-92199

Ceiling motion detector for indoor use with a 360° detection area

For mounting in suspended ceilings

One channel for light switching

### Order data

| Designation                     | Colour | Art.No |
|---------------------------------|--------|--------|
| 10 x BL2-FC                     | white  | 93327  |
| Mounting set BL2-FM             | white  | 93251  |
| Wire basket BSK (Ø 200 x 90 mm) | white  | 92199  |

## Technical data

|  |  |
|--|--|
| Voltage:                               | 110 - 240 V  |
| Dimensions:                            | <b>Ø 200 x 90 mm (92199)</b>                                     |
| Power consumption:                     | 0.3 W  |
| Detection area:                        | horizontal 360°<br>(Ceiling mounting)                            |
| Range:                                 | max. Ø 8 m across<br>max. Ø 4.8 m towards<br>max. Ø 3.2 m seated |
| Monitored area (tangential movement):  | 50 m <sup>2</sup> / 2.5 m mounting height                        |
| Mounting height min./max./recommended: | 2 m / 5 m / 2.5 m  |
| Degree / class of protection:          | IP23 / Class II  |
| Impact strength:                       | <b>IK09 (92199)</b>  |
| Ambient temperature:                   | -25 °C to +50 °C   |
| Housing:                               | <b>polycarbonate, UV-resistant + coated steel basket (92199)</b> |
| Material color:                        | white  |
| Connections and wires:                 | 0.5 - 1.5 mm <sup>2</sup> for solid conductors                   |

### Channel 1 (lighting control)

|                      |   |
|----------------------|---|
| Switching power:     | 1000 W, cos $\varphi$ = 1<br>500 VA, cos $\varphi$ = 0.5<br>400 W LED |
| Type of contact (k): | 1x $\mu$ -contact, NO contact   |
| Follow-up time:      | 15 sec - 60 min   |
| Switch-on threshold: | 10 - 2000 Lux   |

## Product information

Set : 10 x BL2-FC + Mounting set BL2-FM white + Wire basket BSK (Ø 200 x 90 mm) white

Ceiling motion detector for indoor use with a 360° detection area

For mounting in suspended ceilings

One channel for light switching



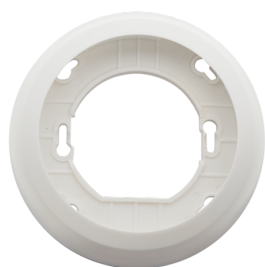
## Set items

To receive the bundle according to the technical specification, please order the items listed.



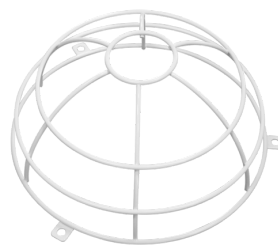
**10 x BL2-FC**  
Art.No: 93327

Voltage: 110 – 240 V  
Dimensions: Ø 80 x 61 mm  
Power consumption: 0.3 W



**Mounting set BL2-FM**  
Art.No: 93251

Dimensions: Ø 104 x 19 mm  
Material color: white



**Wire basket BSK (Ø 200 x 90 mm)**  
Art.No: 92199

Dimensions: Ø 200 x 90 mm  
Impact strength: IK09  
Housing: coated steel basket