

# B.E.G. One

## Adapter

Our app can only be used in combination with one of our adapters.



### BLE-IR-adapter

For using the BLE-IR-adapter, you first activate Bluetooth on your Smartphone and select the BLE-IR-adapter in the app. By pressing the button on the adapter, both devices are connected. The infrared range between detector and adapter is approx. 10m. After 3 minutes of inactivity, the adapter automatically enters the energy saving mode.



### IR-adapter

As usual, the IR-adapter is plugged into the headphone socket and is then automatically connected to the app. To optimise the sending power, please set the volume to maximum.



## B.E.G. One

Download the remote control app now for free!



B.E.G. UK Ltd  
Apex Court – Grove House  
Campmill Road · West Byfleet  
Surrey KT14 6SQ

T +44 87 08 50 54 12  
F +44 87 08 50 54 13

info@beguk.co.uk  
beg-luxomat.com

FOLLOW US:



# APP



## B.E.G. One

One App for all products!

Subject to technical and design changes as well as errors.

LFL 51041-1 - 230621



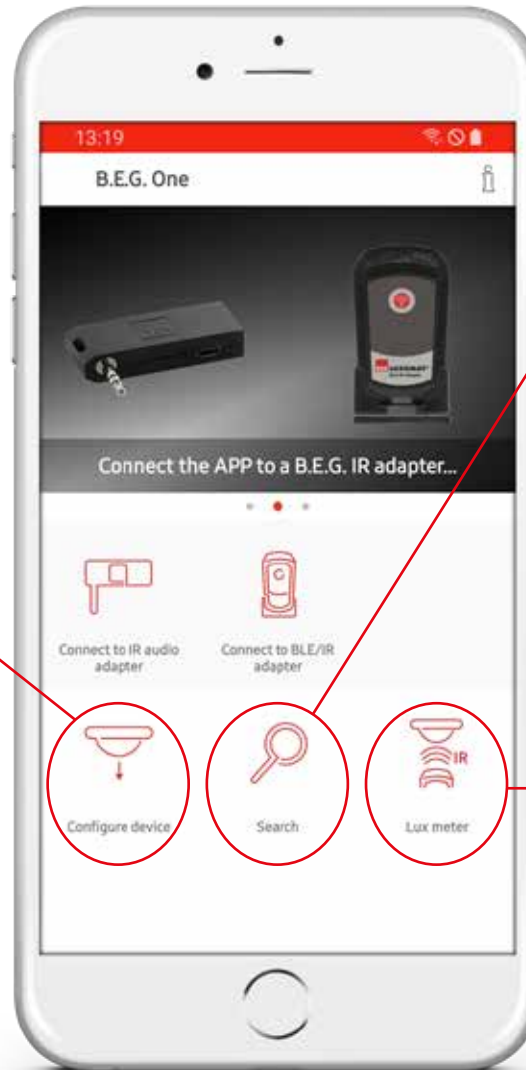
**Now available in the App store**

The B.E.G. One App converts your Smartphone into a remote control for all B.E.G. products, monodirectional and bidirectional. Thanks to the new and intuitive design it is very easy to use the app.

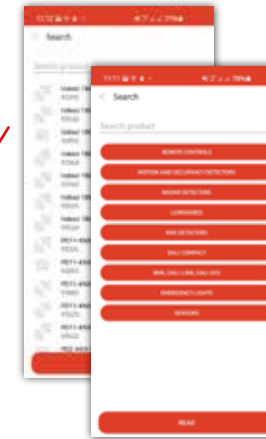
Test it out right away!

**Bidirectional parameterisation**

After having selected "Configure Device" or "Search", bidirectional devices can be read out using the "Read" button. After that, part number and software version are indicated in the app. You can then set the parameters and send them to the product using the "Send" button. The button "Documentation" will take you to the product page of our website. There you will find a lot of further information such as the operating instructions, technical information or suitable accessories.



**Search**



You can search for products, categories or remote controls. The last products are stored in the history.

**Monodirectional parameterisation**  
The product is selected using the "Search" function. You can then parameterise one or several commands. A help text is available for each command.

**Luxmeter**



As of Generation 6, the BLE-IR adapter can also be used as a luxmeter for the B.E.G. KNX detectors.