

## Ceiling mounted occupancy detectors - 1-channel

### PD9-M-1C-SDB-IP65



white mat, similar to RAL9010 , Art.-Nr.: 92912      silver mat, similar to RAL9022 , Art.-Nr.: 92913

### Product Information

- Mini-occupancy detector designed for high-humidity locations
- One potential-free (dry) switching contact
- Version as master device
- One additional Slave device sensor can be directly connected
- Additional functions can be set up using the optional remote control.
- Spring clips for quick and easy installation in suspended ceilings and light fittings
- **Application examples:**  
entrance halls, plumbed rooms/bathrooms

### Technical Data

|  |   |
|--|---|
| <b>Voltage:</b>                                  | 230 V AC $\pm$ 10% 50 Hz  |
| <b>Dimensions:</b>                               | Sensor head: $\varnothing$ 36 x 28 mm, Power supply: 154 x 38 x 25 mm                             |
| <b>Power consumption:</b>                        | 2,2 W   |
| <b>Detection area:</b>                           | horizontal 360° (Ceiling mounting)  |
| <b>Range:</b>                                    | max. $\varnothing$ 10 m across<br>max. $\varnothing$ 6 m towards<br>max. $\varnothing$ 4 m seated |
| <b>Monitored area<br/>(tangential movement):</b> | 78 m <sup>2</sup> / 2,5 m mounting height   |

|   |  |
|---|--|
| <b>Mounting height<br/>min./max./recommended:</b>         | 2 m / 5 m / 2,5 m  |
| <b>Degree / class of<br/>protection:</b>                  | IP65 / Class III   |
| <b>Impact strength:</b>                                   | IK03   |
| <b>Ambient temperature:</b>                               | -25 °C to +50 °C   |
| <b>Housing:</b>   | polycarbonate, UV-resistant  |
| <b>Cable length:</b>                                      | 350 cm   |
| <b>Channel 1 (lighting control, potential-free (dry))</b> |  |
| <b>Switching power:</b>                                   | 2300 W, $\cos \varphi = 1$<br>1150 VA, $\cos \varphi = 0,5$<br>300 W LED<br>max. inrush current $I_p$ (20 ms) = 80 A |
| <b>Type of contact:</b>                                   | 1x $\mu$ -contact, dry NO contact  |
| <b>Follow-up time:</b>                                    | 15 sec - 30 min, Pulse   |
| <b>Switch-on threshold:</b>                               | 20 - 1500 Lux<br>Mixed light measuring   |

---

## Description

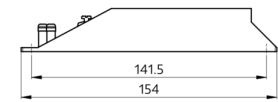
| Description          | Colour                         | Part number | EAN number    |
|----------------------|--------------------------------|-------------|---------------|
| PD9-M-1C-SDB-IP65-FC | white mat, similar to RAL9010  | 92912       | 4007529929122 |
| PD9-M-1C-SDB-IP65-FC | silver mat, similar to RAL9022 | 92913       | 4007529929139 |

---

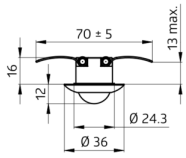
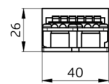
## Accessory

| Description                | Colour                    | Part number | EAN number    |
|----------------------------|---------------------------|-------------|---------------|
| BLE-IR-Adapter             | black                     | 93067       | 4007529930678 |
| IR-PD9                     | -                         | 92201       | 4007529922017 |
| IR-PD-Mini                 | -                         | 92159       | 4007529921591 |
| RC-Arc extinction kit      | white                     | 10880       | 4007529108800 |
| Mini-RC-Arc extinction kit | black                     | 10882       | 4007529108824 |
| PD9-SDB                    | white, similar to RAL9010 | 92915       | 4007529929153 |

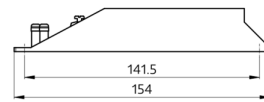
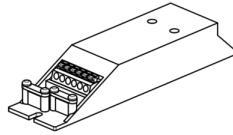
---



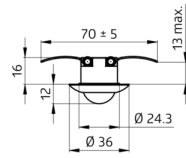
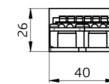
power supply



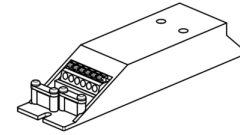
sensor head



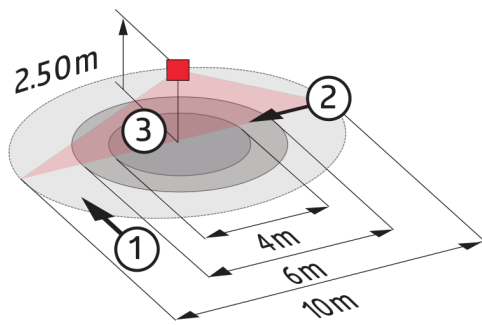
power supply



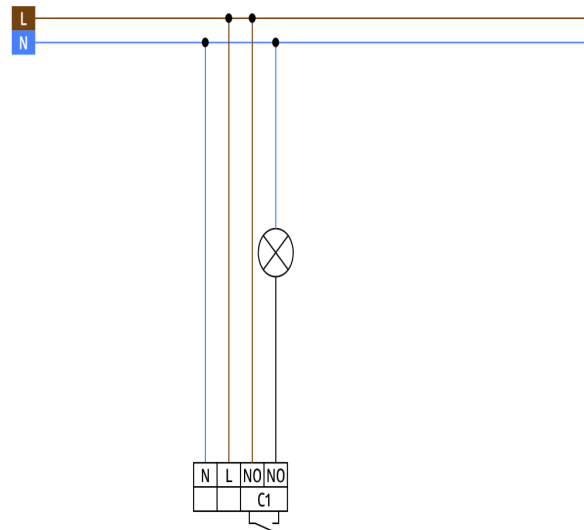
sensor head



### Dimensions 92912



### Dimensions 92913



### Range diagram

- 1: Walking across
- 2: Walking towards
- 3: Seated activity

### Wiring diagrams