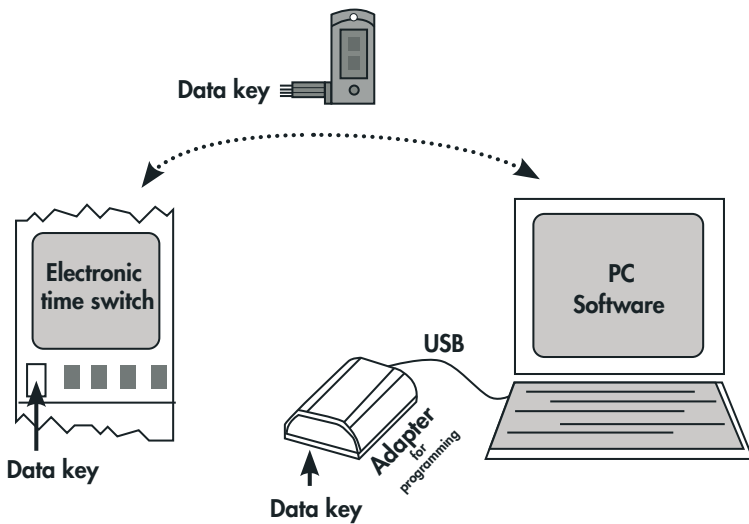




LUXOMAT® TS-ACC-DS2

Installation and Operating Instruction for B.E.G. PC-Software



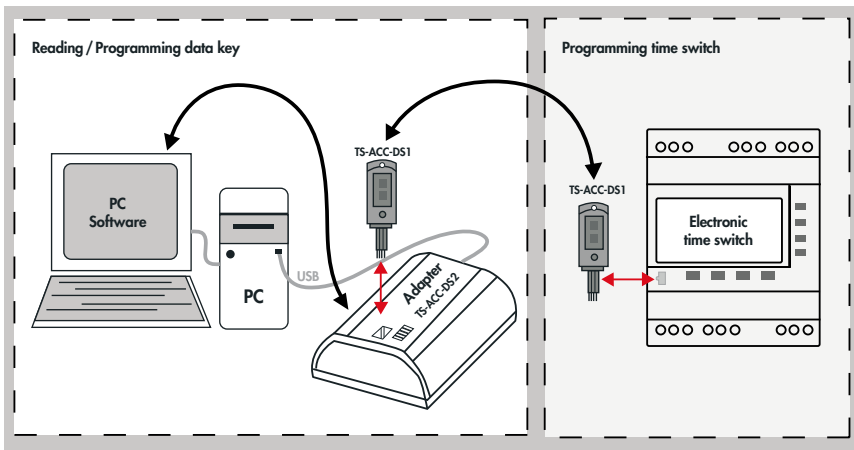
1. Directory

1. Directory	2
2. Introduction	3
2.1. Product description	3
2.2. Pictograms	3
2.3. Software installation	4
2.4. Hardware installation	5
3. Program start and languages	8
3.1. Start icon	8
3.2. Define type of time switch	8
3.3. Adjustment of the language	8
4. Overview, menu and symbols	9
4.1. Program overview	9
4.1.1. Table	9
4.1.2. Chart	9
4.1.3. Switch the mode of view	9
4.1.4. Refresh chart	10
4.1.5. Choose the period you are interested in!	10
4.2. Menu bar - overview	11
4.3. Toolbar	11
5. Programming of a new switching time	12
5.1. Programming of a standard switching time	12
5.2. SP special program (yearly time switch)	13
5.2.1. Activation of a special program (yearly time switch) ..	14
5.3. Add-Ons	15
5.3.1. Extra switching time	15
5.3.2. Permanent programm	15
6. Data key functions	16
6.1. Read data key	16
6.2. Write data key	16
7. Further information	17
7.1. Refreshing the chart	17
7.2. Duplicate	17
7.3. Cycle function	18
7.3.1. Cycle activation and definition	18
7.4. Saving / Location project files	18

2. Introduction

2.1. Product description

The PC-Software **TS-ACC-DS2** is a tool for a quick and easy creation of a switching program. Via USB-adapter **TS-ACC-DS2** and data key **TS-ACC-DS1** the switching program can be transferred between the time switch and the PC.

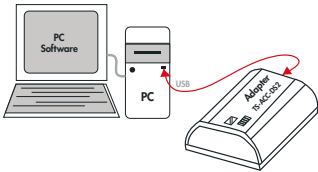


2.2. Pictograms

Pictograms	Defintion
	<u>Information</u> The pictogram offers helpful information.
	<u>Title of a handling sequence</u> The pictogram shows the handling sequence.
	<u>Elements of a handling sequence</u> The pictogram prompts the user to carry out an action!

2.3. Software installation

Please carry out following instructions for installing the programming software **TS-ACC-DS2** successfully under Windows (2000, XP, VISTA):



Software installation



Insert CD **TS-ACC-DS2** into CD/DVD-drive.



Installation starts automatically, please carry-out advises of the routine.



TS-ACC-DS2 will add an icon on the desktop and will be added within the start menu
(Start menu: Start ▶ programs ▶ LU-TS-ACC-DS2 ▶ ...)

If the installation does NOT start automatically please carry out following sequence:



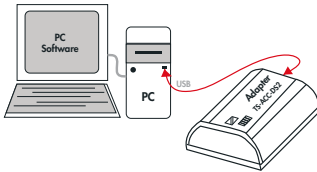
Open CD-directory and execute file
Setup_LU_TS_ACC_DS2.exe



Follow the on screen instructions

2.4. Hardware installation

Please carry-out following instructions for installing the USB adapter **TS-ACC-DS2** successfully under Windows (2000, XP, VISTA):



STEP 1 – Connect USB-cable



Connect B-USB-connector of the cable (included in delivery) to adapter **TS-ACC-DS2**.



Connect A-USB-connector of the cable with your computer.



STEP 2 – Driver installation

After Step 1 the hardware installing tool of windows starts automatically:



Choose: **"No, ..."**.



Confirm with **"Next ►"**.



Choose: **"Install from a list or specific location"**.



Confirm with **"Next ►"**.



Confirm: **"Search for the best driver in these location"**.



Confirm: **"Include this location in the search"**.



Click: **"Browse"**.



Enter the path to sub-folder **"Driver"** on CD **TS-ACC-DS2**.



Confirm with **"Next ►"**.

**INFO**

Windows copies driver.

Confirm security note with
"Continue Anyway".Complete the first part of the installation by clicking
"Finish".**INFO**

Further installation steps required, the procedure will start automatically.

Confirm again security note with
"Continue Anyway".Choose:
"No, ...".Confirm with **"Next >"**.



- ☞ Choose: **“Install from a list or specific location”**.
- ☞ Confirm with **“Next ▶”**.



- ☞ Confirm: **“Search for the best driver in these locations”**.
- ☞ Confirm: **“Include this location in the search”**.
- ☞ Click: **“Browse”**.
- ☞ Enter the path to sub-folder **“Driver”** on CD **TS-ACC-DS2**.
- ☞ Confirm with **“Next ▶”**.

INFO Windows copies driver.



- ☞ Complete the installation by clicking **“Finish”**.

INFO The hardware is now ready to use.

3. Program start and languages

3.1. Start icon



☞ Start the PC-software **LU-TS-ACC-DS2** by a double click of the **B.E.G.** start-symbol.

OR

☞ Execute **LU-TS-ACC-DS2** within "windows" start menu **Start ▶ Programs ▶ LU-TS-ACC-DS2 ▶ LU-TS-ACC-DS2**.

3.2. Define type of time switch



The program starts with a welcome window.

☞ Choose the desired product type.

☞ Confirm with "**Next >**".

3.3. Adjustment of the language



🔄 **STEP 1**

To change the languages please proceed as follows:

☞ Click menu "**Adjustment**".

☞ Click menu "**Language**".



🔄 **STEP 2**

☞ Choose language.

☞ Confirm with "**OK**".

🔄 **STEP 3**

☞ Restart the program.

INFO The new language configuration will be activated only after a restart of the software.

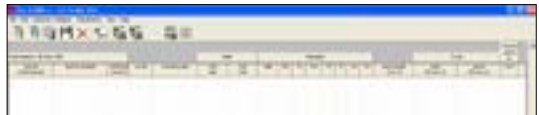
4. Overview, menu and symbols

4.1. Program overview

You have the choice between two different views of your switching program: **Table** and **chart**.

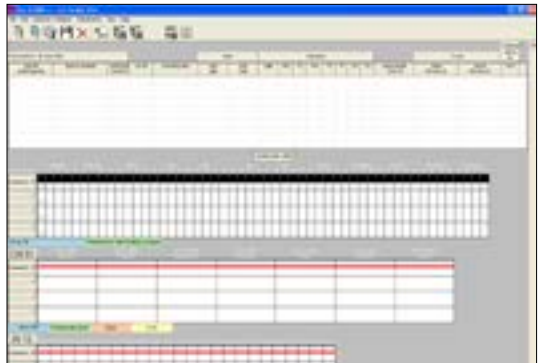
4.1.1. Table

Default view is "table" and the switching steps are listed as lines.



4.1.2. Chart

You always have the possibility to switch between table and chart. If you switch to chart, three different charts with time dependent switching status of all channels will appear.



PLEASE NOTE: Special program (**SP 1 ... 10**) and extra switching times (**EXTRA**) will **NOT** shown in the chart!

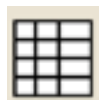
4.1.3. Switch the mode of view



Show chart / Refresh chart



Click "**Refresh chart**" symbol.



Show table




Click "**Show table**" symbol.


4.1.4. Refresh chart

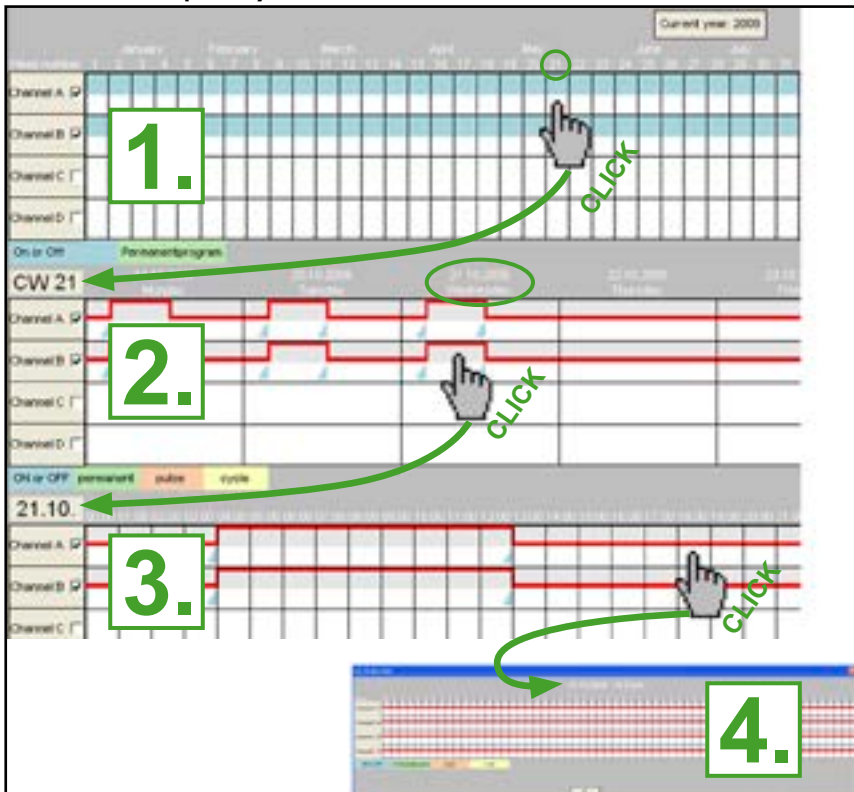
If you are working with the chart, new switching times will only be shown if you refresh the chart by click **“Refresh chart”** symbol.

 **Refresh chart**

 Click **“Refresh chart”** symbol.

 New switching steps will only be shown after refreshing the chart.

 The more memory locations you use, the longer it takes to refresh/show the chart. This can take up to 1 minute!

4.1.5. Choose the period you are interested in!

1. Yearly / 2. Weekly / 3. Daily / 4. Hourly












4.2. Menu bar – overview

File	Edit	Data key	Adjustments	View	Help
New project	New switching time	Reading data key	Language	Status bar	Manual
Open	Duplicate	Programming data key	Project description	Toolbar	About...
Open last project	Delete		Channel description	Show chart	
Close project			Astro settings*	Show table	
Save project			Cycle settings*		
Save project as...			Location project files		
Export file as CSV					

4.3. Toolbar

The toolbar of LU-TS-ACC-DS2 is as follows:



Icon	Name: Description
	New switching time: Enter new switching time
	Duplicate: Enter new standard switching time on the basis on an existing one
	Open project: Open existing project file
	Save project
	Delete: Delete marked switching Step
	CSV export: Export switching program as coma separated file
	Reading data key: Read memory of the data key into the PC
	Programming data key: Write switching program from the PC-program to the data key
	<ol style="list-style-type: none"> Cycle settings (black): Open cycle settings Cycle settings (grey): Cycle function is not available for this time switch
	Refresh chart: Refreshes or shows charts of the time dependent switching functions
	Show table: Show switching program as table

5. Programming of a new switching time

5.1. Programming of a standard switching time



STEP 1



Click **“New switching time”**.

OR



Double click an empty line within the table.



Window **“new switching time”** opens!



STEP 2



Choose the channel/channel(s) for which you would like to enter a switching time.



Confirm with **“OK ▶”**.



STEP 3



Choose program type **STANDARD**.



Confirm with **“OK ▶”**.



STEP 4



Choose the desired **switching function**.



Standard weekly time switch: **ON-/OFF** or **PULSE**

Astro timers: **ON-/OFF** or **ASTRO**

Weekly time switch with cycle function: **ON-/OFF, PULSE, CYCLE***

Yearly time switches: **ON-/OFF, PULSE, CYCLE***

*Will only be offered after activation of Cycle(s).



Confirm with **“OK ▶”**.



FURTHER STEPS



Further programming steps depend on the choice of the **switching function** (Step 4). Follow further advices within window **“new switching time”**.



5.2. SP special program (yearly time switch)

The yearly function is fulfilled by the use of so called special (weekly) programs (SP) which are later activated (called up) by date as often as required. You can define up to 10 different special programs with arbitrary switching steps (of course only within the total number of 300 memory locations). The SP will only be applied if activated by date (SP Activation by date see point 5.2.1).

**STEP 1**Click **“New switching time”**.**OR**

Double click an empty line within the table.

Window **„new switching time“** opens!**STEP 2**

Choose the channel/channel(s) for which you would like to enter a switching time.

Confirm with **“OK ▶”**.**STEP 3**If you define a new switching time **“SP = special program”**, you have to choose a SP-Number **FIRST (SP 1 – SP 10)**.You can enter within each special program (**SP 1 – SP 10**) as many switching steps as required (limited only by the max. quantity of memory locations).Choose program type **SP 1 – SP 10**.Confirm with **“OK ▶”**.**STEP 4**Choose the desired **switching function**.Within yearly time switches: **ON-/OFF, PULSE, CYCLE*, (Activate SP**)**

*Will only be offered after activation of Cycle(s).

**Activation SP is NO switching function.

Confirm with **“OK ▶”**.



FURTHER STEPS



Further programming steps depend on the choice of the **switching function** (Step 4). Follow further advices within window **“new switching time”**.



A **SP** will only be applied after **Activation** (call up by date)
 ▶ see **point 5.2.1.**

5.2.1. Activation of a special program (yearly time switch)

Special programs will only be applied if activated (called up) by date. SP can be called up as often as required (limited only by the max. quantity of memory locations). The activation requires start date and end date of the date period.



STEP 1



Click **“New switching time”**.

OR



Double click an empty line within the table.



Window **„new switching time”** opens!



STEP 2



Choose the channel(s) for which you would like to activate a special program.



Confirm with **“OK ▶”**.



STEP 3



Choose the **SP (SP 1 – SP 10)** to be activated.



Confirm with **“OK ▶”**.



STEP 4



Choose **“Activate SP”** as switching function.



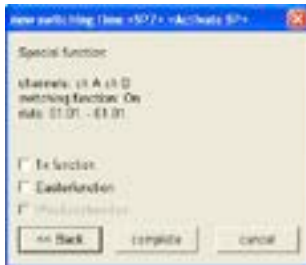
Confirm with **“OK ▶”**.

**STEP 5**

Enter **“start date”** and **“end date”** of your special program.



Confirm with **“OK ▶”**.

**STEP 6**

A **„Special function”** can be activated optionally (standard is **NO** special function).



Confirm with **“OK ▶”**.

5.3. Add-Ons



The following functions are **NOT** included in all types of time switches!

5.3.1. Extra switching time

Extra switching time is one single additional switching time that can be programmed by date. This switching time is executed additionally to the active switching program. If you like to program an extra switching time choose **“EXTRA”** as program type.

5.3.2. Permanent program

The program type permanent (permanent by date, holiday program) is a permanent On or Off status for the desired channel and activated by date (start date till end date). A permanent switching program can be called up as often as required (limited only by the max. quantity of memory locations).

If you like to program an extra switching time choose **“PERMANENT”** as program type.

6. Data key functions

INFO For a successful data transfer the time switch and the type of time switch of the PC project must be identical!

6.1. Read data key



STEP 1

Click symbol **“read data key”**.

INFO Window **“LU-TS-ACC-DS2”** opens if project is empty!



STEP 2

Click **“read data key”**.

INFO Data is now read from the data key!



STEP 3

Confirm with **“OK ▶”**.

INFO All switching times will be shown on the screen of the PC!

6.2. Write data key



STEP 1

Click symbol **“read data key”**.

INFO Window **“LU-TS-ACC-DS2”** opens!

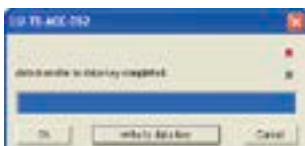


STEP 2

Click **“write to data key”**.

INFO Data is now written to the data key!

INFO Existing data on the data key will be lost!



STEP 3

Confirm with **“OK ▶”**.

INFO All switching times which are marked for transfer are written to the data key and can be copied to the time switch of the same type.

INFO **If you do so, the existing switching program of the time switch will be overwritten!**

7. Further information

7.1. Refreshing the chart

While working with the chart view and if you enter a new switching time you have to refresh the chart before you see the switching time in the diagram.



Refresh chart



Click **“Refresh chart”** symbol.



New switching steps will only be shown after refreshing the chart.



The more memory locations you use, the longer it takes to refresh/show the chart.
This can take up to 1 minute!

7.2. Duplication

Standard switching times **“ON/OFF”**, **“PULSE”** or **“CYCLE”** can quickly and easily be duplicated.



STEP 1



Click symbol **“duplicate”**.



Window **“LU-TS-ACC-DS2”** opens!



STEP 2



This offset value is added to the switching time chosen for copy.



Confirm with **“OK ▶”**.



7.3. Cycle function

The cycle is not offered as switching function until you have defined a cycle. You have to define the cycle you would like to use first as follows:

7.3.1. Cycle activation and definition



STEP 1



Click symbol **“cycle-settings”**.



Window **“cycle-settings”** opens!



STEP 2

Up to four different cycles can be activated and defined within this window.



Activate the desired **cycle** number (click).



STEP 3

The max. **pulse** and **pause** length is 9:59:59 (h:mm:ss) each.

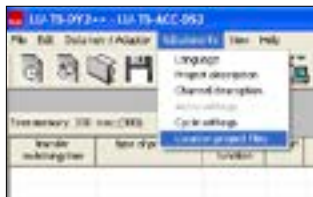


Define **Pulse** and **Pause** length.



Confirm with **“OK ▶”**.

7.3.2. Saving / Location project files



Location of project files



Click **“Adjustments”**.



Click submenu **“Location project files”**.



Define a project directory.

Article / Part-Nr. / Accessory

Digital time switches with data key function (accessory)	Part-Nr.
LUXOMAT® weekly time switch TS-DW2	92658
LUXOMAT® weekly time switch TS-DW3	92659
LUXOMAT® weekly time switch with Astro function TS-ASTRO2	92671
LUXOMAT® weekly time switch with Astro function TS-ASTRO3	92673
LUXOMAT® Yearly time switch TS-DY1	92674
LUXOMAT® Yearly time switch TS-DY2	92675
Data key LUXOMAT® TS-ACC-DS1	92684
PC-Programming package with USB connection LUXOMAT® TS-ACC-DS2	92685

