

Ceiling-mounted motion detectors - 1-channel

PD9-DIGI



- , Art.-Nr.: 92917

Product Information

- Mini-motion detector designed for installation in luminaires
- One channel for light switching
- Switching solely depends on motion
- Manual setting of follow-up time via power supply
- Visible portion of sensor head: Ø 11 x 3 mm
- **Typical applications:**
for installation in fitted downlights

Technical Data

Voltage:	230 V AC ±10% 50 / 60 Hz
Dimensions:	Sensor head: Ø 18 x 26 mm, Power supply: 154 x 40 x 30 mm
Power consumption:	approx. 1,6 W
Detection area:	horizontal 360° (Ceiling mounting)
Range:	max. Ø 3 m across
Monitored area (tangential movement):	7 m ² / 2,5 m mounting height
Mounting height min./max./recommended:	2 m / 3 m / 2,5 m
Degree / class of protection:	IP20 / Class II

Ambient temperature: -25 °C to +50 °C

Housing: Polycarbonate, UV-resistant

Cable length: 45 cm

Channel 1 (lighting control, potential-free (dry))

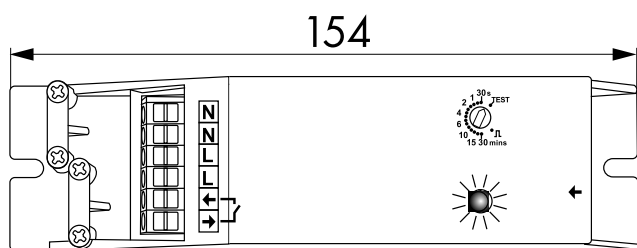
Switching power: 1000 W, $\cos \varphi = 1$
500 VA, $\cos \varphi = 0,5$
200 W LED

Type of contact: 1x μ -contact, dry NO contact with tungsten pre-make contact

Follow-up time: 30 sec - 30 min, Pulse

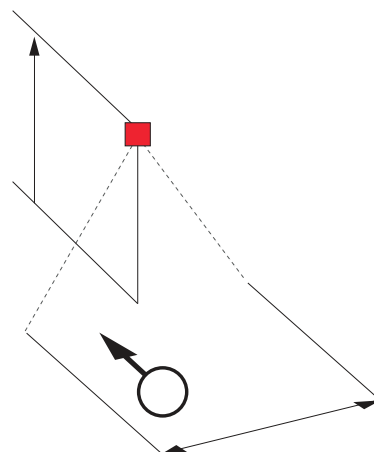
Description

Description	Colour	Part number	EAN number
PD9-DIGI	-	92917	4007529929177

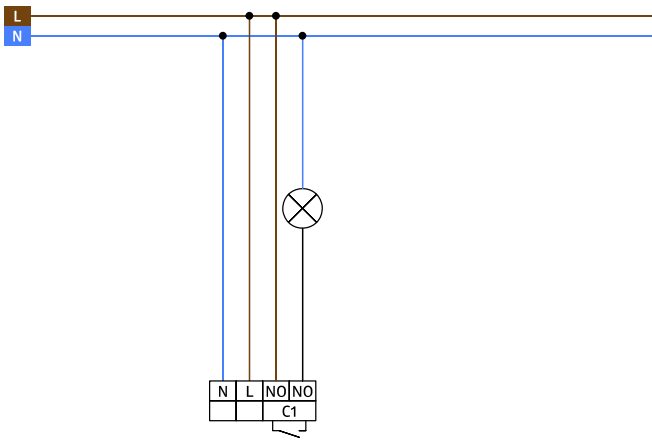


154 x 40 x 30 mm

Dimensions 92917



Range diagramm



Wiring diagramms

© 2020 B.E.G. Brück Electronic GmbH